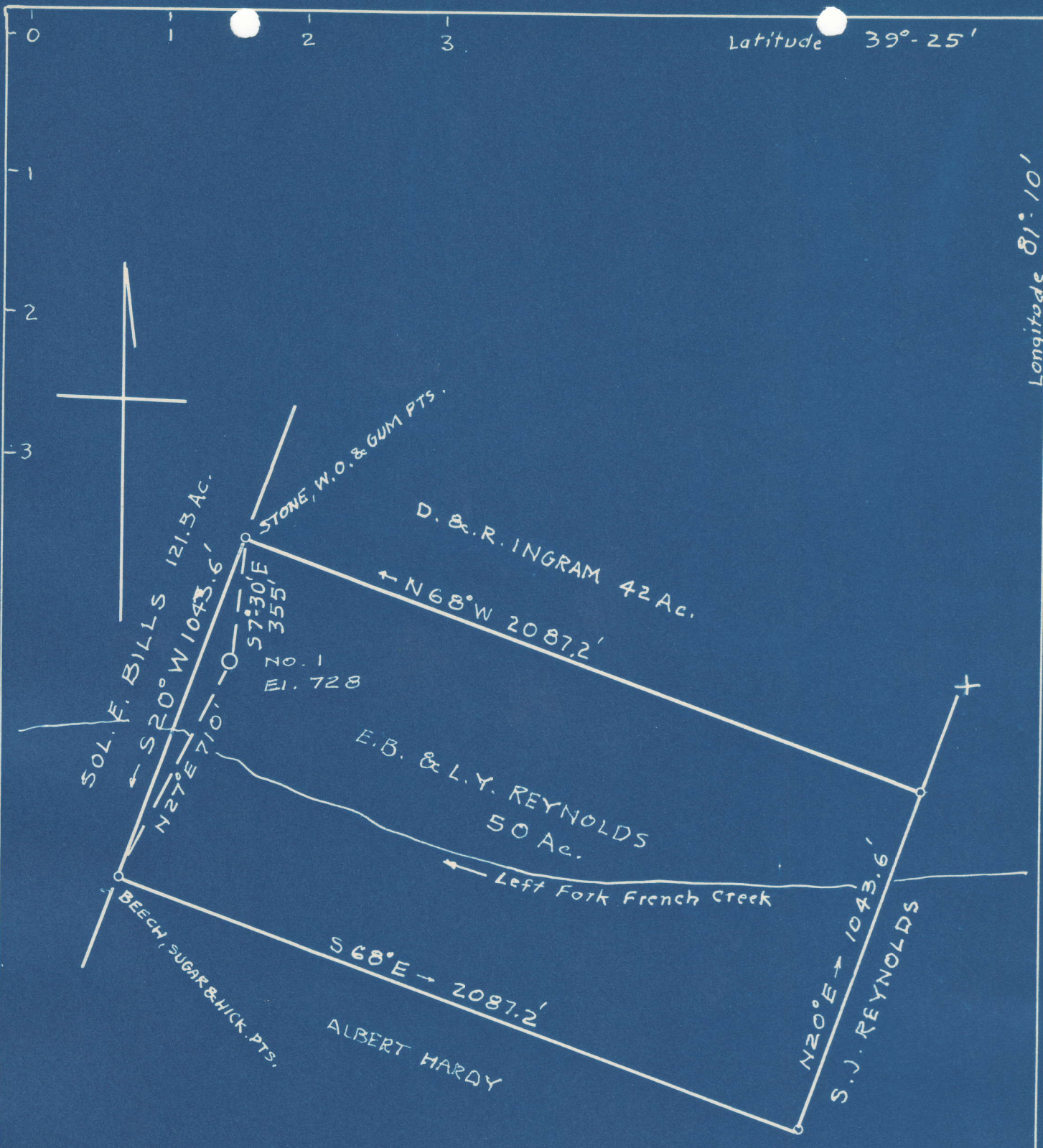


Latitude 39°-25'

Longitude 81°-10'



4.81 S  
0.53 W

Abandonment

COMPANY: Dinsmoor & Co.  
 ADDRESS: St. Marys, W. Va.  
 FARM: E.B. & L.R. Reynolds  
 TRACT: ACRES: 50 LEASE NO.  
 WELL NO. 1 SERIAL NO.  
 ELEVATION: 728  
 QUADRANGLE: St. Marys  
 COUNTY: Pleasants DISTRICT: McKim  
 ENGINEER: George R. Clarke  
 ENGINEER'S NO. 102  
 FILE NO. DRAWING NO.  
 DATE: 3-17-49 SCALE: 1" = 400'

WC

WELL ABANDONMENT MAP  
FILE NO. PLEAS-314-A