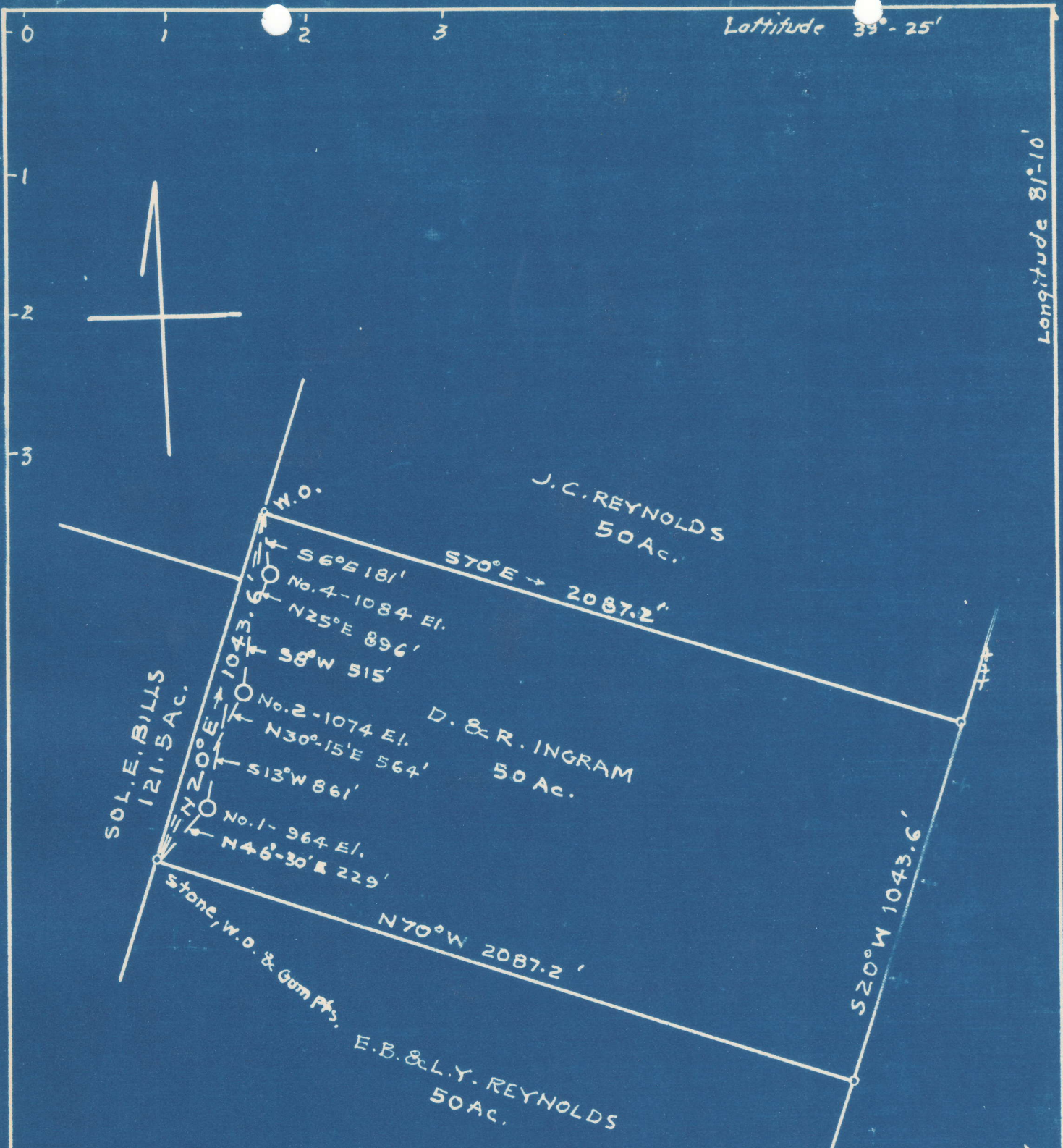


Latitude 39°-25'

Longitude 81°-10'



#1	4.81 S	0.53 W
#2	4.75 S	0.52 W
#4	4.63 S	0.51 W

Abandonment

COMPANY: Dinsmoor & Co.
 ADDRESS: St. Marys, W. Va.
 FARM: D. & R. Ingram
 TRACT: ACRES: 50 LEASE NO.
 WELL NO. 1; 2; 4 SERIAL NO.
 ELEVATION: 964; 1074; 1084
 QUADRANGLE: St. Marys
 COUNTY: Pleasants DISTRICT: McKim
 ENGINEER: George R. Clarke
 ENGINEER'S NO. 102
 FILE NO. DRAWING NO.
 DATE: 4-13-49 SCALE: 1"=400'

WC

WELL ABANDONMENT MAP
 PLEAS-329-A-#1
 PLEAS-330-A-#2
 PLEAS-331-A-#4