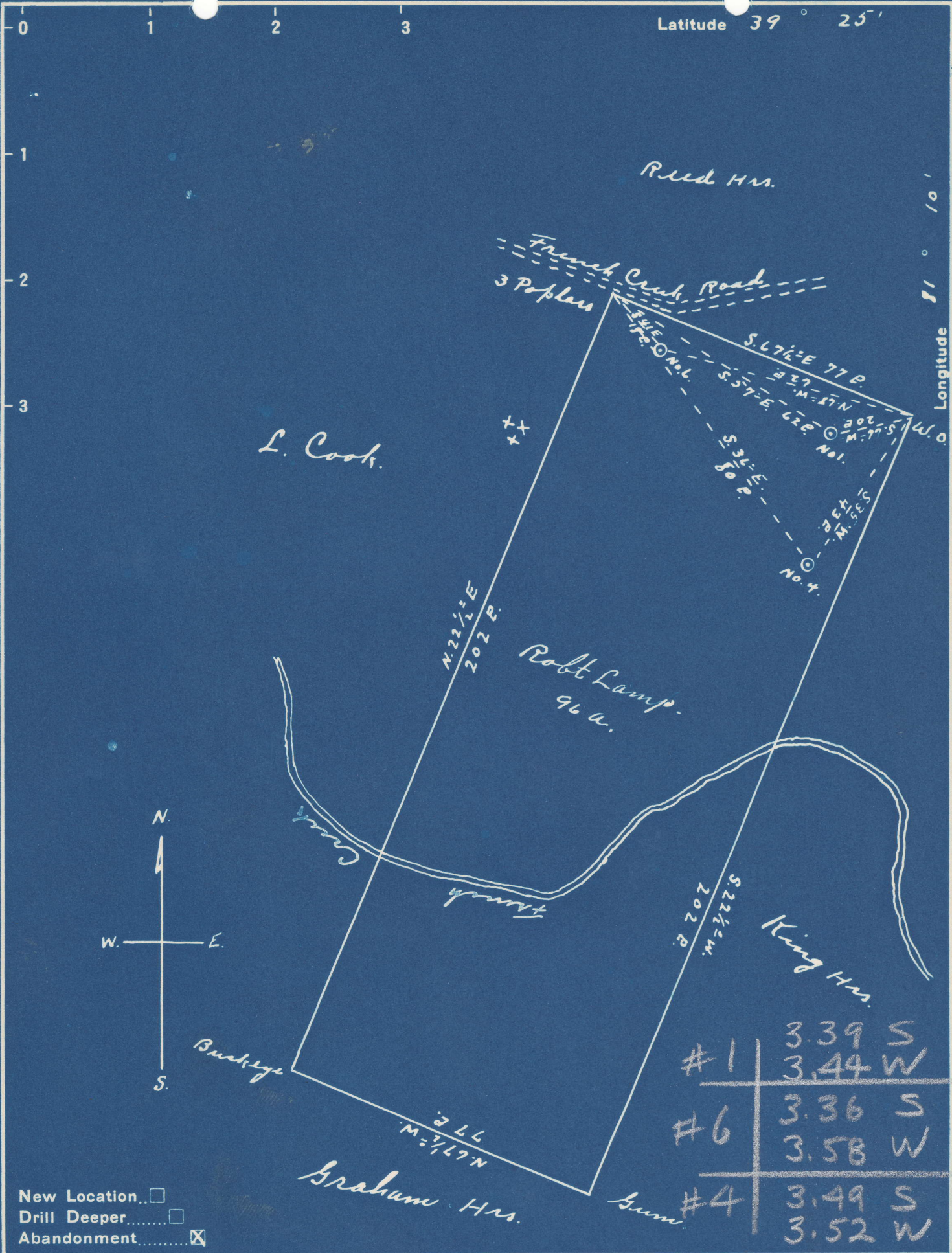


Latitude 39° 25'



New Location...   
 Drill Deeper...   
 Abandonment...

Company G. A. Clovis  
 Address St. Marys W.Va.  
 Farm Robt. Lamp.  
 Tract \_\_\_\_\_ Acres 96 Lease No. \_\_\_\_\_  
 Well (Farm) No. 1, 4 & 6. Serial No. \_\_\_\_\_  
 Elevation (Spirit Level) No. 1. 810' No. 4 780' No. 6. 610'  
 Quadrangle St. Marys  
 County Pleasants District Washington  
 Engineer Robert R. Anderson  
By Geo. Triplett, Surveyor.  
 Engineer's Registration No. \_\_\_\_\_  
 File No. \_\_\_\_\_ Drawing No. 296  
 Date July 12 1948 Scale 1" = 30 P.

STATE OF WEST VIRGINIA  
 DEPARTMENT OF MINES  
 OIL AND GAS DIVISION  
 CHARLESTON

WELL LOCATION MAP  
 FILE NO. PLEAS-334-A-#1

+ Denotes location of well on United States Topographic Maps, scale 1 to 62,500, latitude and longitude lines being represented by border lines as shown.

- Denotes one inch spaces on border line of original tracing.