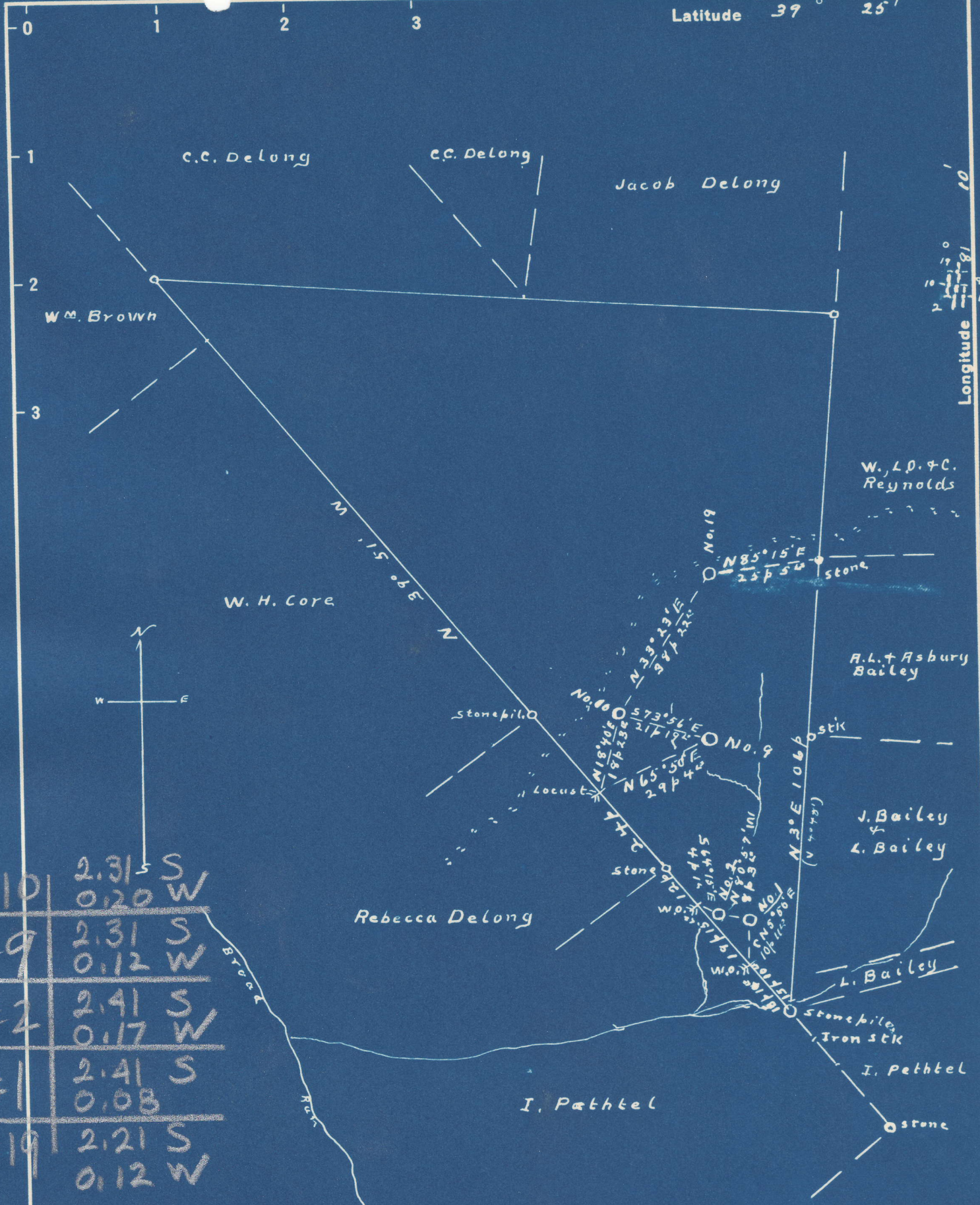


Latitude 39° 25'



#10	2.31 S	0.20 W
#9	2.31 S	0.12 W
#2	2.41 S	0.17 W
#1	2.41 S	0.08
#19	2.21 S	0.12 W

New Location
 Drill Deeper
 Abandonment

Note: - Graded for mud sill at No. 19 well from previous Elevation Approx' 2.5'

Company J. R. Bull
 Address Sistersville, W. Va. WC
 Farm Stephen Delong
 Tract 1 Acres 80 Lease No. 530-89
 Well (Farm) No. 1, 2, 9, 10, 19 Serial No. _____
 Elevation (Spirit Level) No. 1-869.25 No. 9-900.7' No. 19-1043.16'
 Quadrangle St. Marys
 County Pleasants District Washington
 Engineer Don L. Riggle
 Engineer's Registration No. _____
 File No. 046-S.P. 11 Drawing No. 1768
 Date April 13/13, '48 Scale 1" = 30'

STATE OF WEST VIRGINIA
 DEPARTMENT OF MINES
 OIL AND GAS DIVISION
 CHARLESTON

WELL LOCATION MAP
 FILE NO. PLEAS-344-A-#10
PLEAS-345-A-#9
PLEAS-347-A PLEAS-346-A-#2
#1

+ Denotes location of well on United States Topographic Maps, scale 1 to 62,500, latitude and longitude lines being represented by border lines as shown.
 - Denotes one inch spaces on border line of original tracing.