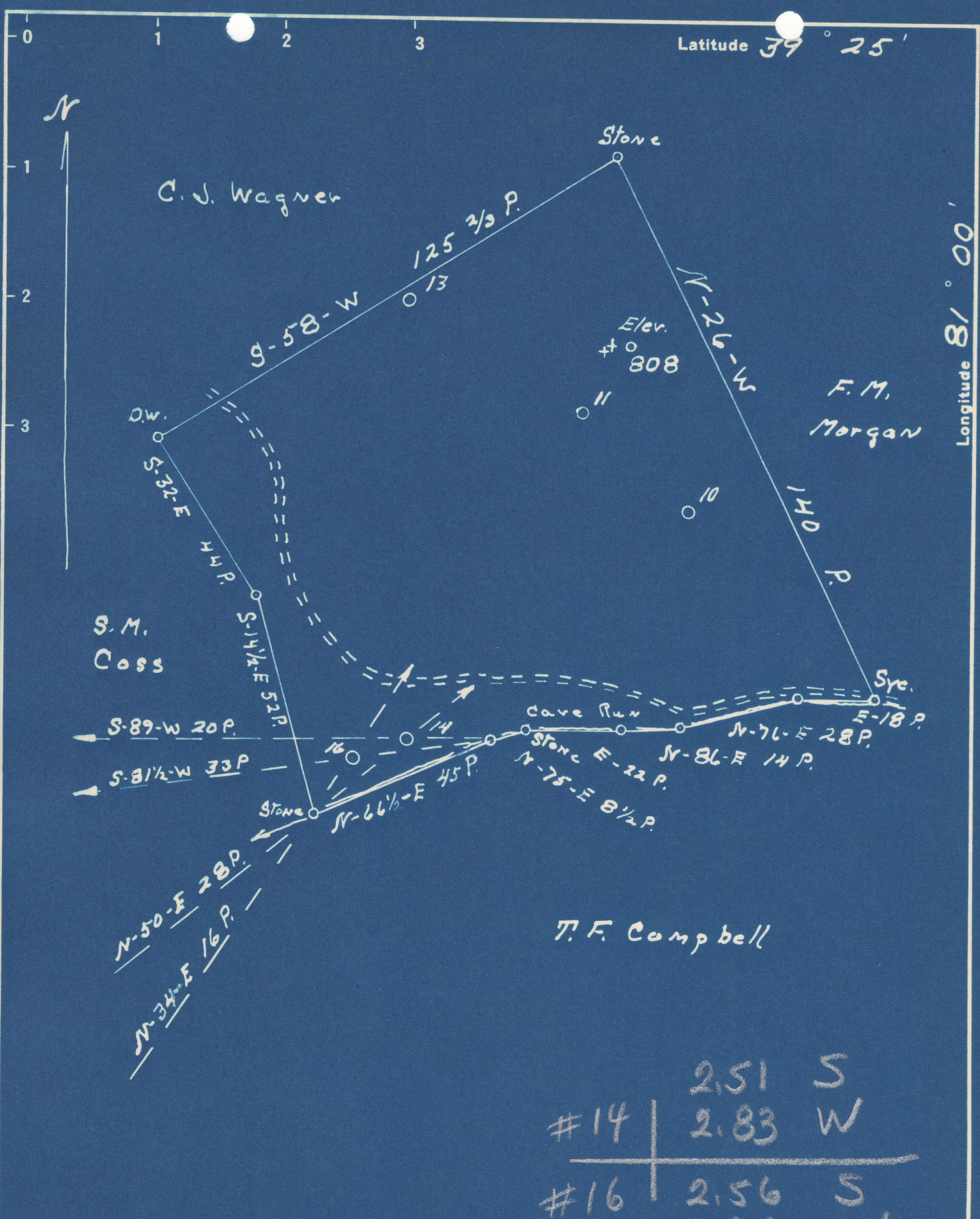


Latitude 39° 25'

Longitude 81° 00'



T. F. Campbell

#14	2.51	S
	2.83	W
#16	2.56	S
	2.89	W

New Location...   
 Drill Deeper...   
 Abandonment...

Company American Oil Development Co.  
 Address Sistersville W. Va.  
 Farm J. T. Coss  
 Tract \_\_\_\_\_ Acres 88 Lease No. EC  
 Well (Farm) No. 14 & 16 Serial No. \_\_\_\_\_  
 Elevation (Spirit Level) 14-819.00 16-807.00  
 Quadrangle St. Marys  
 County Pleasants District Lafayette  
 Engineer J. S. Haught  
 Engineer's Registration No. County Surveyor Tyler County  
 File No. \_\_\_\_\_ Drawing No. \_\_\_\_\_  
 Date 7-25-49 Scale 30nds = 1"

STATE OF WEST VIRGINIA  
 DEPARTMENT OF MINES  
 OIL AND GAS DIVISION  
 CHARLESTON

WELL LOCATION MAP  
 FILE NO. PLEAS-357-A-#14  
PLEAS-358-A-#16

+ Denotes location of well on United States Topographic Maps, scale 1 to 62,500, latitude and longitude lines being represented by border lines as shown.  
 - Denotes one inch spaces on border line of original tracing.