



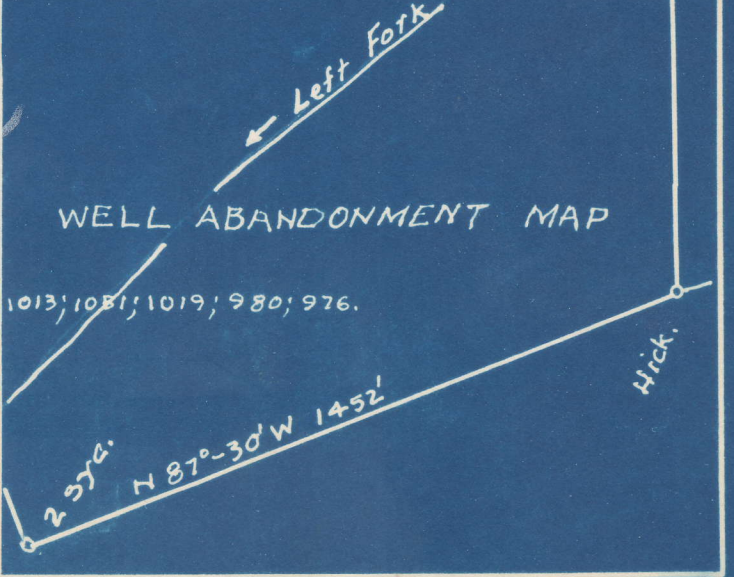
- PLCA-361-A - #7
- PLCA-362-A - #11
- PLEAS-363-A - #13
- PLEAS-364-A - #15
- PLEAS-365-A - #17
- PLEAS-366-A - #18
- PLEAS-367-A - #21
- PLEAS-368-A - #24
- PLEAS-369-A - #25
- PLEAS-370-A - #29
- PLEAS-371-A - #32
- PLEAS-372-A - #42
- PLEAS-373-A - #43
- PLEAS-374-A - #44
- PLEAS-375-A - #45
- PLEAS-376-A - #48
- PLEAS-377-A - #49
- PLEAS-378-A - #50

361-A	S	3.85
#7	W	1.73
362-A	S	3.90
#11	W	1.170
363-A	S	3.61
#13	W	1.56
364-A	S	4.90
#15	W	1.70
365-A	S	4.89
#17	W	1.82

366-A	S	5.05
#18	W	1.81
367-A	S	4.71
#21	W	1.95
368-A	S	4.82
#24	W	1.96
369-A	S	4.20
#25	W	1.69

370-A	S	5.27
#29	W	1.90
371-A	S	5.19
#32	W	1.78
372-A	S	4.05
#42	W	1.86

COMPANY: Dinsmoor & Co.
 ADDRESS: St. Marys, W. Va.
 FARM: Sol. Pethtel
 TRACT: ACRES: 153 LEASE NO.
 WELL NO. 7; 11; 13; 15; 17; 18; 21; 24; 25; 29; 32; 42; 43;
 44; 45; 48; 49; 50.
 ELEVATION: 1042; 904; 996; 981; 990; 983;
 1059; 1024; 793; 792; 684; 1066;
 QUADRANGLE: St. Marys
 COUNTY: Pleasants DISTRICT: McKim
 ENGINEER: George R. Labadie
 ENGINEERS NO. 102
 FILE NO. DRAWING NO.
 DATE: 4-15-49 SCALE: 1" = 400'



WELL ABANDONMENT MAP