

Latitude 39° 25'

Longitude 81° 10'

388-A	S 4.17
#14	W 0.87
389-A	S 4.27
#39	W 0.86

M.E. Bachman Hrs.

Stone 570°E 600' Loc.

390-A	S 4.30
#40	W 0.99
391-A	S 4.36
#6	W 0.76

Stone 407°30'E 293'

394-A	S 4.56
#1	W 0.77

400-A	S 4.44
#2	W 0.84

401-A	S 4.47
#3	W 0.66

402-A	S 4.42
#23	W 1.08

PLEAS-388-A #14
 PLEAS-389-A #39
 PLEAS-390-A #40
 PLEAS-391-A #6
 PLEAS-399-A #1
 PLEAS-400-A #2
 PLEAS-401-A #3
 PLEAS-402-A #23
 PLEAS-403-A #33

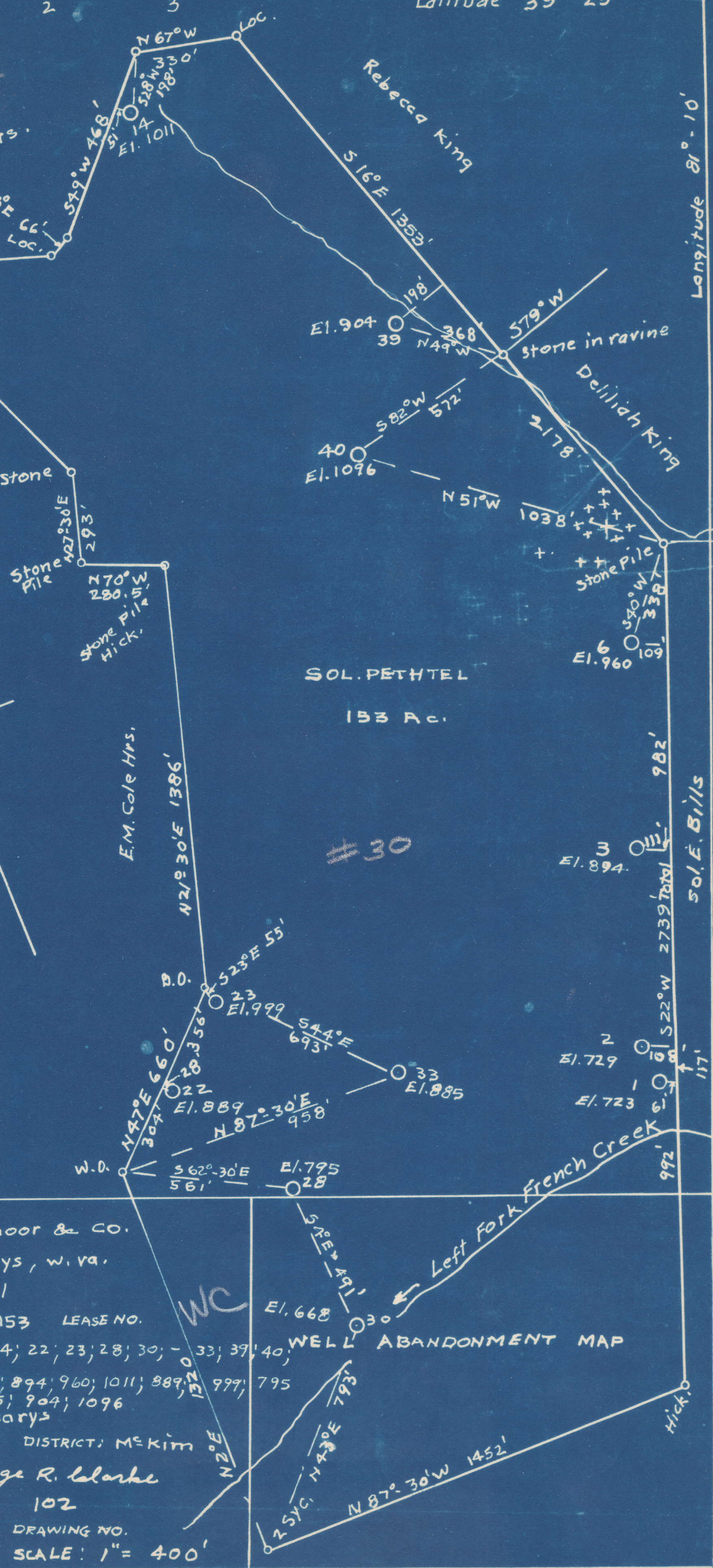
403-A	S 4.51
#33	W 1.00

#22

#28

ABANDONMENT

COMPANY: Dinsmoor & CO.
 ADDRESS: St. Marys, W. Va.
 FARM: Sol. Pethtel
 TRACT: ACRES: 153 LEASE NO. WC
 WELL NO. 1; 2; 3; 6; 14; 22; 23; 28; 30; - 33; 39; 40;
 ELEVATION: 723; 729; 894; 960; 1011; 889; 999; 795
 668; 885; 904; 1096
 QUADRANGLE: St. Marys
 COUNTY: Pleasants DISTRICT: McKim
 ENGINEER: George R. Clarke
 ENGINEER'S NO. 102
 FILE NO. DRAWING NO.
 DATE: 9-1-50 SCALE: 1" = 400'



SOL. PETHTEL
153 Ac.

#30

WELL ABANDONMENT MAP