

Latitude 39° 25'

Longitude 81° 10'

388-A	S 4.17
#14	W 0.87
389-A	S 4.27
#39	W 0.86

M.E. Bachman Hrs.

390-A	S 4.30
#40	W 0.99
391-A	S 4.36
#6	W 0.76
394-A	S 4.56
#1	W 0.77

400-A	S 4.44
#2	W 0.84
401-A	S 4.47
#3	W 0.66

402-A	S 4.42
#23	W 1.08

403-A	S 4.51
#33	W 1.00

PLEAS-388-A #14  
 PLEAS-389-A #39  
 PLEAS-390-A #40  
 PLEAS-391-A #6  
 PLEAS-394-A #1  
 PLEAS-400-A #2  
 PLEAS-401-A #3  
 PLEAS-402-A #23  
 PLEAS-403-A #33

#22	
#28	

ABANDONMENT

COMPANY: Dinsmoor & CO.  
ADDRESS: St. Marys, W. Va.

FARM: Sol. Pethtel

TRACT: ACRES: 153 LEASE NO.

WELL NO. 1; 2; 3; 6; 14; 22; 23; 28; 30; - 33; 39; 40;

ELEVATION: 723; 729; 894; 960; 1011; 889; 999; 795  
668; 885; 904; 1096

QUADRANGLE: St. Marys

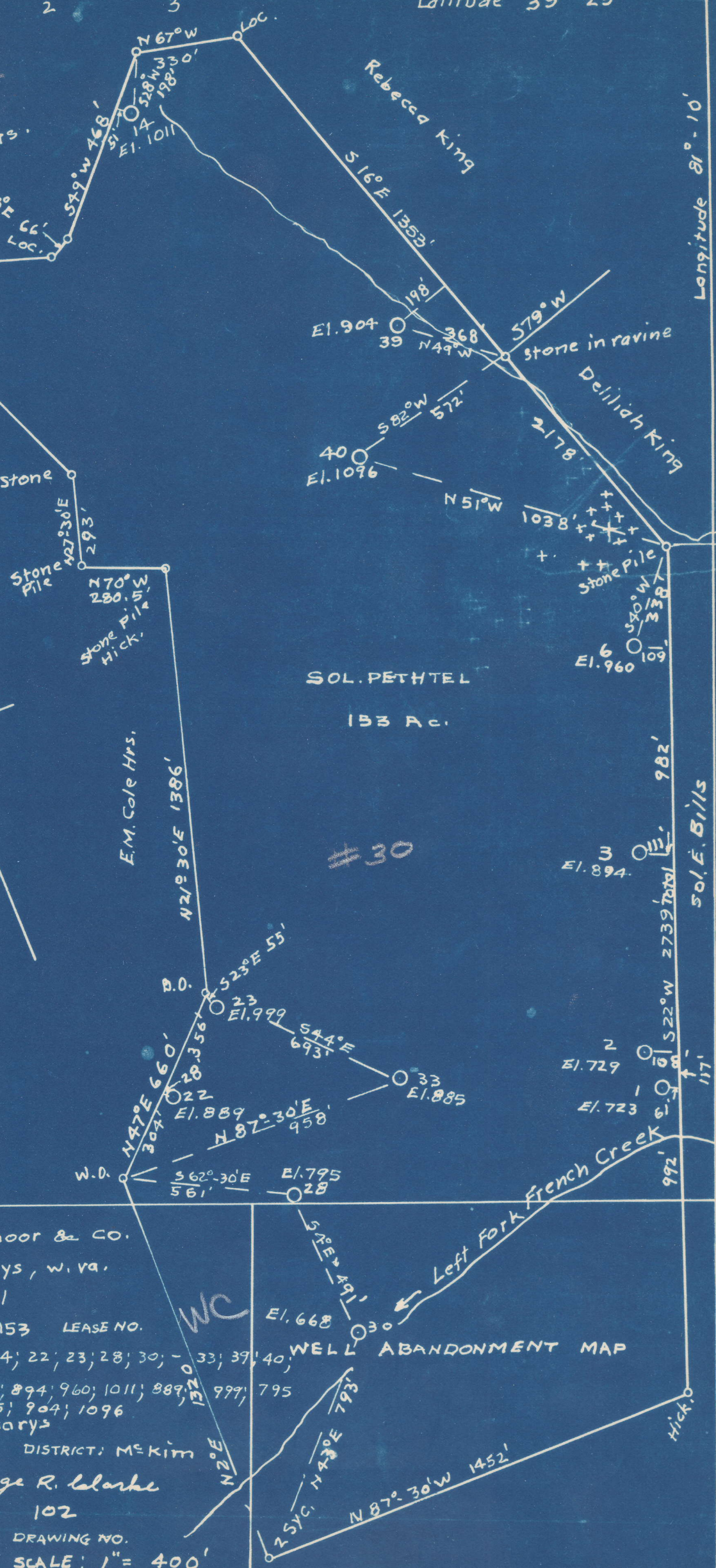
COUNTY: Pleasants DISTRICT: McKim

ENGINEER: George R. Clarke

ENGINEER'S NO. 102

FILE NO. DRAWING NO.

DATE: 9-1-50 SCALE: 1" = 400'



WELL ABANDONMENT MAP