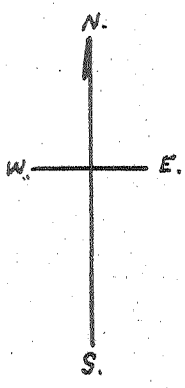
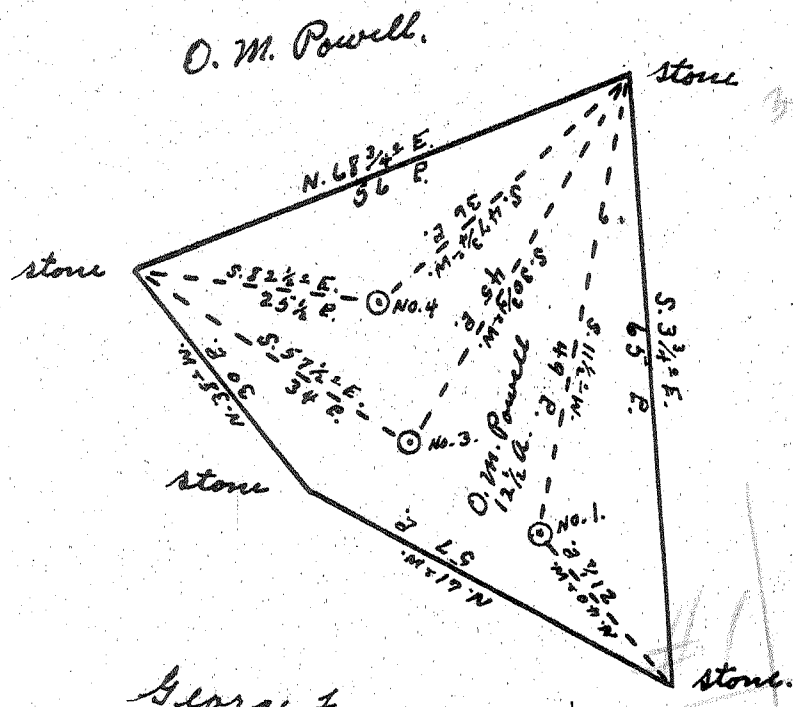


Latitude 39° 25'

Longitude 81° 15'



0.6 W
 1.53
 0.68 W
 1.52
 0.6 W
 1.42

PLEAS-595-A-#1
 PLEAS-596-A-#3
 PLEAS-597-A-#4

New Location..
 Drill Deeper.....
 Abandonment.....

1953

Company Dinsmoor & Company
 Address St. Marys, W. Va.
 Farm O. M. Powell
 Tract _____ Acres 12 1/2 Lease No. _____
 Well (Farm) No. 1, 3 & 4 Serial No. _____
 Elevation (Spirit Level) No. 1, 820' No. 3, 940' No. 4, 870'
 Quadrangle Marietta
 County Pleasants District Jefferson
 Engineer Robert R. Anderson
By Jno. Triplett, Surveyor
 Engineer's Registration No. 296
 File No. _____ Drawing No. _____
 Date Oct. 30 1953 Scale 1" = 20 P.

STATE OF WEST VIRGINIA
 DEPARTMENT OF MINES
 OIL AND GAS DIVISION
 CHARLESTON

WELL LOCATION MAP
 FILE NO. See Above

+ Denotes location of well on United States Topographic Maps, scale 1 to 62,500, latitude and longitude lines being represented by border lines as shown.

- Denotes one inch spaces on border line of original tracing.

O. M. POWELL NOS. 1, 3 & 4 - DINSMOOR & CO. - PLEAS-595-6-7-A