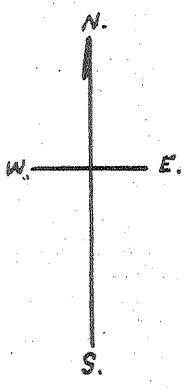
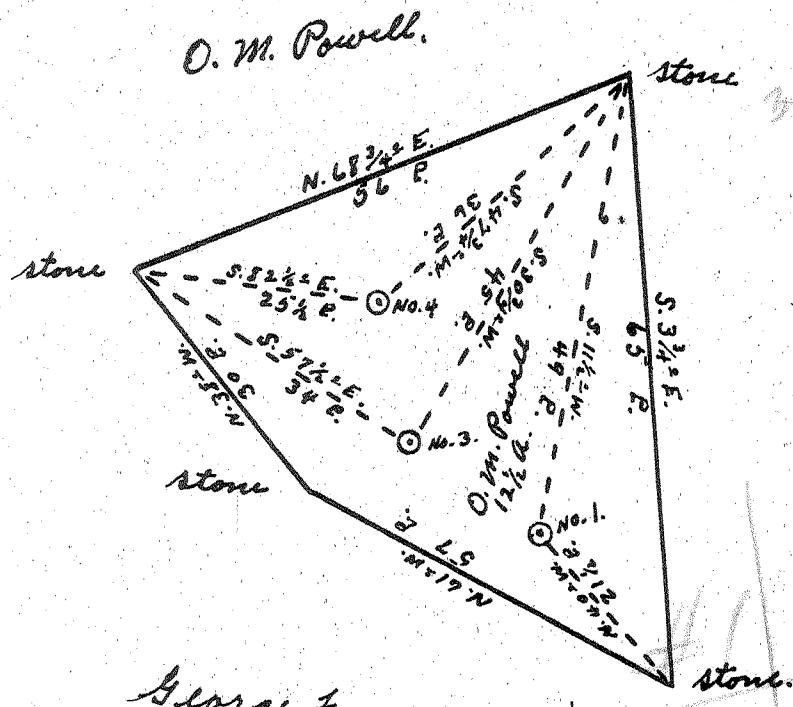


Latitude 39° 25'

Longitude 81° 15'



T. H. Feeney

0.6 W  
 1.53  
 0.68 W  
 1.5  
 0.6 W  
 1.42

PLEAS-595-A-#1  
 PLEAS-596-A-#3  
 PLEAS-597-A-#4

New Location...   
 Drill Deeper.....   
 Abandonment.....

Company Dinsmoor & Company  
 Address St. Marys, W. Va.  
 Farm O. M. Powell  
 Tract \_\_\_\_\_ Acres 12 1/2 Lease No. \_\_\_\_\_  
 Well (Farm) No. 1, 3 & 4 Serial No. \_\_\_\_\_  
 Elevation (Spirit Level) No. 1, 820' No. 3, 946' No. 4, 870'  
 Quadrangle Marietta  
 County Pleasants District Jefferson  
 Engineer Robert R. Anderson  
By Jno. Triplett, Surveyor  
 Engineer's Registration No. 296  
 File No. \_\_\_\_\_ Drawing No. \_\_\_\_\_  
 Date Oct. 30 1953 Scale 1" = 20 P.

STATE OF WEST VIRGINIA  
 DEPARTMENT OF MINES  
 OIL AND GAS DIVISION  
 CHARLESTON

WELL LOCATION MAP  
 FILE NO. See Above

+ Denotes location of well on United States Topographic Maps, scale 1 to 62,500, latitude and longitude lines being represented by border lines as shown.

-- Denotes one inch spaces on border line of original tracing.

O. M. POWELL NOS. 1, 3 & 4 - DINSMOOR & CO. - PLEAS-595-6-7-4