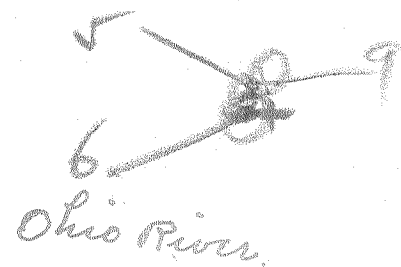
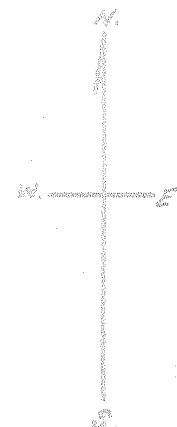
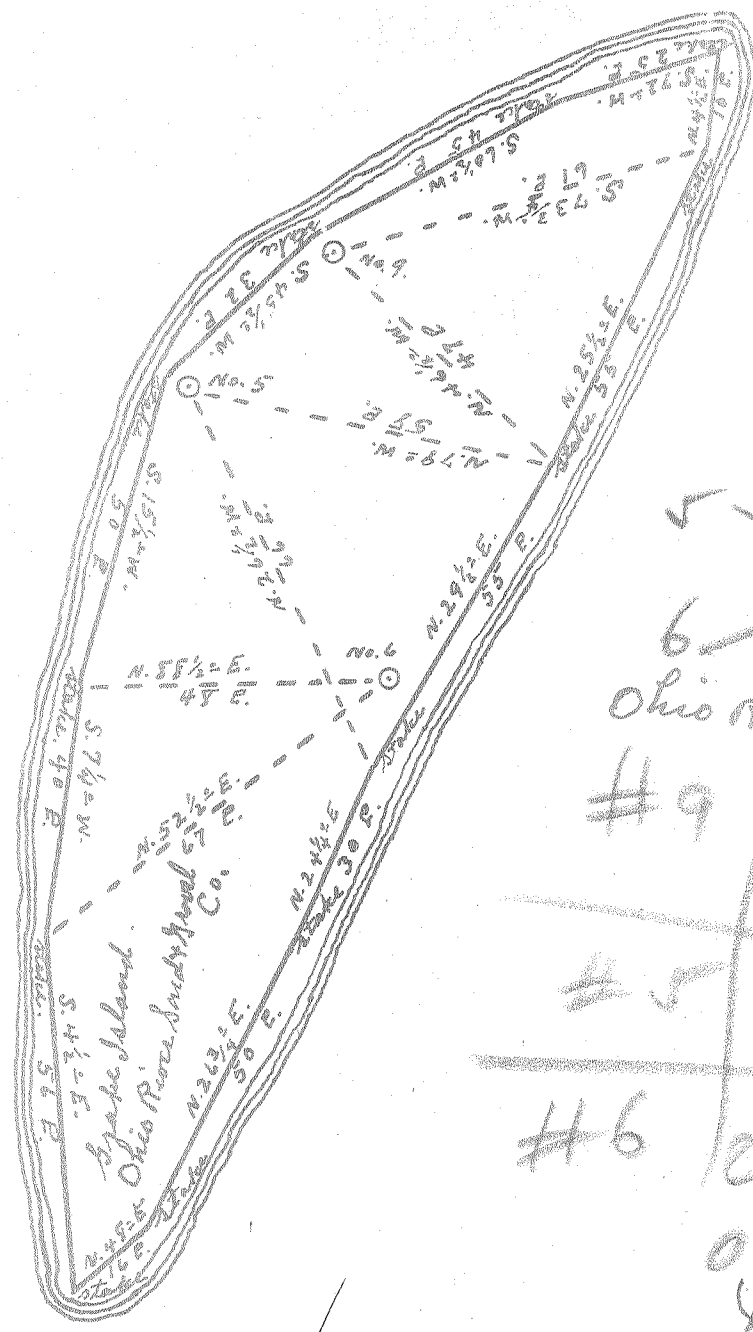


Latitude 39° 30'

Longitude 81° 10'

Ohio River



#9	0.8 W
	4.75
#5	0.8 W
	4.8
#6	0.8 W
	0.76
	4.9

PLEAS-655-A-#5  
 PLEAS-656-A-#6  
 PLEAS-659-A-#9

Ohio River

New Location   
 Drill Deeper   
 Abandonment

OCT 11 1954

Company D. C. Payne  
 Address St. Marys, W. Va.  
 Farm Ohio River Sand & Gravel Co.  
 Tract \_\_\_\_\_ Acres 40 Lease No. \_\_\_\_\_  
 Well (Farm) No. 5, 6, & 9 Serial No. \_\_\_\_\_  
 Elevation (Spirit Level) No. 5, 6, No. 6, & No. 9, 102  
 Quadrangle St. Marys  
 County Pleasants District Union  
 Engineer Robert R. Anderson  
 Engineer's Registration No. \_\_\_\_\_  
 File No. 134 Jno Triplett, Surv. Drawing No. 296  
 Date Sept 15, 1954 Scale 1" = 30 P.

STATE OF WEST VIRGINIA  
 DEPARTMENT OF MINES  
 OIL AND GAS DIVISION  
 CHARLESTON

WELL LOCATION MAP  
 FILE NO. See Above

+ Denotes location of well on United States Topographic Maps, scale 1 to 62,500, latitude and longitude lines being represented by border lines as shown.  
 - Denotes one inch spaces on border line of original tracing.

OHIO RIVER SAND & GRAVEL CO. NO. 5, 6, & 9 - D. C. PAYNE - 655-6, 659-A