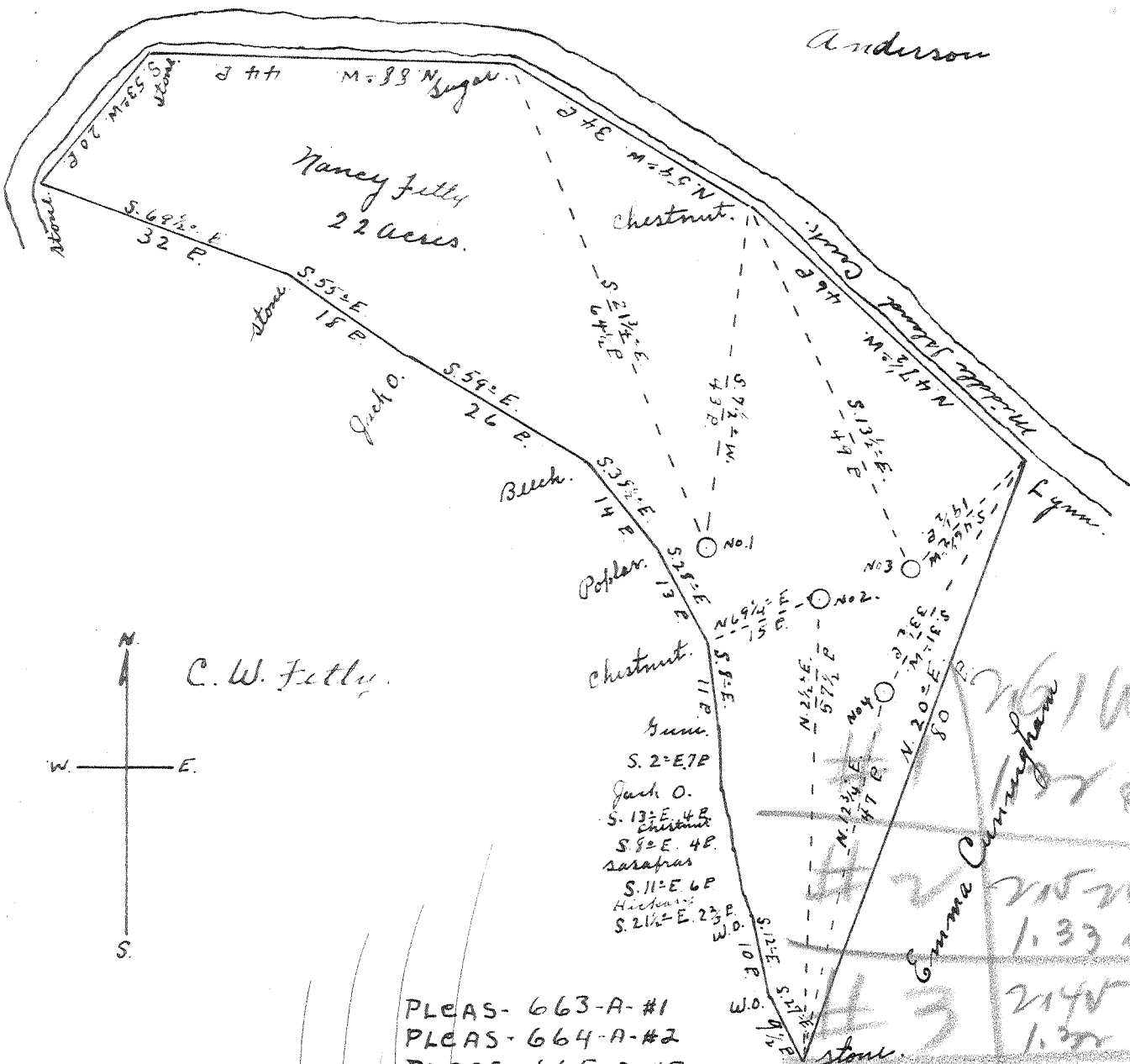


Latitude 39° 25'

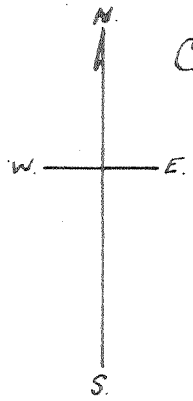
Longitude 81° 05'

G. P. Riggs

Anderson



C. W. Fetty



- PLEAS-663-A-#1
- PLEAS-664-A-#2
- PLEAS-665-A-#3
- PLEAS-666-A-#4

NOV 8 1954

- New Location...
- Drill Deeper.....
- Abandonment.....

#1	215	200
#2	215	200
#3	214	200
#4	214	200

Company Patterson & Zinn  
 Address Route 5 Marietta, Ohio  
 Farm Nancy Fetty  
 Tract \_\_\_\_\_ Acres 22 Lease No. \_\_\_\_\_  
 Well (Farm) No. 1, 2, 3, & 4 Serial No. \_\_\_\_\_  
 Elevation (Spirit Level) 1,940.2, 2,906.3, 800.4, 860.  
 Quadrangle St. Marys  
 County Pleasants District McKim  
 Engineer Robert R. Anderson  
134 Jno. Triplett, Surveyor  
 Engineer's Registration No. 286  
 File No. \_\_\_\_\_ Drawing No. \_\_\_\_\_  
 Date Sept. 25 1954 Scale 1" = 20 P.

STATE OF WEST VIRGINIA  
 DEPARTMENT OF MINES  
 OIL AND GAS DIVISION  
 CHARLESTON

**WELL LOCATION MAP**  
 FILE NO. See Above

+ Denotes location of well on United States Topographic Maps, scale 1 to 62,500, latitude and longitude lines being represented by border lines as shown.

- Denotes one inch spaces on border line of original tracing.