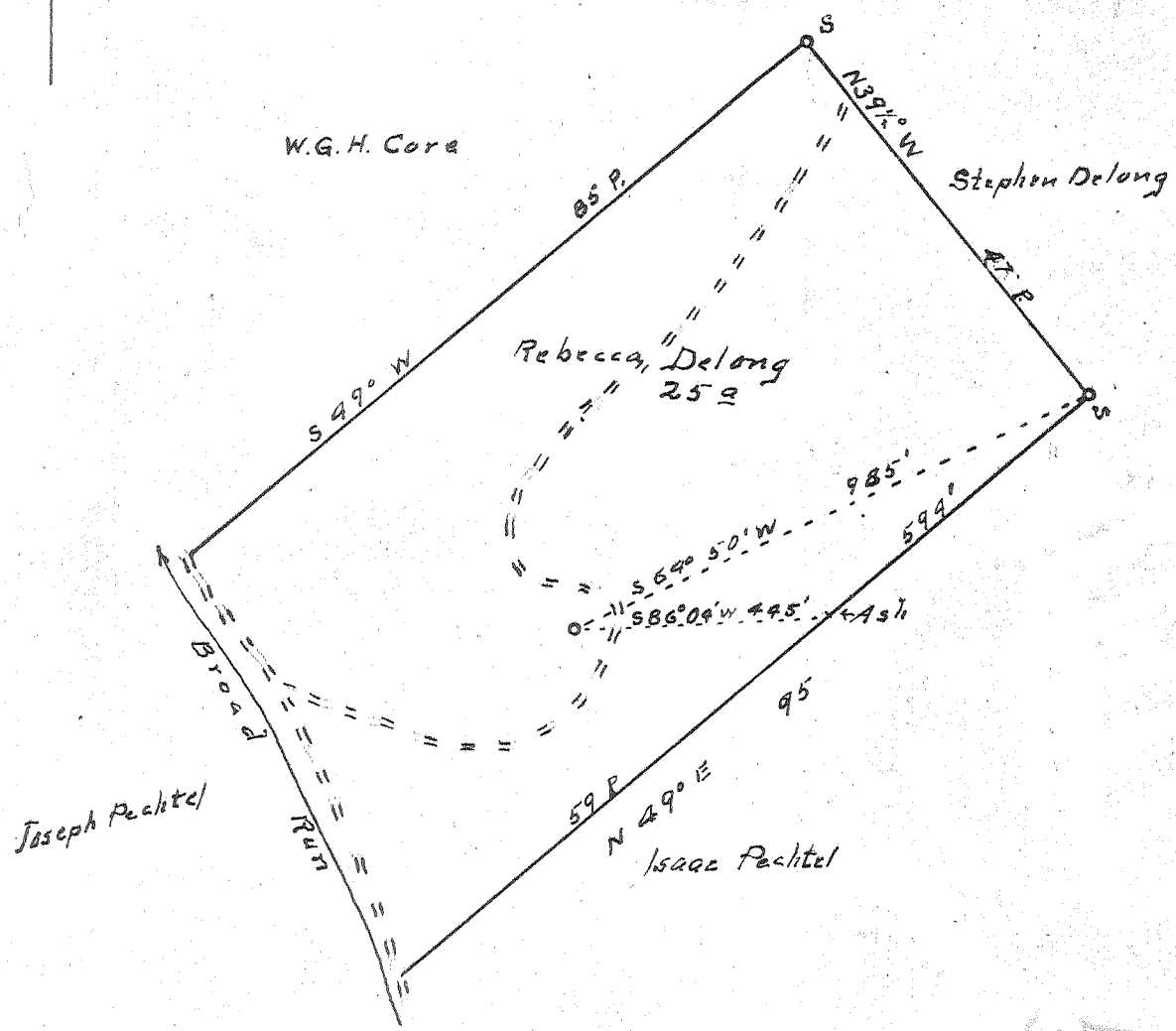


Latitude 39° 25'

Longitude 81° 10'



New Location...   
 Drill Deeper.....   
 Abandonment.....

AUG. 13 1956

0.37 W  
 2.48 P

Company Clyde McPeck  
 Address R1 Davisville, W.Va.  
 Farm Rebecca DeLong  
 Tract \_\_\_\_\_ Acres 25 Lease No. \_\_\_\_\_  
 Well (Farm) No. 6 Serial No. \_\_\_\_\_  
 Elevation (Spirit Level) 817  
 Quadrangle St. Marys  
 County Pleasants District Washington  
 Engineer Robert R. Anderson  
*By O. Meredith*  
 Engineer's Registration No. 296  
 File No. \_\_\_\_\_ Drawing No. \_\_\_\_\_  
 Date 7/7, 56 Scale 1/1" = 20 Poles

STATE OF WEST VIRGINIA  
 DEPARTMENT OF MINES  
 OIL AND GAS DIVISION  
 CHARLESTON

WELL LOCATION MAP  
 FILE NO. PLEAS-699-A

+ Denotes location of well on United States Topographic Maps, scale 1 to 62,500, latitude and longitude lines being represented by border lines as shown.

- Denotes one inch spaces on border line of original tracing.



STATE OF WEST VIRGINIA  
DEPARTMENT OF MINES  
OIL AND GAS DIVISION

197

WELL RECORD

Permit No. 699-4

Oil or Gas Well OIL  
(KIND)

Company CLYDE McPHEK  
 Address RT # 1, DAVISVILLE, W. VA  
 Farm REBECCA DELONG Acres 25  
 Location (waters) BROAD RUN  
 Well No. 6 Elev. 817'  
 District WASHINGTON County PLEASANTS  
 The surface of tract is owned in fee by REBECCA DELONG  
 Address UNKNOWN  
 Mineral rights are owned by UNKNOWN  
 Address \_\_\_\_\_  
 Drilling commenced UNKNOWN  
 Drilling completed \_\_\_\_\_  
 Date Shot \_\_\_\_\_ From \_\_\_\_\_ To \_\_\_\_\_  
 With \_\_\_\_\_  
 Open Flow \_\_\_\_\_ /10ths Water in \_\_\_\_\_ Inch  
 \_\_\_\_\_ /10ths Merc. in \_\_\_\_\_ Inch  
 Volume \_\_\_\_\_ Cu. Ft.  
 Rock Pressure \_\_\_\_\_ lbs. \_\_\_\_\_ hrs.  
 Oil \_\_\_\_\_ bbls., 1st 24 hrs.  
 Fresh water \_\_\_\_\_ feet \_\_\_\_\_ feet  
 Salt water \_\_\_\_\_ feet \_\_\_\_\_ feet

Casing and Tubing	Used in Drilling	Left in Well	Packers
Size			
16			Kind of Packer
13			
10			Size of
8 1/4	217'	217'	Depth set
6 5/8			
5 3/16 - 7/8"	680'	680'	Perf. top
3			Perf. bottom
2			Perf. top
Liners Used	None		Perf. bottom

CASING CEMENTED \_\_\_\_\_ SIZE \_\_\_\_\_ No. Ft. \_\_\_\_\_ Date \_\_\_\_\_  
 COAL WAS ENCOUNTERED AT No Coal FEET \_\_\_\_\_ INCHES  
 \_\_\_\_\_ FEET \_\_\_\_\_ INCHES FEET \_\_\_\_\_ INCHES  
 \_\_\_\_\_ FEET \_\_\_\_\_ INCHES FEET \_\_\_\_\_ INCHES

Formation	Color	Hard or Soft	Top	Bottom	Oil, Gas or Water	Depth Found	Remarks
			TOTAL DEPTH 706'				
			NO RECORD AVAILABLE EXCEPT SOUTH PENN PIPE RECORD				

9



OCT 26 1956

