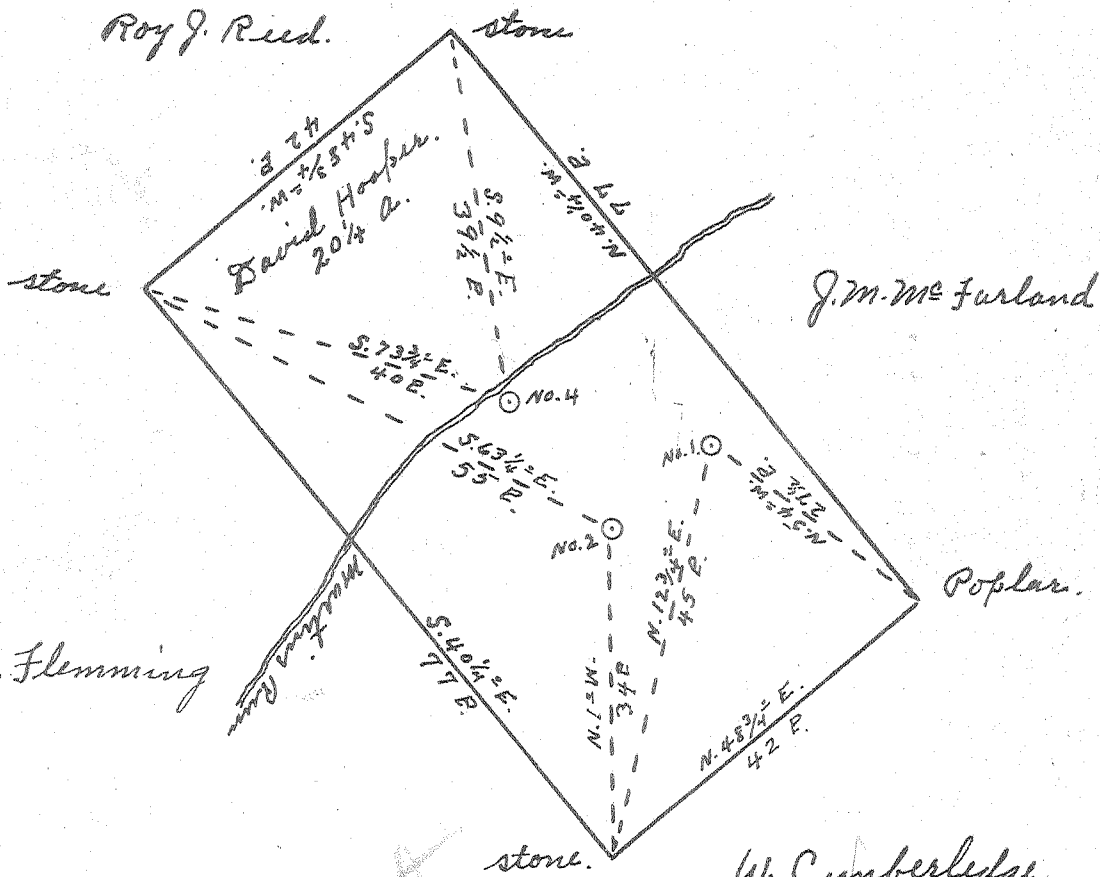


Latitude 39° 25'

Longitude 81° 05'



*not sent  
10/11/56*

#1  
a 2 w  
2.25 d

#2  
a 1 w  
2.25 d

#4  
a 18 w  
2.12 d

OCT 15 1956

New Location...   
 Drill Deeper.....   
 Abandonment.....

Company Mackey & White  
 Address Raven Rock, W. Va.  
 Farm David Hooper  
 Tract \_\_\_\_\_ Acres 20 1/4 Lease No. \_\_\_\_\_  
 Well (Farm) No. 1274 Serial No. \_\_\_\_\_  
 Elevation (Spirit Level) No. 1990', No. 2912', No. 4810'  
 Quadrangle St. Marys  
 County Pleasants District Saboyette  
 Engineer Robert R. Anderson  
By Jno Triplett, Surveyor  
 Engineer's Registration No. \_\_\_\_\_  
 File No. \_\_\_\_\_ Drawing No. 296  
 Date July 31, 1956 Scale 1" = 20 P.

STATE OF WEST VIRGINIA  
 DEPARTMENT OF MINES  
 OIL AND GAS DIVISION  
 CHARLESTON

WELL LOCATION MAP

FILE NO. PLEAS-701-A-#4

PLEAS-703-A-#1 PLEAS-702-A-#2

+ Denotes location of well on United States Topographic Maps, scale 1 to 62,500, latitude and longitude lines being represented by border lines as shown.

- Denotes one inch spaces on border line of original tracing.



STATE OF WEST VIRGINIA  
DEPARTMENT OF MINES  
OIL AND GAS DIVISION

199

WELL RECORD

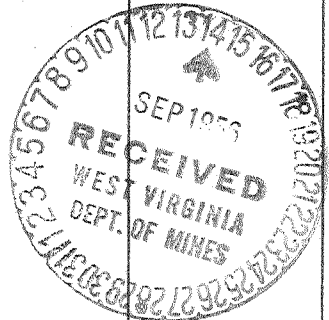
Permit No. \_\_\_\_\_ Oil or Gas Well \_\_\_\_\_ (KIND)

Company Mackey & White  
 Address Raven Rock, W.Va.  
 Farm David Hooper Acres 20<sup>+</sup>  
 Location (waters) Martins Run  
 Well No. 2 Elev. 1004  
 District Lefayette County Pleasants  
 The surface of tract is owned in fee by David Hooper hrs.  
St. Marys, W.Va. Address \_\_\_\_\_  
 Mineral rights are owned by same  
 Address \_\_\_\_\_  
 Drilling commenced 1918  
 Drilling completed \_\_\_\_\_  
 Date Shot \_\_\_\_\_ From \_\_\_\_\_ To \_\_\_\_\_  
 With \_\_\_\_\_  
 Open Flow \_\_\_\_\_ /10ths Water in \_\_\_\_\_ Inch  
 \_\_\_\_\_ /10ths Merc. in \_\_\_\_\_ Inch  
 Volume \_\_\_\_\_ Cu. Ft.  
 Rock Pressure \_\_\_\_\_ lbs. \_\_\_\_\_ hrs.  
 Oil Now dry \_\_\_\_\_ bbls., 1st 24 hrs.  
 Fresh water \_\_\_\_\_ feet \_\_\_\_\_ feet  
 Salt water \_\_\_\_\_ feet \_\_\_\_\_ feet

Casing and Tubing	Used in Drilling	Left in Well	Packers
Size			
16			Kind of Packer
13			
10			Size of
8 <sup>1</sup> / <sub>4</sub>	160	160	
6 <sup>1</sup> / <sub>4</sub>	925	925	Depth set
5 3/16			
3			Perf. top
2			Perf. bottom
Liners Used			Perf. top
			Perf. bottom

CASING CEMENTED \_\_\_\_\_ SIZE \_\_\_\_\_ No. Ft. \_\_\_\_\_ Date \_\_\_\_\_  
 COAL WAS ENCOUNTERED AT \_\_\_\_\_ FEET \_\_\_\_\_ INCHES  
 \_\_\_\_\_ FEET \_\_\_\_\_ INCHES FEET \_\_\_\_\_ INCHES  
 \_\_\_\_\_ FEET \_\_\_\_\_ INCHES FEET \_\_\_\_\_ INCHES

Formation	Color	Hard or Soft	Top	Bottom	Oil, Gas or Water	Depth Found	Remarks
Big Red		810 to	860				
Cow Run Sand		995 to	1010				
Bottom hole			1013				



OCT 26 1956

