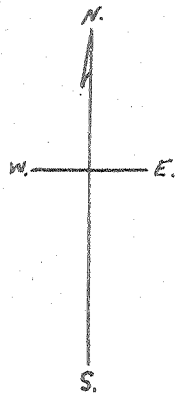
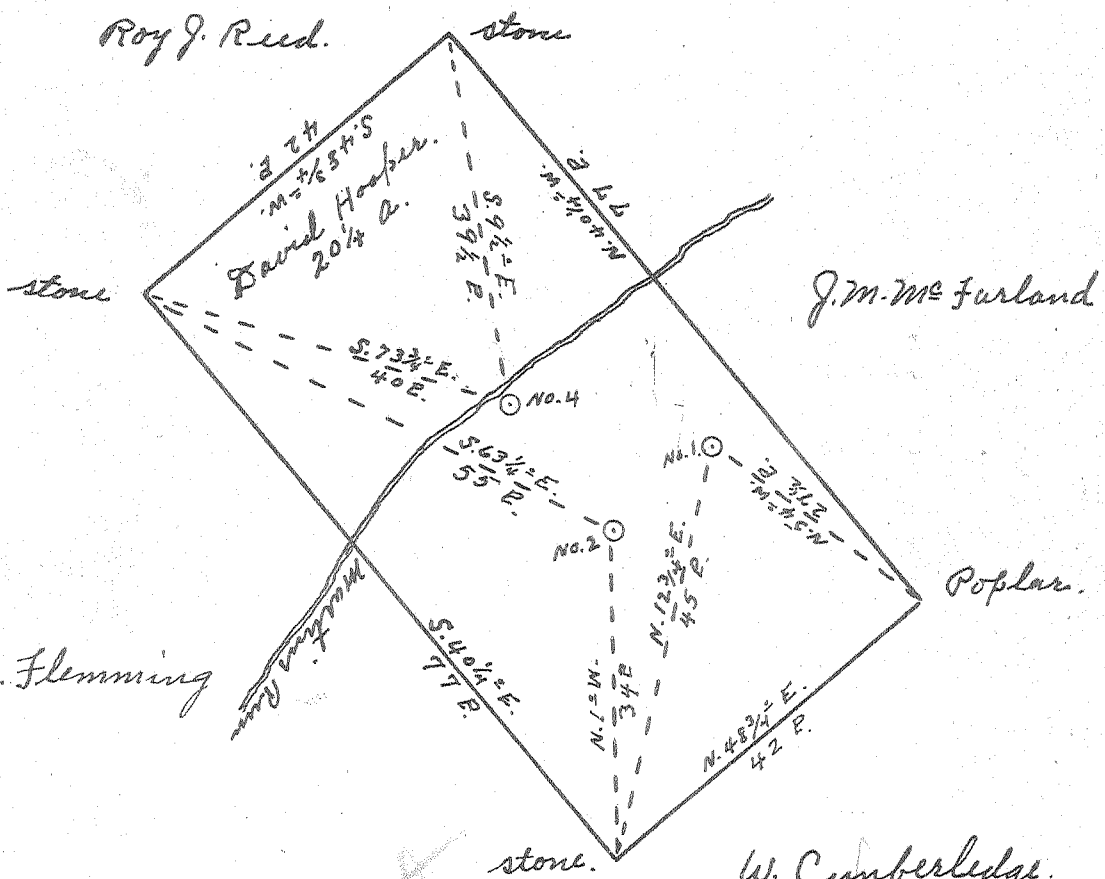


Latitude 39° 25'

Longitude 81° 05'



*Res. Plat  
10/17/56*

#1  
a/w  
m/w  
#2  
a/w  
m/w  
#3  
a/w  
m/w

OCT 15 1956

New Location..   
 Drill Deeper.....   
 Abandonment.....

Company Mackey & White  
 Address Raven Rock, W.Va.  
 Farm David Hooper  
 Tract \_\_\_\_\_ Acres 20 1/4 Lease No. \_\_\_\_\_  
 Well (Farm) No. 12r4 Serial No. \_\_\_\_\_  
 Elevation (Spirit Level) No. 1,990' No. 2,912' No. 4,810'  
 Quadrangle St. Marys  
 County Pleasant's District Safayette  
 Engineer Robert R. Anderson  
By Jno Triplett, Surveyor  
 Engineer's Registration No. \_\_\_\_\_  
 File No. \_\_\_\_\_ Drawing No. 296  
 Date July 31, 1956 Scale 1" = 20 E.

STATE OF WEST VIRGINIA  
 DEPARTMENT OF MINES  
 OIL AND GAS DIVISION  
 CHARLESTON

WELL LOCATION MAP

FILE NO. PLEAS-701-A-#4  
PLEAS-703-A-#1 PLEAS-702-A-#2  
 + Denotes location of well on United States  
 Topographic Maps, scale 1 to 62,500, lat-  
 itude and longitude lines being represented  
 by border lines as shown.  
 - Denotes one inch spaces on border line  
 of original tracing.



STATE OF WEST VIRGINIA  
DEPARTMENT OF MINES  
OIL AND GAS DIVISION

202

Permit No. 301-A-703A  
1004

WELL RECORD

Oil or Gas Well \_\_\_\_\_  
(KIND)

Company Mackey & White  
Address Raven Rock, W.Va.  
Farm David Hooper hrs. Acres 30 1/2  
Location (waters) Martins Run  
Well No. #1 Elev. 1002  
District Lafayette County Pleasants  
The surface of tract is owned in fee by D. Hooper hrs  
St. Marys, W.Va. Address \_\_\_\_\_  
Mineral rights are owned by Same  
Address \_\_\_\_\_

Drilling commenced \_\_\_\_\_  
Drilling completed about 1915  
Date Shot \_\_\_\_\_ From \_\_\_\_\_ To \_\_\_\_\_  
With \_\_\_\_\_

Open Flow \_\_\_\_\_ /10ths Water in \_\_\_\_\_ Inch  
\_\_\_\_\_ /10ths Merc. in \_\_\_\_\_ Inch  
Volume \_\_\_\_\_ Cu. Ft.  
Rock Pressure \_\_\_\_\_ lbs. \_\_\_\_\_ hrs.  
Oil Now dry \_\_\_\_\_ bbls., 1st 24 hrs.  
Fresh water \_\_\_\_\_ feet \_\_\_\_\_ feet  
Salt water \_\_\_\_\_ feet \_\_\_\_\_ feet

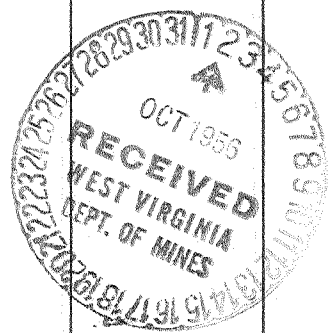
Casing and Tubing	Used in Drilling	Left in Well	Packers
Size			
16			Kind of Packer
13			
10			Size of
8 1/4	240	240	
6 5/8	955	955	Depth set
5 3/16			
3			Perf. top
2			Perf. bottom
Liners Used			Perf. top
			Perf. bottom

CASING CEMENTED \_\_\_\_\_ SIZE \_\_\_\_\_ No. Ft. \_\_\_\_\_ Date \_\_\_\_\_

COAL WAS ENCOUNTERED AT \_\_\_\_\_ FEET \_\_\_\_\_ INCHES  
\_\_\_\_\_ FEET \_\_\_\_\_ INCHES FEET \_\_\_\_\_ INCHES  
\_\_\_\_\_ FEET \_\_\_\_\_ INCHES FEET \_\_\_\_\_ INCHES

Formation	Color	Hard or Soft	Top	Bottom	Oil, Gas or Water	Depth Found	Remarks
Big Red formation Cow-Run Sand			740 980	810 995			
			Bottom Hole 1000 ft.				

202



MAR 28 1957

