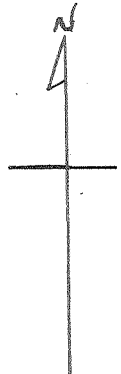
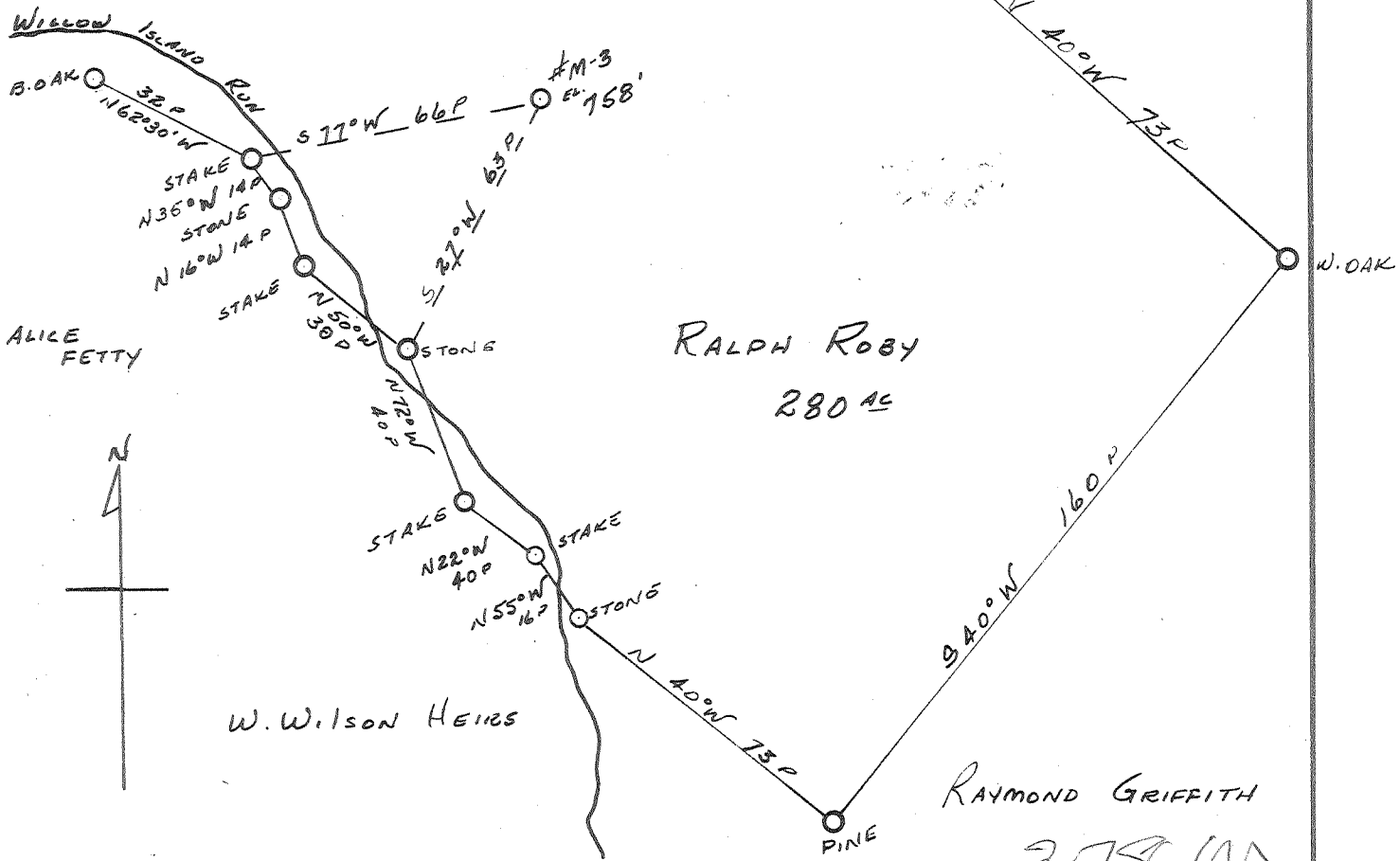


Latitude 39° 25'

Longitude 81° 05'



New Location   
 Drill Deeper   
 Abandonment

APR 4 1960

3178 W  
 1185 D

Company Hart & Hamilton  
 Address Box 26, St. Marys, W. Va.  
 Farm RALPH ROBY  
 Tract \_\_\_\_\_ Acres 280 Lease No. \_\_\_\_\_  
 Well (Farm) No. M-3 Serial No. 48  
 Elevation (Spirit Level) 758'  
 Quadrangle St. Marys  
 County Pleasants District MASKIM  
 Engineer John W. Hamilton  
 Engineer's Registration No. 2274  
 File No. \_\_\_\_\_ Drawing No. \_\_\_\_\_  
 Date 12-18-59 Scale 1" = 40 P

STATE OF WEST VIRGINIA  
 DEPARTMENT OF MINES  
 OIL AND GAS DIVISION  
 CHARLESTON

**WELL LOCATION MAP**  
 FILE NO. PLEAS-760-A

+ Denotes location of well on United States Topographic Maps, scale 1 to 62,500, latitude and longitude lines being represented by border lines as shown.

- Denotes one inch spaces on border line of original tracing.

RALPH ROBY No. M-3(48) HART & HAMILTON - PLEAS-760-A