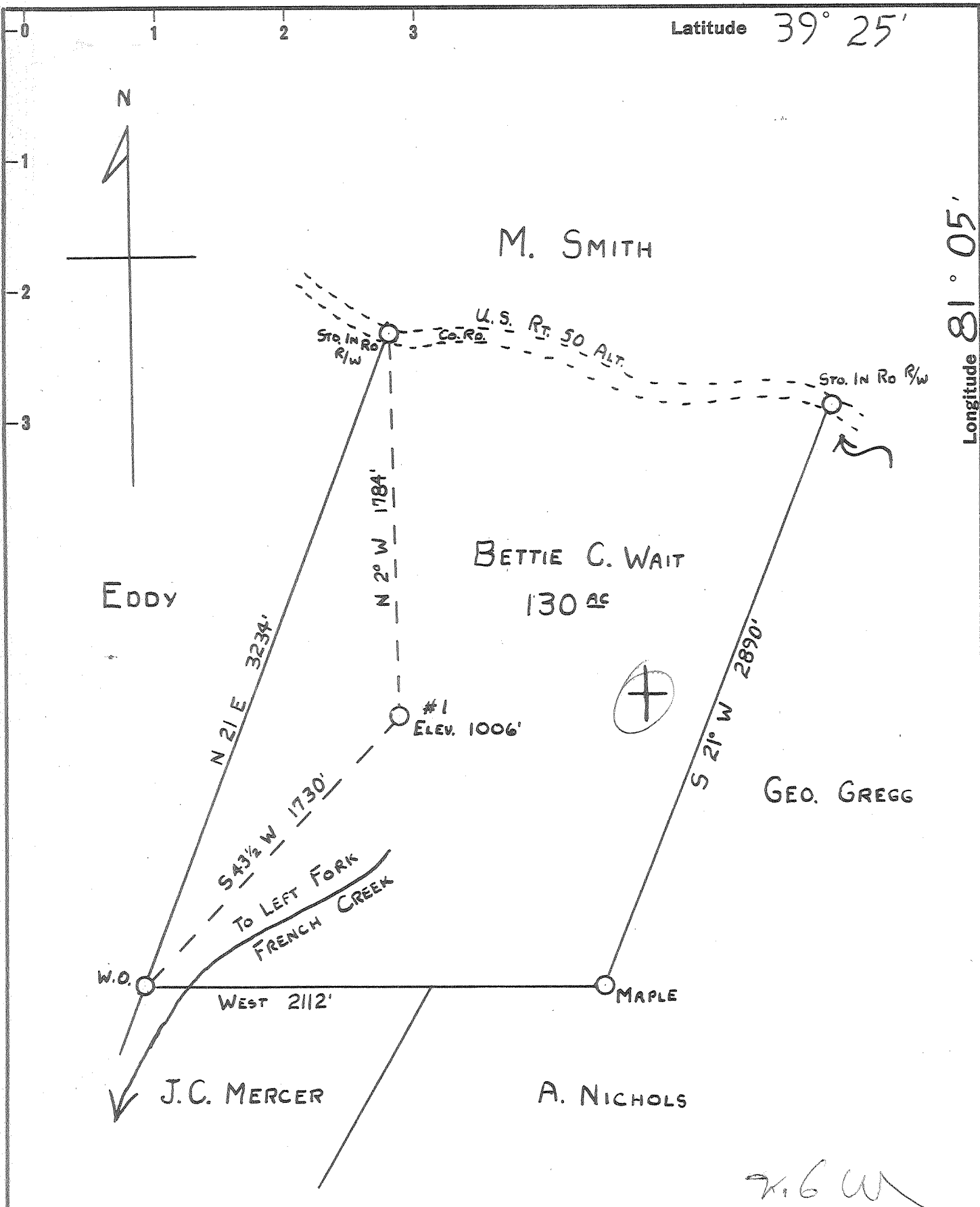


Latitude 39° 25'

Longitude 81° 05'



New Location   
 Drill Deeper   
 Abandonment

APR 18 1960

7.6 W  
 5.3 X

Company HART & HAMILTON  
 Address Box 26 ST. MARYS, W. VA.  
 Farm BETTIE C. WAIT  
 Tract \_\_\_\_\_ Acres 130 Lease No. \_\_\_\_\_  
 Well (Farm) No. 1 Serial No. 57  
 Elevation (Spirit Level) 1006'  
 Quadrangle ST. MARYS  
 County PLEASANTS District MEKIM  
 Engineer JOHN W. HAMILTON  
 Engineer's Registration No. 2274  
 File No. \_\_\_\_\_ Drawing No. \_\_\_\_\_  
 Date 3 - 19 - 60 Scale 1" = 600'

STATE OF WEST VIRGINIA  
 DEPARTMENT OF MINES  
 OIL AND GAS DIVISION  
 CHARLESTON

WELL LOCATION MAP  
 FILE NO. Pleas-768-A

+ Denotes location of well on United States Topographic Maps, scale 1 to 62,500, latitude and longitude lines being represented by border lines as shown.

- Denotes one inch spaces on border line of original tracing.

BETTIE C. WAIT No. (57) - HART & HAMILTON - PLEAS-768-A



236

STATE OF WEST VIRGINIA  
DEPARTMENT OF MINES  
OIL AND GAS DIVISION

Quadrangle St. Marys

WELL RECORD

Permit No. 2168A

Oil or Gas Well Gas  
(KIND)

Company Hart & Hamilton  
 Address 702 Second Street, St. Marys, W. Va.  
 Farm Bettie C. Wait Acres 130  
 Location (waters) French Creek - Left Fork  
 Well No. 1 Elev 1006'  
 District McKin County Pleasants  
 The surface of tract is owned in fee by \_\_\_\_\_  
 Address \_\_\_\_\_  
 Mineral rights are owned by Bettie C. Wait, Estate  
 Address \_\_\_\_\_  
 Drilling commenced March 26, 1920  
 Drilling completed \_\_\_\_\_  
 Date Shot \_\_\_\_\_ From \_\_\_\_\_ To \_\_\_\_\_  
 With \_\_\_\_\_  
 Open Flow \_\_\_\_\_ /10ths Water in \_\_\_\_\_ Inch  
 \_\_\_\_\_ /10ths Merc. in \_\_\_\_\_ Inch  
 Volume \_\_\_\_\_ Cu. Ft.  
 Rock Pressure \_\_\_\_\_ lbs. \_\_\_\_\_ hrs.  
 Oil \_\_\_\_\_ bbls., 1st 24 hrs.  
 WELL ACIDIZED \_\_\_\_\_  
 WELL FRACTURED \_\_\_\_\_

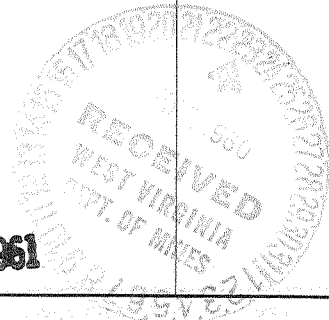
Casing and Tubing	Used in Drilling	Left in Well	Packers
Size			Kind of Packer
16			
13			
10			Size of
8 3/4			
6 3/4	<u>1060</u>		Depth set
5 3/16			
3			Perf. top
2			Perf. bottom
Liners Used			Perf. top
			Perf. bottom

CASING CEMENTED \_\_\_\_\_ SIZE \_\_\_\_\_ No. Ft. \_\_\_\_\_ Date \_\_\_\_\_

COAL WAS ENCOUNTERED AT \_\_\_\_\_ FEET \_\_\_\_\_ INCHES  
 \_\_\_\_\_ FEET \_\_\_\_\_ INCHES \_\_\_\_\_ FEET \_\_\_\_\_ INCHES  
 \_\_\_\_\_ FEET \_\_\_\_\_ INCHES \_\_\_\_\_ FEET \_\_\_\_\_ INCHES

RESULT AFTER TREATMENT \_\_\_\_\_  
 ROCK PRESSURE AFTER TREATMENT \_\_\_\_\_  
 Fresh Water \_\_\_\_\_ Feet Salt Water \_\_\_\_\_ Feet

Formation	Color	Hard or Soft	Top	Bottom	Oil, Gas or Water	Depth	Remarks
Cow Run			965	975			
1st Salt			1445	1482			
2nd Salt			1507	1552			
3rd Salt			1592	1740			
Maxton			1750	1813			
Keener			1838	1867			
Injun			1867	1897			
Total Depth				1897			



Formation	Color	Hard or Soft	Top	Bottom	Oil, Gas or Water	Depth Found	Remarks

Date March 21, 1960  
 APPROVED HART & HAMILTON, Owner  
 By *David Stov*  
 (Title)