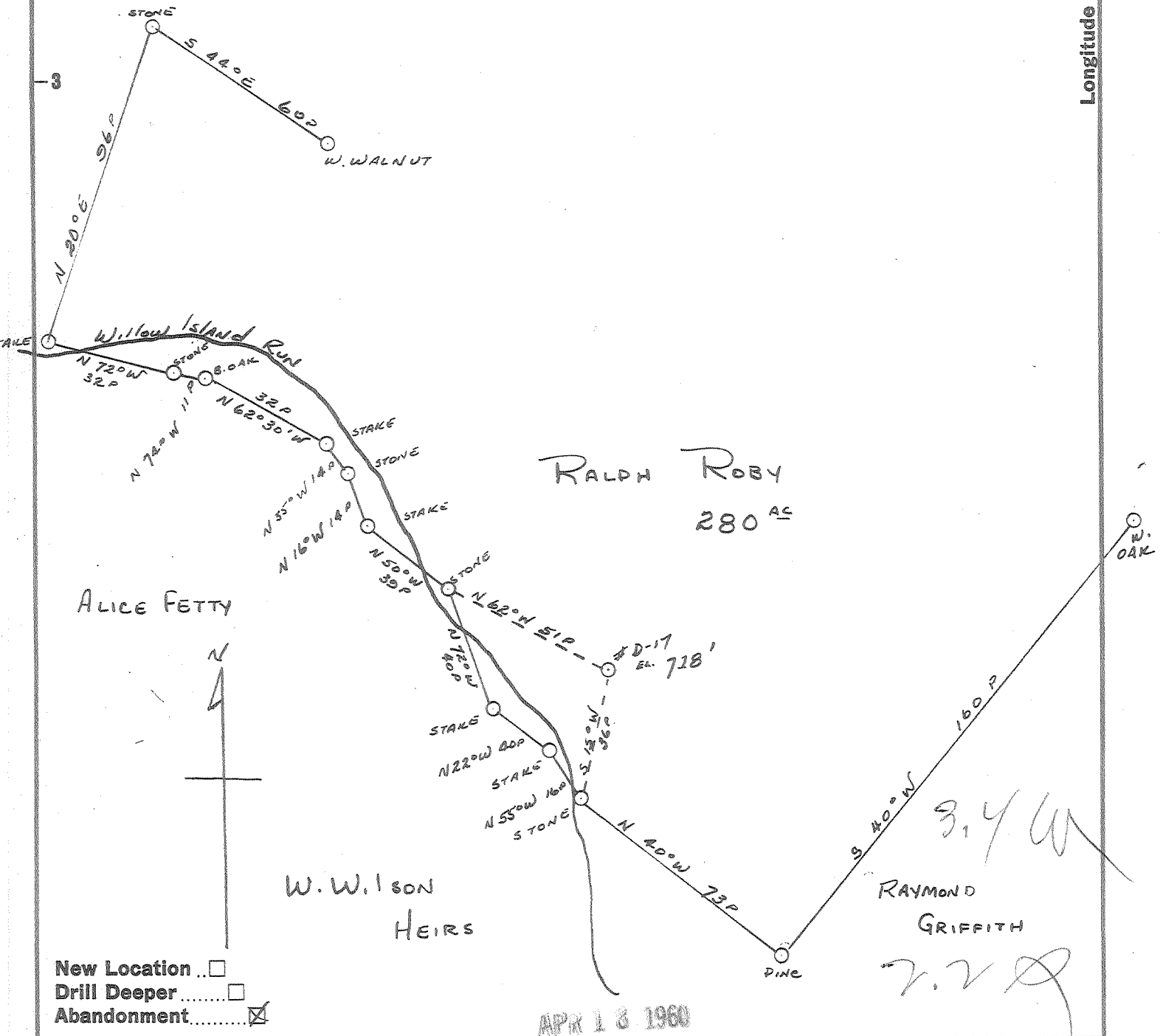


Latitude 39° 25'

Longitude 81° 05'

J. W. & S. E. Bills



- New Location
- Drill Deeper
- Abandonment

APR 18 1960

Company HART & HAMILTON  
 Address Box 26, ST. MARYS, W. VA.  
 Farm RALPH ROBY  
 Tract \_\_\_\_\_ Acres 280 Lease No. \_\_\_\_\_  
 Well (Farm) No. D-17 Serial No. 56  
 Elevation (Spirit Level) 718'  
 Quadrangle ST. MARYS  
 County PLEASANTS District McKim  
 Engineer JOHN W. HAMILTON  
 Engineer's Registration No. 2274  
 File No. \_\_\_\_\_ Drawing No. \_\_\_\_\_  
 Date 12-18-59 Scale 1" = 400'

STATE OF WEST VIRGINIA  
 DEPARTMENT OF MINES  
 OIL AND GAS DIVISION  
 CHARLESTON

WELL LOCATION MAP

FILE NO. PLEAS-771-A

+ Denotes location of well on United States Topographic Maps, scale 1 to 62,500, latitude and longitude lines being represented by border lines as shown.

- Denotes one inch spaces on border line of original tracing.

RALPH ROBY No. D-17 (56) - HART & HAMILTON - PLEAS-771-A