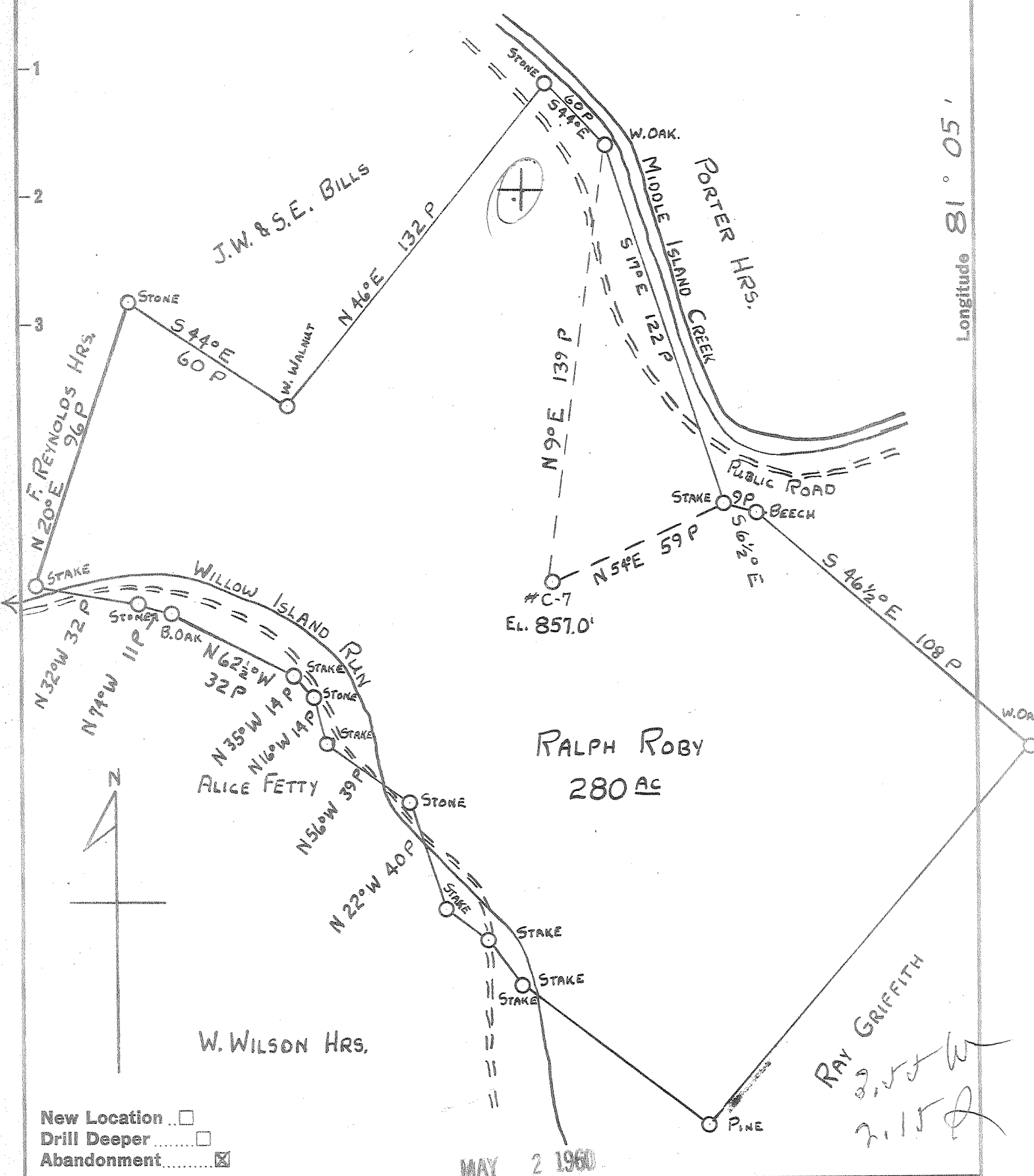


Latitude 39° 25'

Longitude 81° 05'



- New Location
- Drill Deeper
- Abandonment

MAY 2 1960

Company HART & HAMILTON
 Address BOX 26 ST. MARYS, W.VA.
 Farm RALPH ROBY
 Tract _____ Acres 280 Lease No. _____
 Well (Farm) No. C-7 Serial No. 63
 Elevation (Spirit Level) 857.0'
 Quadrangle ST. MARYS
 County PLEASANTS District MEKIM
 Engineer JOHN W. HAMILTON
 Engineer's Registration No. 2274
 File No. _____ Drawing No. _____
 Date 3-26-60 Scale 1" = 40 P

STATE OF WEST VIRGINIA
 DEPARTMENT OF MINES
 OIL AND GAS DIVISION
 CHARLESTON

WELL LOCATION MAP
 FILE NO. PLEAS-786-A

+ Denotes location of well on United States Topographic Maps, scale 1 to 62,500, latitude and longitude lines being represented by border lines as shown.

- Denotes one inch spaces on border line of original tracing.

RAY GRIFFITH
 2.15.60
 2.15.60

RALPH ROBY No. C-7 (63) - HART & HAMILTON - PLEAS-786-A