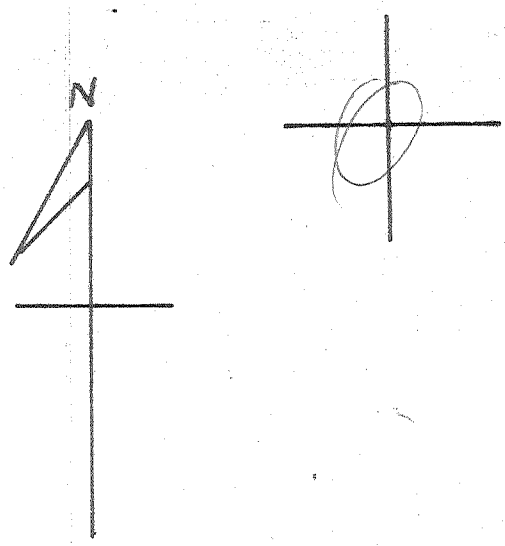


Latitude 39° 25'

Longitude 81° 05'



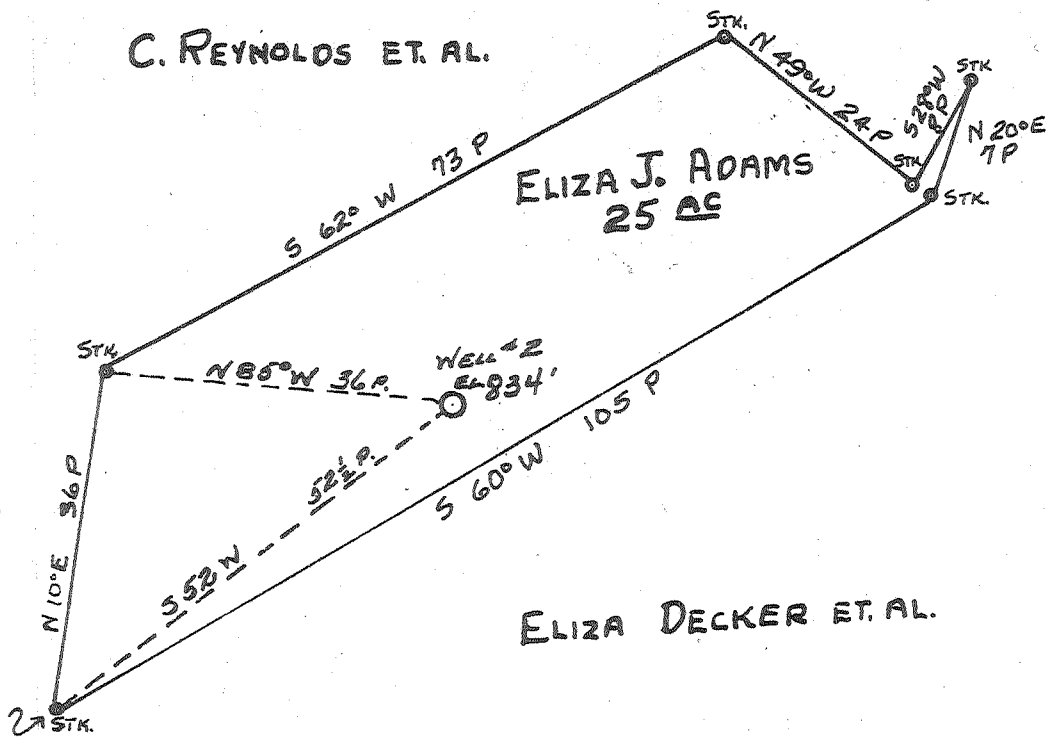
C. REYNOLDS ET. AL.

RALPH ROBY

ELIZA J. ADAMS
25 AC

J.A. BAILEY

ELIZA DECKER ET. AL.



4.40 W
1.93 A

ABANDONMENT

MAY 17 1960

| | |
|-----------------------------|-----------------------------|
| Company | HART & HAMILTON |
| Address | ST. MARYS, W.VA. |
| Farm | ELIZA J. ADAMS |
| Tract | Acres 25 Lease No. 130 |
| Well (Farm) No. | 2 Serial No. 92 |
| Elevation (Spirit Level) | 834 |
| Quadrangle | ST. MARYS |
| County | PLEASANTS District M & K M |
| Engineer | JOHN W. HAMILTON |
| Engineer's Registration No. | 2274 |
| File No. | Drawing No. |
| Date | MAY 1, 1960 Scale 1" = 20 P |

STATE OF WEST VIRGINIA
DEPARTMENT OF MINES
OIL AND GAS DIVISION
CHARLESTON

WELL LOCATION MAP
FILE NO. PLEAS-796-A

† Denotes location of well on United States Topographic Maps, scale 1 to 62,500, latitude and longitude lines being represented by border lines as shown.

- Denotes one inch spaces on border line of original tracing.

ELIZA J. ADAMS No. 2 (92) - HART & HAMILTON - PLEAS-796-A