

0 1 2 3

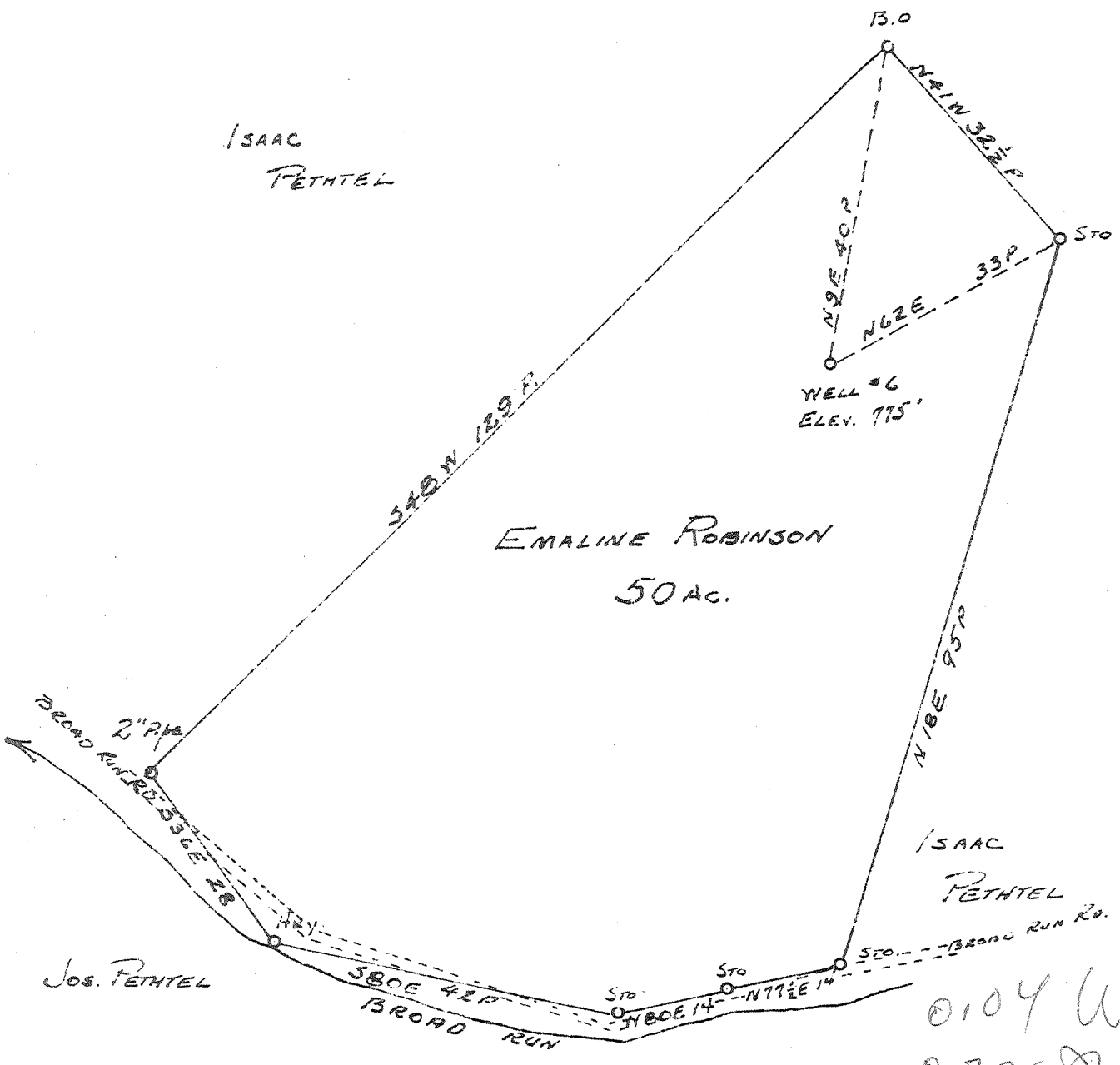
Latitude 37° 25'

Longitude 81° 10'



1
2
3

ISAAC
PETHEL



EMALINE ROBINSON
50 AC.

WELL #6
ELEV. 775'

0104 W
2172

ABANDONMENT

MAY 23 1960

Company HART & HAMILTON
 Address ST. MARYS, W.VA.
 Farm EMALINE ROBINSON
 Tract _____ Acres 50 Lease No. 48
 Well (Farm) No. 6 Serial No. 100
 Elevation (Spirit Level) 775 FT.
 Quadrangle ST. MARYS.
 County PLEASANTS District WASHINGTON
 Engineer JOHN W. HAMILTON
 Engineer's Registration No. 2274
 File No. _____ Drawing No. _____
 Date MAY 1, 1960 Scale 1"=20P

STATE OF WEST VIRGINIA
DEPARTMENT OF MINES
OIL AND GAS DIVISION
CHARLESTON

WELL LOCATION MAP
FILE NO. PLEAS-800-A

+ Denotes location of well on United States Topographic Maps, scale 1 to 62,500, latitude and longitude lines being represented by border lines as shown.

- Denotes one inch spaces on border line of original tracing.

EMALINE ROBINSON NO. 6 (100) - HART & HAMILTON - PLEAS-800-A