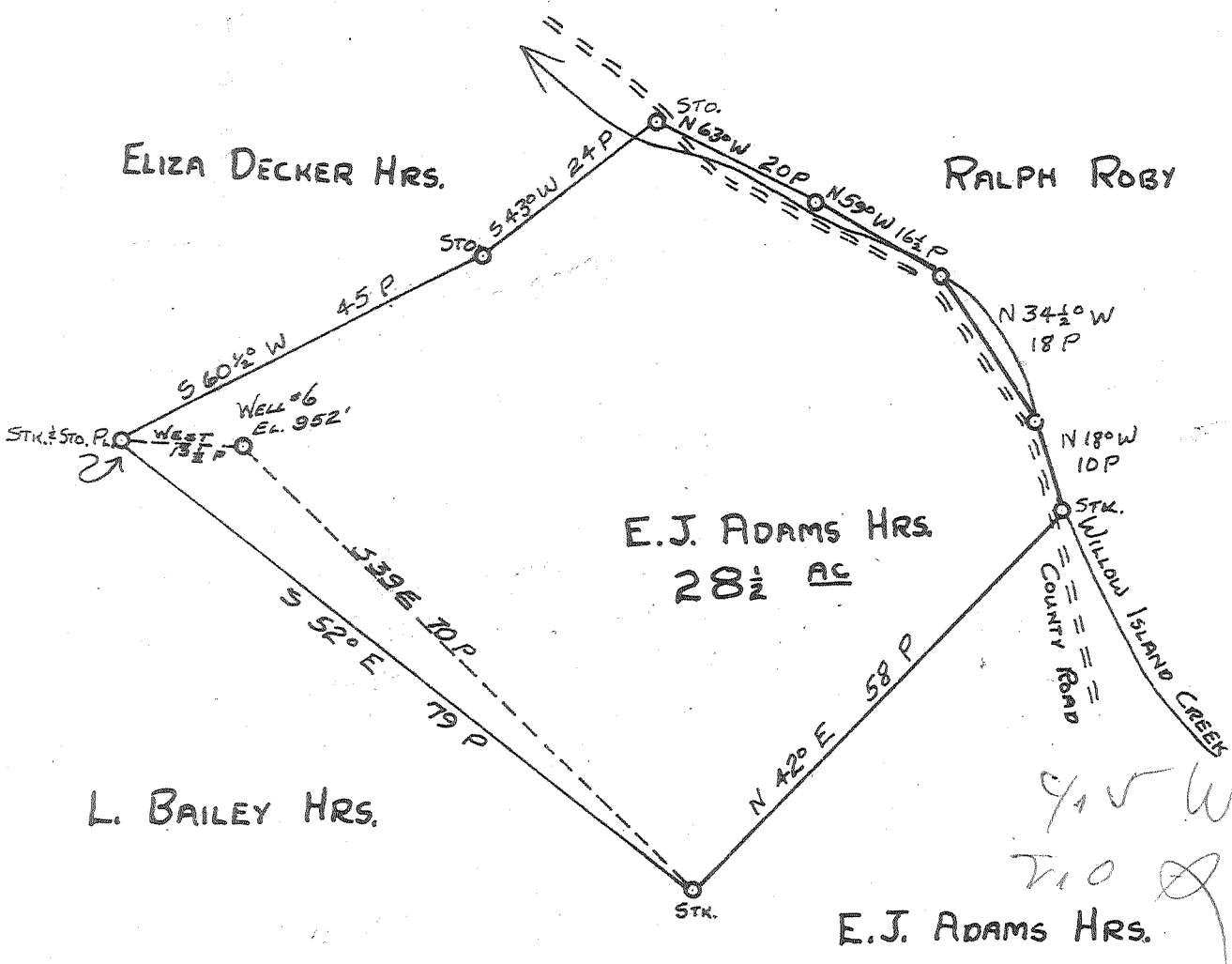
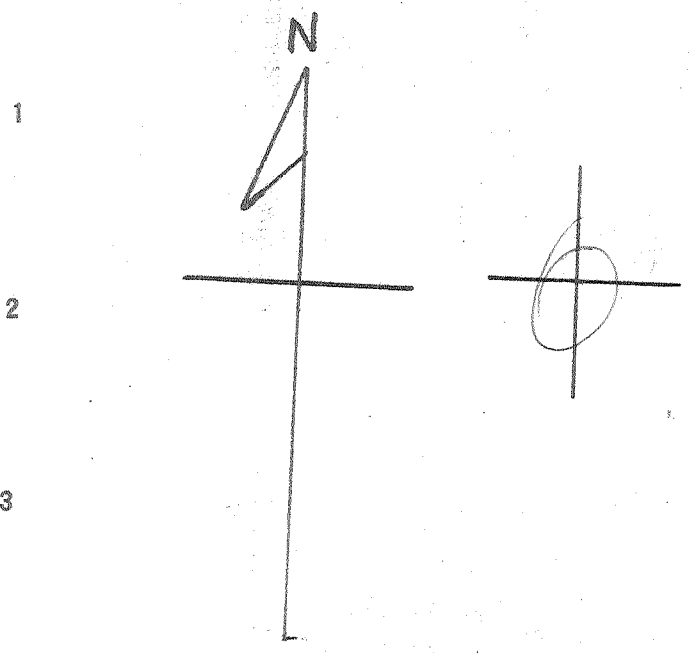


Latitude 39° 25'

Longitude 81° 05'



ABANDONMENT

MAY 23 1960

Company HART & HAMILTON
 Address ST. MARYS, W. VA.
 Farm E. J. ADAMS HRS.
 Tract Acres 28 1/2 Lease No. 123
 Well (Farm) No. 6 Serial No. 95
 Elevation (Spirit Level) 952'
 Quadrangle ST. MARYS
 County PLEASANTS District McKIM
 Engineer JOHN W. HAMILTON
 Engineer's Registration No. 2274
 File No. _____ Drawing No. _____
 Date MAY 1, 1960 Scale 1" = 20 P

STATE OF WEST VIRGINIA
 DEPARTMENT OF MINES
 OIL AND GAS DIVISION
 CHARLESTON

WELL LOCATION MAP
 FILE NO. PLEAS-801-A

† Denotes location of well on United States Topographic Maps, scale 1 to 62,500, latitude and longitude lines being represented by border lines as shown.
 - Denotes one inch spaces on border line of original tracing.

E. ADAMS ACRES 28 1/2 (25) HAMILTON