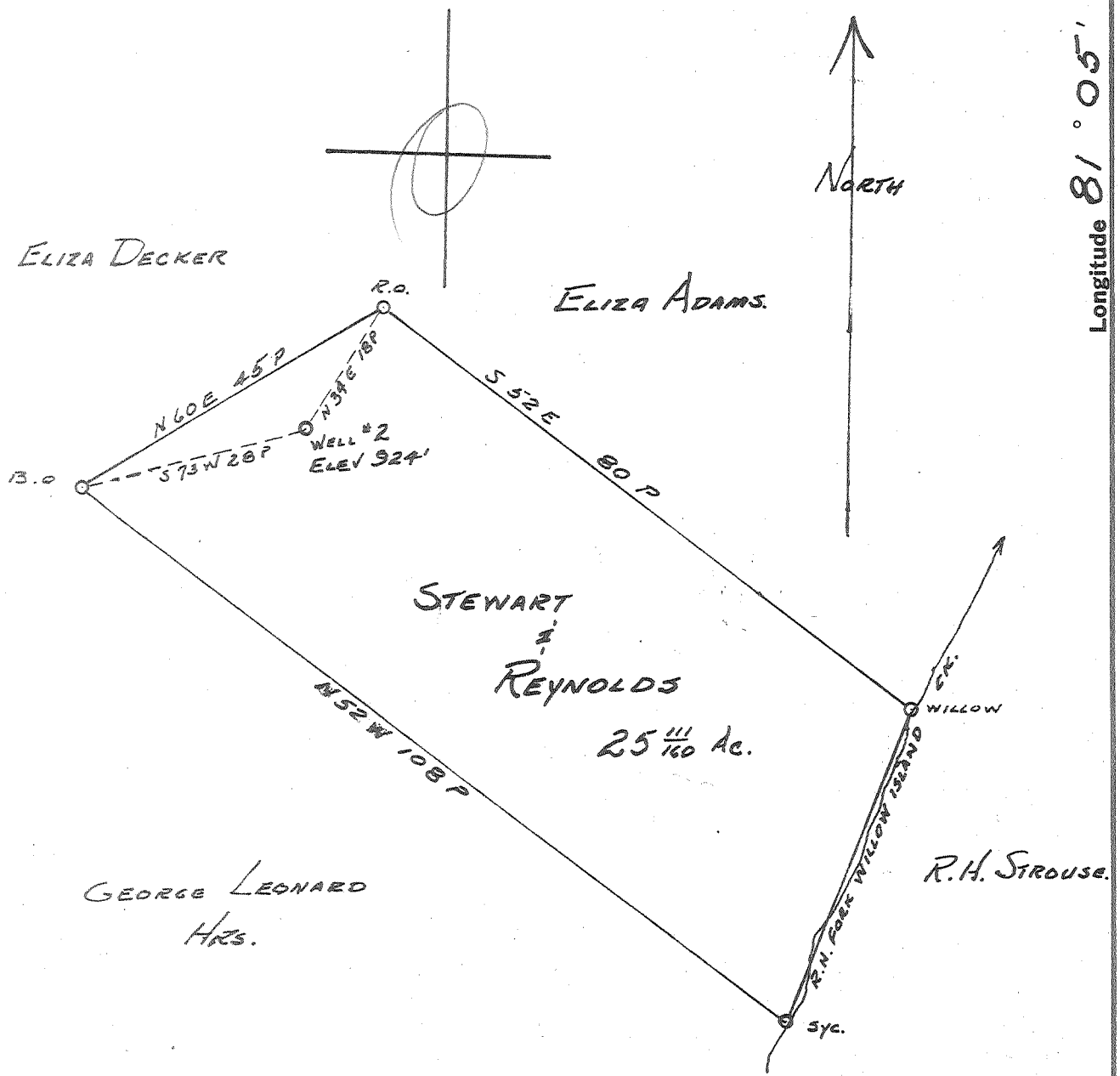


Latitude 37° 25'

Longitude 81° 05'



New Location

Drill Deeper

Abandonment

MAY 23 1960

4108 W
213 R

Company HART & HAMILTON

Address ST. MARYS, W.VA.

Farm STEWART & REYNOLDS

Tract _____ Acres 25 ^{1/160} Lease No. _____

Well (Farm) No. 2 Serial No. 83

Elevation (Spirit Level) 924 FT.

Quadrangle ST. MARYS

County PLEASANTS District McKINNEY

Engineer JOHN W. HAMILTON

Engineer's Registration No. 2274

File No. _____ Drawing No. _____

Date MAY 1, 1960 Scale 1" = 20 P.

STATE OF WEST VIRGINIA
DEPARTMENT OF MINES
OIL AND GAS DIVISION
CHARLESTON

WELL LOCATION MAP
FILE NO. PLEAS-804-A

+ Denotes location of well on United States Topographic Maps, scale 1 to 62,500, latitude and longitude lines being represented by border lines as shown.

- Denotes one inch spaces on border line of original tracing.

STEWART & REYNOLDS no. 2 (83) - HART & HAMILTON - PLEAS-804-A