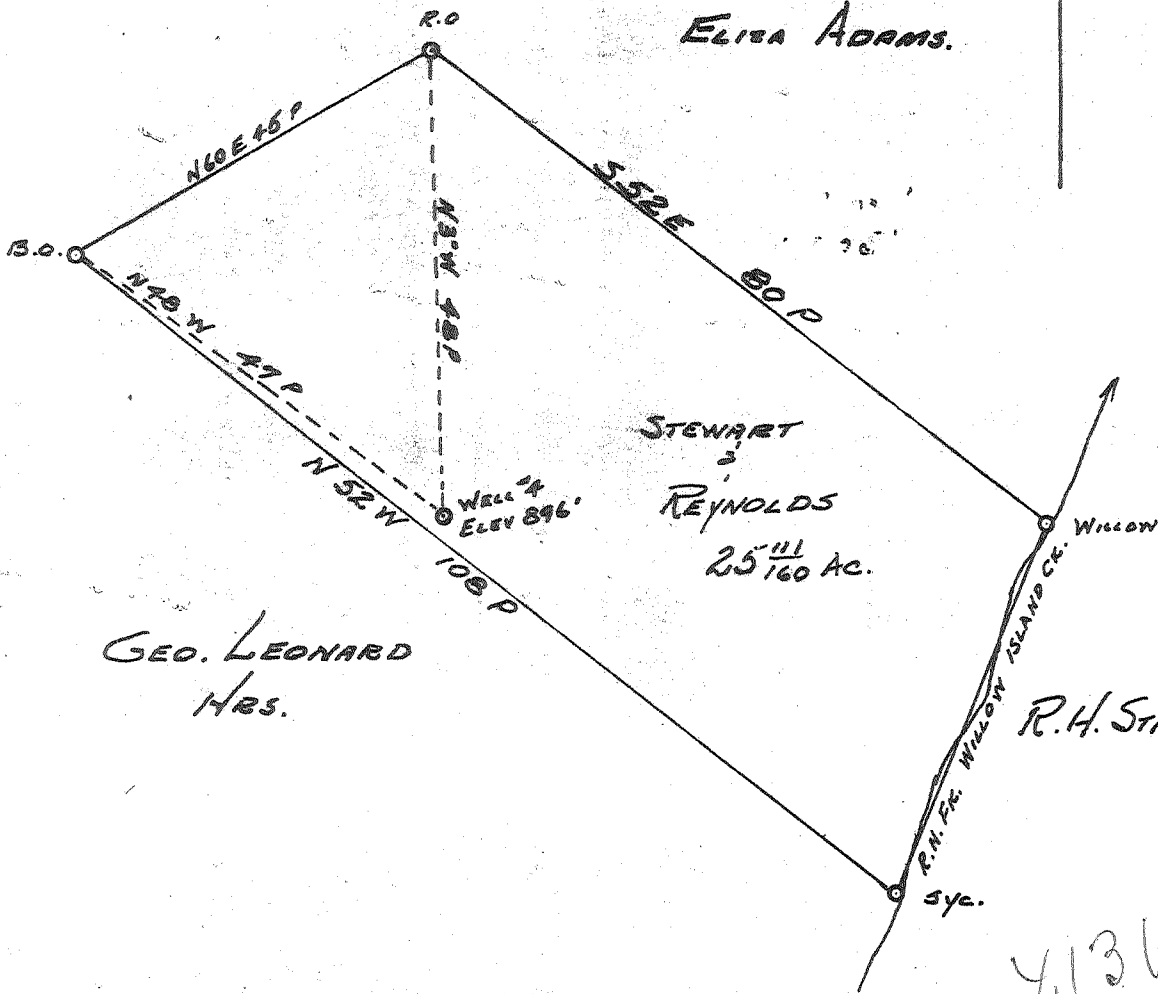


Latitude 39° 25'

Longitude 81° 05'

ELIZA DECKER

ELISA ADAMS.



GEO. LEONARD
HRS.

R.H. STROUSE.

- New Location
- Drill Deeper
- Abandonment

MAY 31 1960

413 W
2.40 R

Company HART & HAMILTON
 Address ST. MARYS, W. Va.
 Farm STEWART & REYNOLDS
 Tract _____ Acres 25 1/160 Lease No. _____
 Well (Farm) No. 4 Serial No. 81
 Elevation (Spirit Level) 896 FT.
 Quadrangle ST. MARYS.
 County PLEASANTS District Mc KIM
 Engineer JOHN W. HAMILTON
 Engineer's Registration No. 2274
 File No. _____ Drawing No. _____
 Date MAY 1, 1960 Scale 1" = 20 P

STATE OF WEST VIRGINIA
DEPARTMENT OF MINES
OIL AND GAS DIVISION
CHARLESTON

WELL LOCATION MAP
FILE NO. PLEAS-806-A

+ Denotes location of well on United States Topographic Maps, scale 1 to 62,500, latitude and longitude lines being represented by border lines as shown.

- Denotes one inch spaces on border line of original tracing.