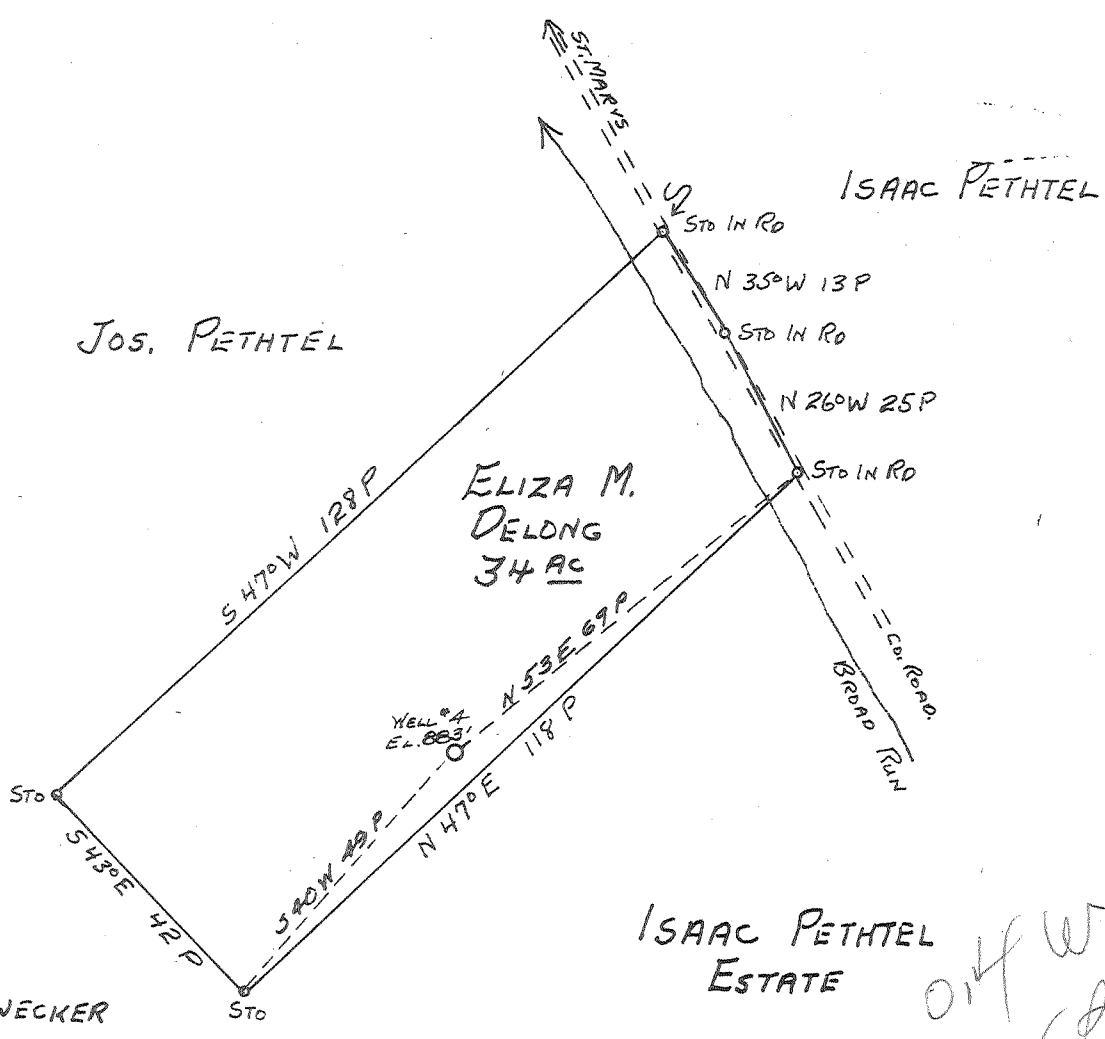
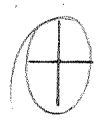
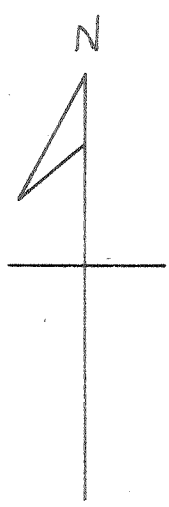


Latitude 39° 25'

Longitude 81° 10'



- New Location
- Drill Deeper
- Abandonment

JUN 27 1960

Company HART & HAMILTON

Address ST. MARYS W. VA.

Farm ELIZA M. DELONG

Tract _____ Acres 34 Lease No. 46

Well (Farm) No. 4 Serial No. 158

Elevation (Spirit Level) 883'

Quadrangle ST. MARYS

County PLEASANTS District WASHINGTON

Engineer JOHN W. HAMILTON

Engineer's Registration No. 2274

File No. _____ Drawing No. _____

Date MAY 10, 1960 Scale 1" = 30 P

STATE OF WEST VIRGINIA
 DEPARTMENT OF MINES
 OIL AND GAS DIVISION
 CHARLESTON

WELL LOCATION MAP
 FILE NO. PLEAS-830-A

- + Denotes location of well on United States Topographic Maps, scale 1 to 62,500, latitude and longitude lines being represented by border lines as shown.
- Denotes one inch spaces on border line of original tracing.

ELIZA M. DELONG NO. 4 (158) - HART & HAMILTON - PLEAS-830-A

ELIZA DeLONG NO. 1 WELL.

Not located. 514

Washington District, Pleasants County, W. Va.
 On Broad Run, 2 mi. S. E. of St. Marys.
 Bartlett & Standcliffe.

829A

	Top.	Bottom.
Cow Run Sand (oil, 617-630')	610	631
Total depth		649

ELIZA DeLONG NO. 2 WELL.

Not located. 515

	Top.	Bottom.
8 1/2" casing, 335': 6 1/4", 735'.		
Cow Run Sand	762	783
Total depth		795

ELIZA DeLONG NO. 3 WELL.

Not located. 516

	Top.	Bottom.
8 1/2" casing, 325': 6 1/4", 800'.		
Cow Run Sand	800	815
Total depth		823

ELIZA DeLONG NO. 4 WELL.

Not located. 517

	Top.	Bottom.
8 1/2" casing, 455': 6 1/4", 915'.		
Cow Run Sand	926	941
Total depth		945

830A

ELIZA DeLONG NO. 5 WELL.

Not located. 518

	Top.	Bottom.
8 1/2" casing, 475': 6 1/4", 935'.		
Cow Run Sand	944	962
Total depth		996

832A

ERIZA DELONG (12' LONG) NO. 4 WELL. No. 7 (pt.) O.F.-Pleasants

Washington
..... District, Pleasants County, W. Va.
Bartlett & Stancliffe.
Completed in 1896.
On Broad Run, 2½ mi. E. from St. Marys.
Conductor, 12'; 8½" casing, 455'; 6½", 915'.

830A

	Top.	Bottom.
Cow Run Sand	926	941
Pocket (4'), to bottom	941	945