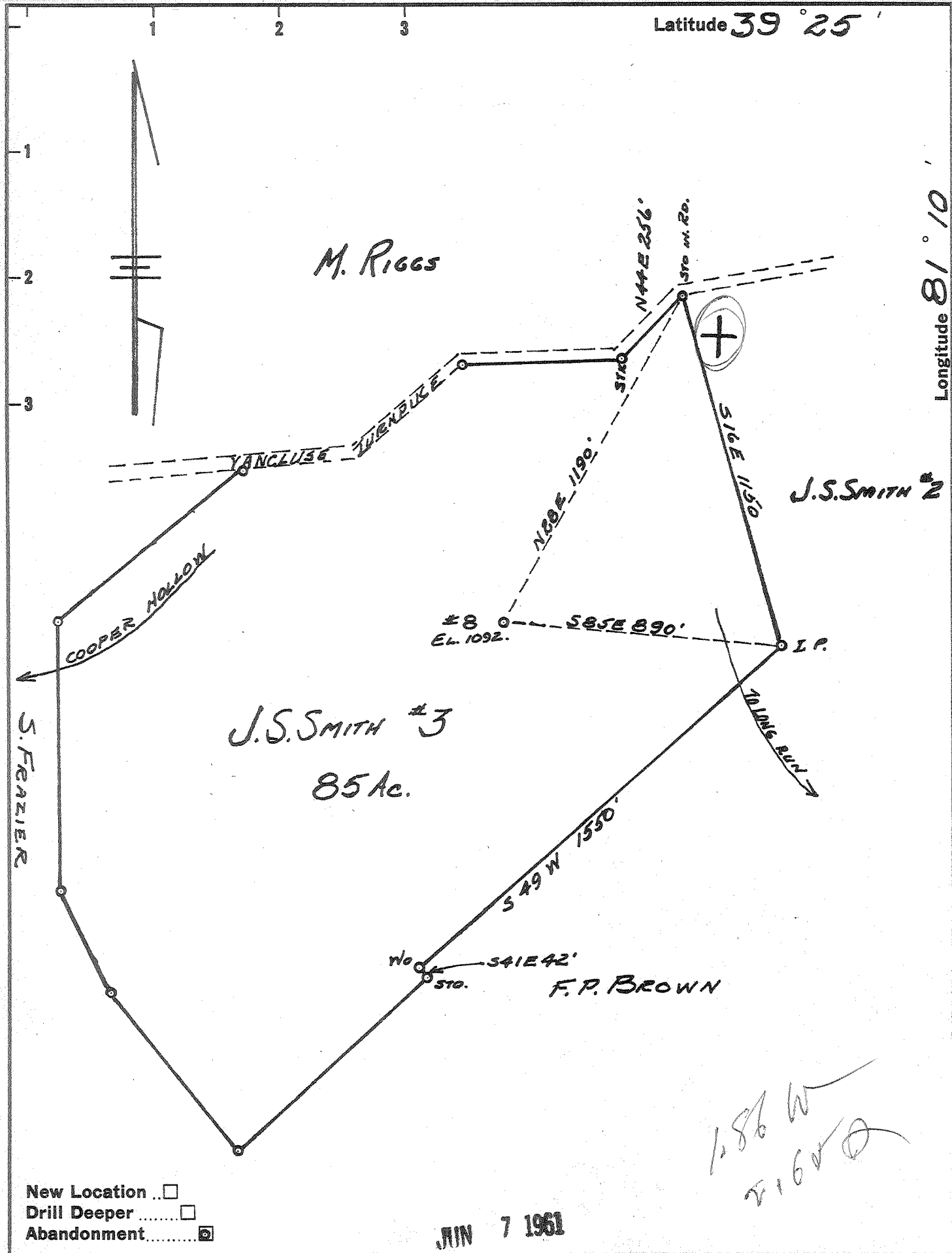


Latitude 39° 25'

Longitude 81° 10'



New Location   
 Drill Deeper   
 Abandonment

JUN 7 1961

Company LEONARD HART  
 Address ST. MARYS, W. VA.  
 Farm J.S. SMITH  
 Tract 3 Acres 85 Lease No. 11  
 Well (Farm) No. 8 Serial No. \_\_\_\_\_  
 Elevation (Spirit Level) 1092'  
 Quadrangle ST. MARYS  
 County PLEASANTS District WASHINGTON  
 Engineer JOHN W. HAMILTON  
 Engineer's Registration No. 2274  
 File No. \_\_\_\_\_ Drawing No. 237  
 Date SEPT. 10, 1960 Scale 1" = 400

STATE OF WEST VIRGINIA  
 DEPARTMENT OF MINES  
 OIL AND GAS DIVISION  
 CHARLESTON

WELL LOCATION MAP  
 FILE NO. PLEAS-888-A

+ Denotes location of well on United States Topographic Maps, scale 1 to 62,500, latitude and longitude lines being represented by border lines as shown.

- Denotes one inch spaces on border line of original tracing.

K&E 150 IMPERIAL TRACING CLOTH T.M. 66008  
 J.S. SMITH No. 8 — LEONARD HART — PLEAS-888-A



STATE OF WEST VIRGINIA  
DEPARTMENT OF MINES  
OIL AND GAS DIVISION

~~776~~  
777

Quadrangle St. Marys

Permit No. 888A

WELL RECORD

Oil or Gas Well Oil  
(KIND)

Company Leonard Hart  
Address 702 Second Street, St. Marys, W. Va.  
Farm J. S. Smith #3 Acres 85  
Location (waters) \_\_\_\_\_  
Well No. 8 Elev. 1092'  
District Washington County Pleasants  
The surface of tract is owned in fee by \_\_\_\_\_  
Address \_\_\_\_\_  
Mineral rights are owned by Josephine Smith et al  
1106 - 36th Street Address Parkersburg, W. Va.  
Drilling commenced \_\_\_\_\_  
Drilling completed 1925 - Redrilled  
Date Shot 7-1925 From 636 To 646  
With \_\_\_\_\_  
Open Flow /10ths Water in \_\_\_\_\_ Inch  
/10ths Merc. in \_\_\_\_\_ Inch  
Volume \_\_\_\_\_ Cu. Ft.  
Rock Pressure \_\_\_\_\_ lbs. \_\_\_\_\_ hrs.  
Oil \_\_\_\_\_ bbls., 1st 24 hrs.  
WELL ACIDIZED \_\_\_\_\_  
WELL FRACTURED \_\_\_\_\_

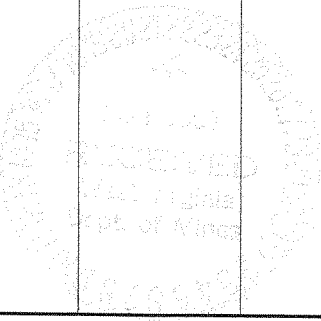
Casing and Tubing	Used in Drilling	Left in Well	Packers
Size			Kind of Packer
16			
13			
10			Size of
8 1/4			
6 1/4	622'		Depth set
5 1/16	760'		
3			Perf. top
2			Perf. bottom
Liners Used			Perf. top
			Perf. bottom

CASING CEMENTED \_\_\_\_\_ SIZE \_\_\_\_\_ No. Ft. \_\_\_\_\_ Date \_\_\_\_\_

COAL WAS ENCOUNTERED AT \_\_\_\_\_ FEET \_\_\_\_\_ INCHES  
\_\_\_\_\_ FEET \_\_\_\_\_ INCHES FEET \_\_\_\_\_ INCHES  
\_\_\_\_\_ FEET \_\_\_\_\_ INCHES FEET \_\_\_\_\_ INCHES

RESULT AFTER TREATMENT \_\_\_\_\_  
ROCK PRESSURE AFTER TREATMENT \_\_\_\_\_  
Fresh Water \_\_\_\_\_ Feet Salt Water \_\_\_\_\_ Feet

Formation	Color	Hard or Soft	Top	Bottom	Oil, Gas or Water	Depth	Remarks
Cow Run			762'	784'			
Total Depth				789'			



APR 6 1962

