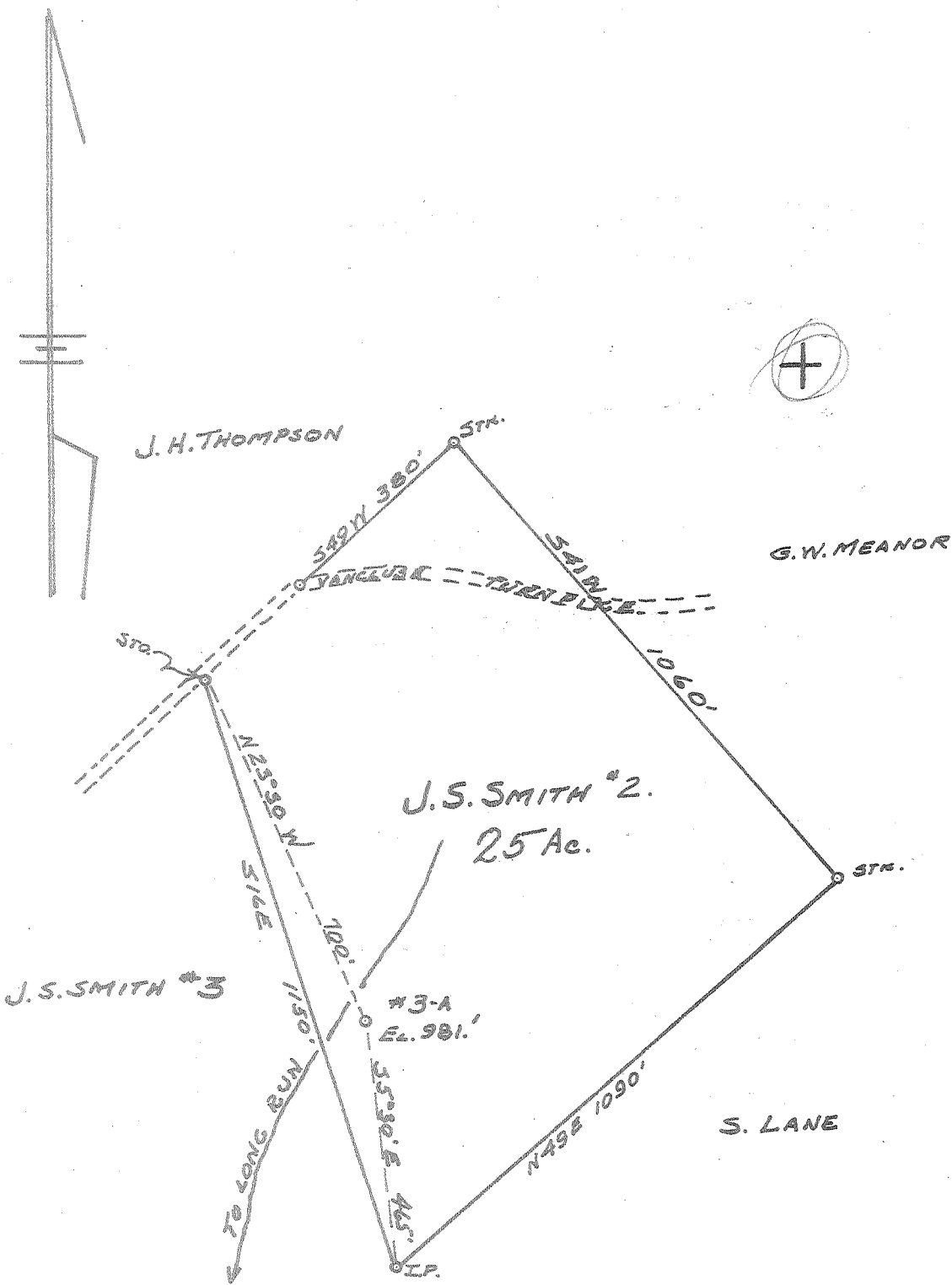


Latitude 39° 25'

Longitude 81° 10'



New Location
 Drill Deeper
 Abandonment

JUL 22 1962

119 W
 217 Q

Company	LEONARD HART	
Address	ST. MARIS, W.VA.	
Farm	J.S. SMITH.	
Tract #2	Acres 25	Lease No. 10
Well (Farm) No.	3-A	Serial No.
Elevation (Spirit Level)	981.0'	
Quadrangle	St. Maris.	
County	PLEASANTS	District WASHINGTON
Engineer	JOHN W. HAMILTON	
Engineer's Registration No.	2274	
File No.		Drawing No. 229
Date	AUG. 30, 1960	Scale 1" = 300'

STATE OF WEST VIRGINIA
 DEPARTMENT OF MINES
 OIL AND GAS DIVISION
 CHARLESTON

WELL LOCATION MAP
 FILE NO. PLEAS-970-A

+ Denotes location of well on United States Topographic Maps, scale 1 to 62,500, latitude and longitude lines being represented by border lines as shown.
 - Denotes one inch spaces on border line of original tracing.