

Latitude 39° 25'

Longitude 81° 10'

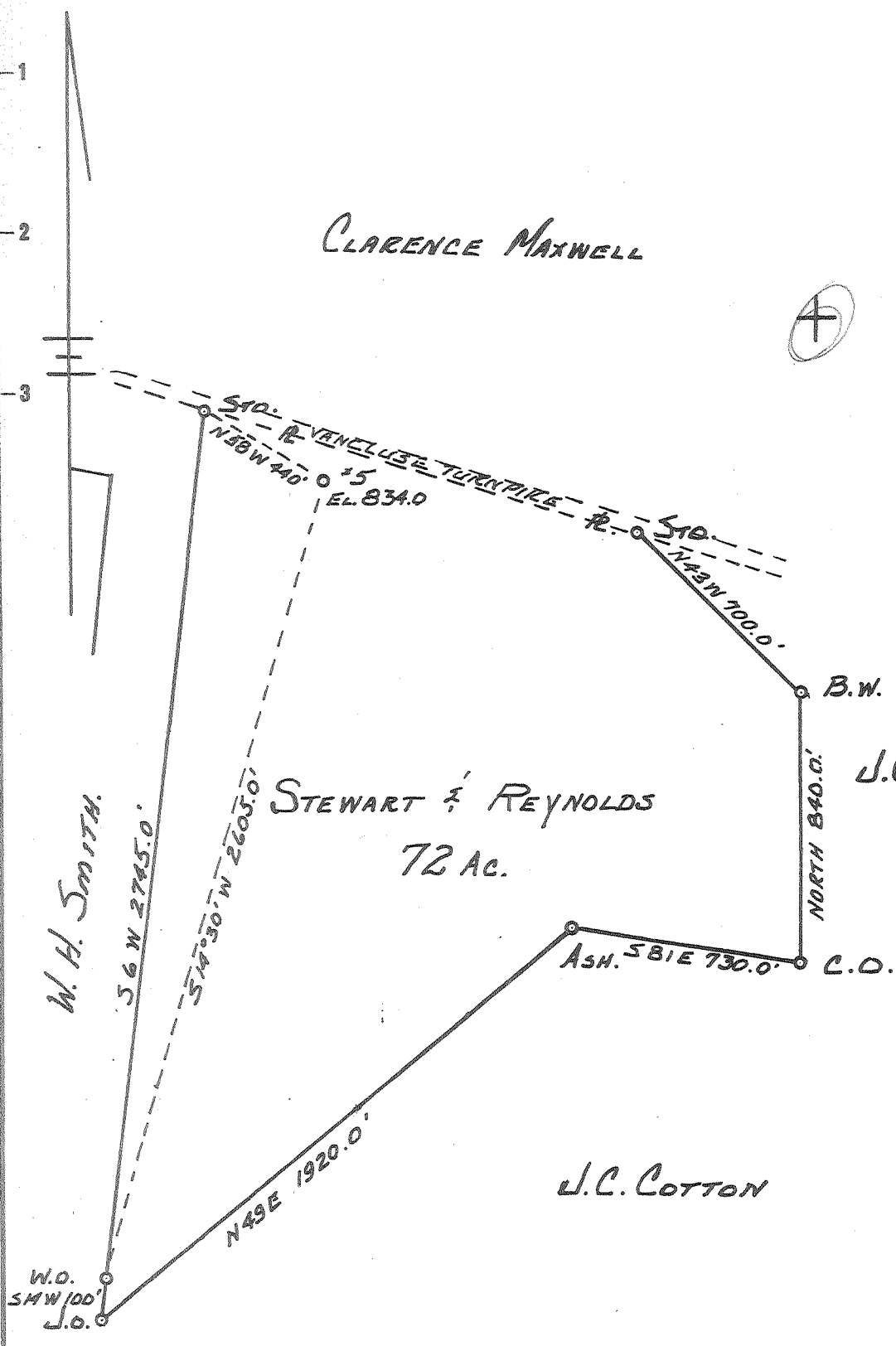
CLARENCE MAXWELL



STEWART & REYNOLDS
72 AC.

J.C. SMITH

J.C. COTTON



- New Location ..
- Drill Deeper ..
- Abandonment ..

AUG - 1 1962

214 W
217 V

Company LEONARD HART
 Address ST. MARYS, W.VA.
 Farm STEWART & REYNOLDS
 Tract _____ Acres 72 Lease No. 8
 Well (Farm) No. 5 Serial No. _____
 Elevation (Spirit Level) 834.0
 Quadrangle ST. MARYS
 County PLEASANTS District WASHINGTON
 Engineer JOHN W. HAMILTON
 Engineer's Registration No. 2274
 File No. _____ Drawing No. 291
 Date Nov. 1, 1960 Scale 1" = 500'

STATE OF WEST VIRGINIA
 DEPARTMENT OF MINES
 OIL AND GAS DIVISION
 CHARLESTON

WELL LOCATION MAP
 FILE NO. PLEAS-978-A

- + Denotes location of well on United States Topographic Maps, scale 1 to 62,500, latitude and longitude lines being represented by border lines as shown.
- Denotes one inch spaces on border line of original tracing.