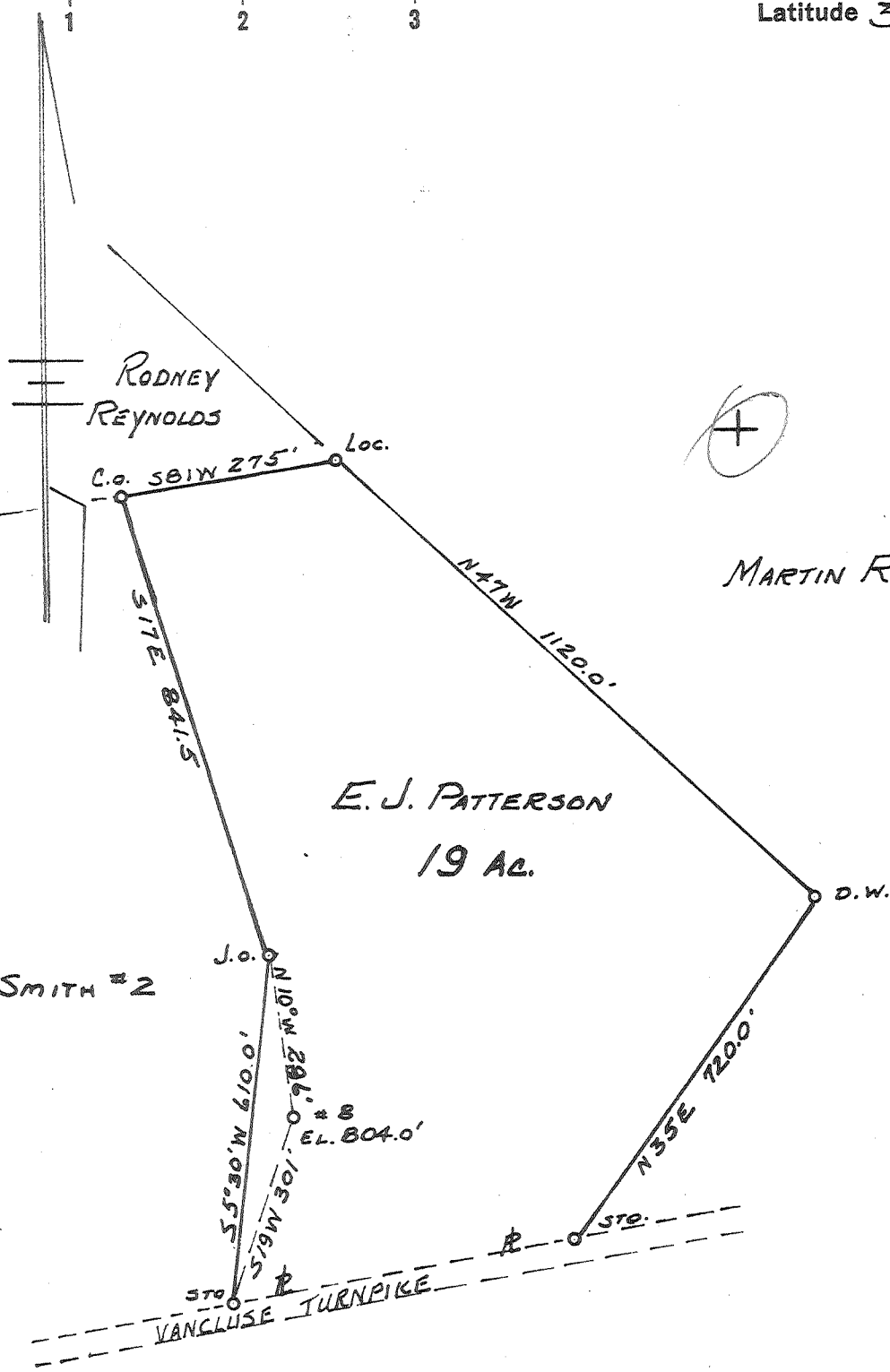


Latitude 39° 25'

Longitude 81° 10'



W.H. SMITH #2

E. J. PATTERSON
19 AC.

MARTIN RIGGS.

W.H. SMITH #1.

- New Location ..
- Drill Deeper
- Abandonment

AUG 19 1962

Martin Riggs
W.H. Smith

Company	HART & HAMILTON.
Address	ST. MARYS, W.VA.
Farm	E. J. PATTERSON
Tract	Acres 19 Lease No. 16
Well (Farm) No.	8 Serial No.
Elevation (Spirit Level)	804.0'
Quadrangle	ST. MARYS
County	PLEASANTS District WASHINGTON
Engineer	JOHN W. HAMILTON
Engineer's Registration No.	2274
File No.	Drawing No. 262
Date	SEPT 20, 1960 Scale 1" = 300'

STATE OF WEST VIRGINIA
DEPARTMENT OF MINES
OIL AND GAS DIVISION
CHARLESTON

WELL LOCATION MAP
FILE NO. PLEAS-989-A

+ Denotes location of well on United States Topographic Maps, scale 1 to 62,500, latitude and longitude lines being represented by border lines as shown.

- Denotes one inch spaces on border line of original tracing.