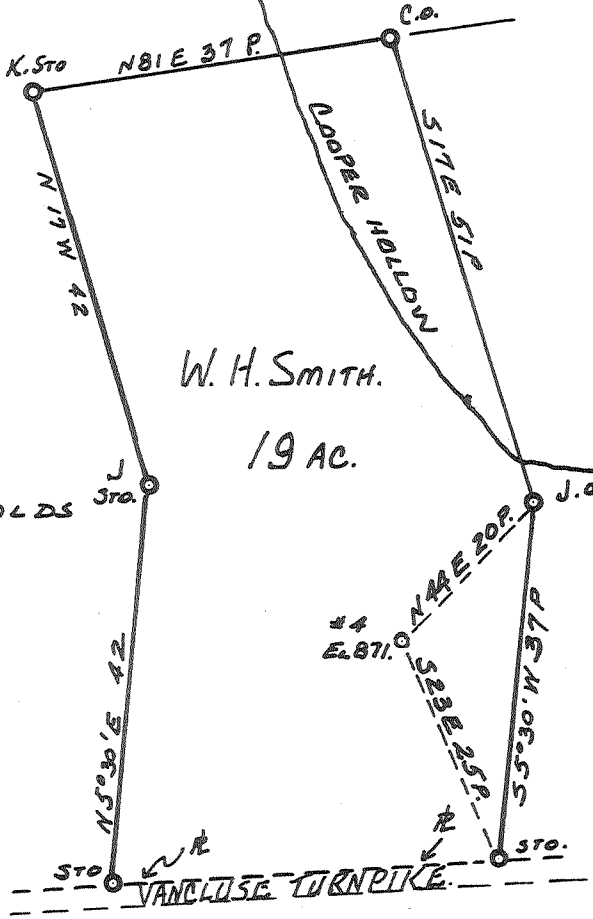


Latitude 39° 25'

Longitude 81° 10'

RODNEY REYNOLDS



E. J. PATTERSON

W. H. SMITH.
19 AC.

RODNEY REYNOLDS

W. H. SMITH # 1

Handwritten notes:
215-200
216 D

New Location ..
Drill Deeper
Abandonment.....

AUG 19 1962

Company	HART & HAMILTON
Address	ST. MARYS. W.VA.
Farm	W.H. SMITH
Tract	2 Acres 19 Lease No. 1
Well (Farm) No.	4 Serial No.
Elevation (Spirit Level)	871.0'
Quadrangle	ST. MARYS.
County	PLEASANTS District WASHINGTON
Engineer	JOHN W. HAMILTON
Engineer's Registration No.	2274
File No.	Drawing No. 257
Date	SEPT. 20. 1960 Scale 1" = 20 FEET

STATE OF WEST VIRGINIA
DEPARTMENT OF MINES
OIL AND GAS DIVISION
CHARLESTON

WELL LOCATION MAP
FILE NO. PLEAS-990-A

+ Denotes location of well on United States Topographic Maps, scale 1 to 62,500, latitude and longitude lines being represented by border lines as shown.

- Denotes one inch spaces on border line of original tracing.