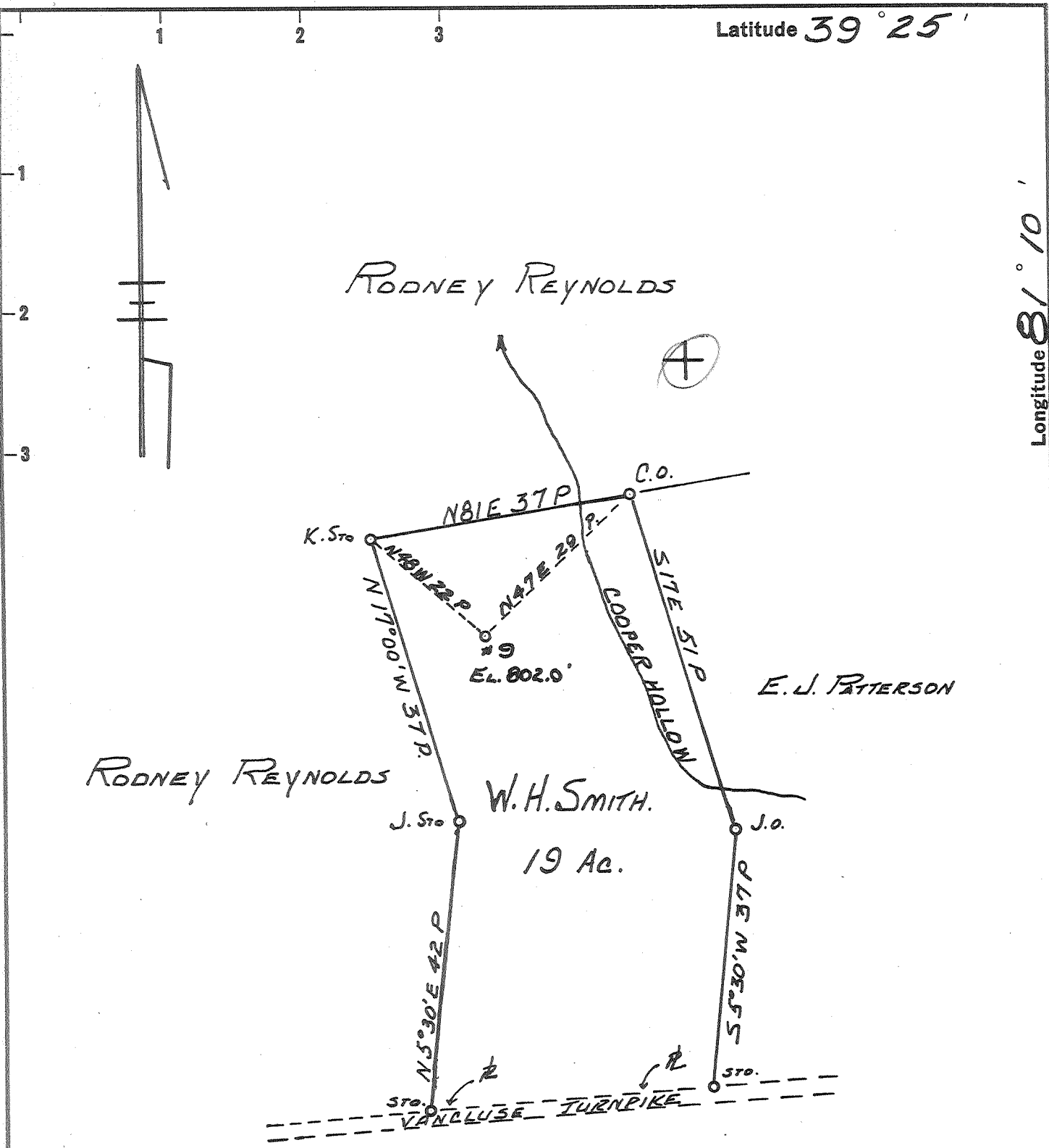


Latitude 39° 25'

Longitude 81° 10'



RODNEY REYNOLDS

RODNEY REYNOLDS

E. J. PATTERSON

W. H. SMITH.
19 Ac.

W. H. SMITH #1

206 W
205 V &

New Location ..
 Drill Deeper
 Abandonment.....

AUG : 9 1962

Company HART & HAMILTON
 Address ST. MARYS, W.VA.
 Farm W.H. SMITH
 Tract 2 Acres 19 Lease No. 1
 Well (Farm) No. 9 Serial No. _____
 Elevation (Spirit Level) 802.0'
 Quadrangle ST. MARYS
 County PLEASANTS District WASHINGTON
 Engineer JOHN W. HAMILTON
 Engineer's Registration No. 2274
 File No. _____ Drawing No. 260
 Date SEPT 20, 1960 Scale 1" = 20 POLES.

STATE OF WEST VIRGINIA
 DEPARTMENT OF MINES
 OIL AND GAS DIVISION
 CHARLESTON

WELL LOCATION MAP
 FILE NO. PLEAS-992-A

+ Denotes location of well on United States Topographic Maps, scale 1 to 62,500, latitude and longitude lines being represented by border lines as shown.

- Denotes one inch spaces on border line of original tracing.