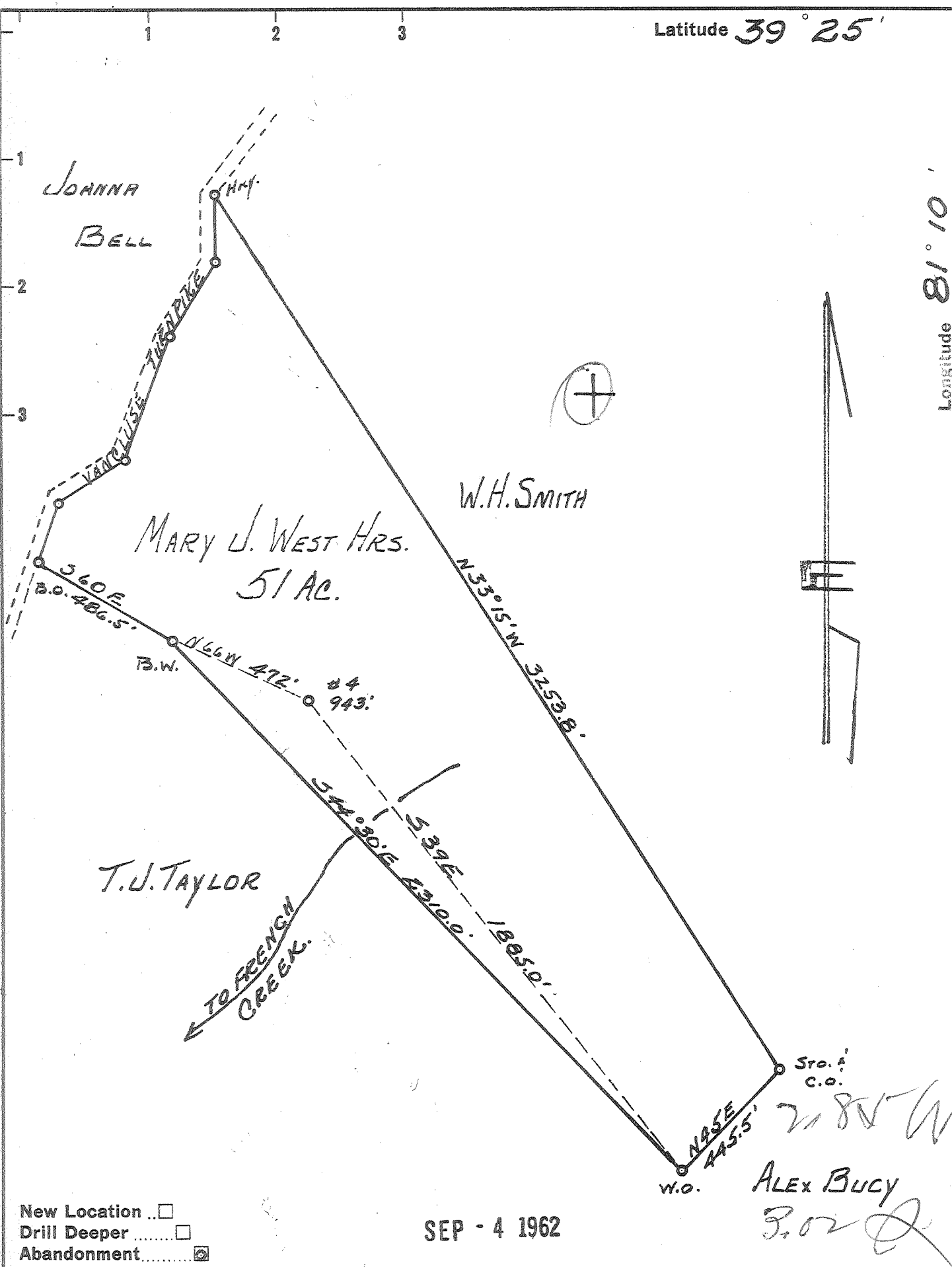


Latitude 39° 25'

Longitude 81° 10'



- New Location
- Drill Deeper
- Abandonment

SEP - 4 1962

Sto. & C.O.  
 2185 W  
 ALEX BUCY  
 B.O.

Company	LEONARD HART
Address	ST. MARYS. W. VA.
Farm	MARY J. WEST HRS.
Tract	Acres 51 Lease No. 5
Well (Farm) No.	4 Serial No.
Elevation (Spirit Level)	943'
Quadrangle	ST. MARYS
County	PLEASANTS District WASHINGTON
Engineer	JOHN W. HAMILTON
Engineer's Registration No.	2274
File No.	Drawing No. 242
Date	SEPT 10. 1960 Scale 1" = 400'

STATE OF WEST VIRGINIA  
 DEPARTMENT OF MINES  
 OIL AND GAS DIVISION  
 CHARLESTON

WELL LOCATION MAP  
 FILE NO. PLEAS-1005-A

+ Denotes location of well on United States Topographic Maps, scale 1 to 62,500, latitude and longitude lines being represented by border lines as shown.

- Denotes one inch spaces on border line of original tracing.

MARY J. WEST HRS No 4 - LEONARD HART - PLEAS-MOUNTAIN