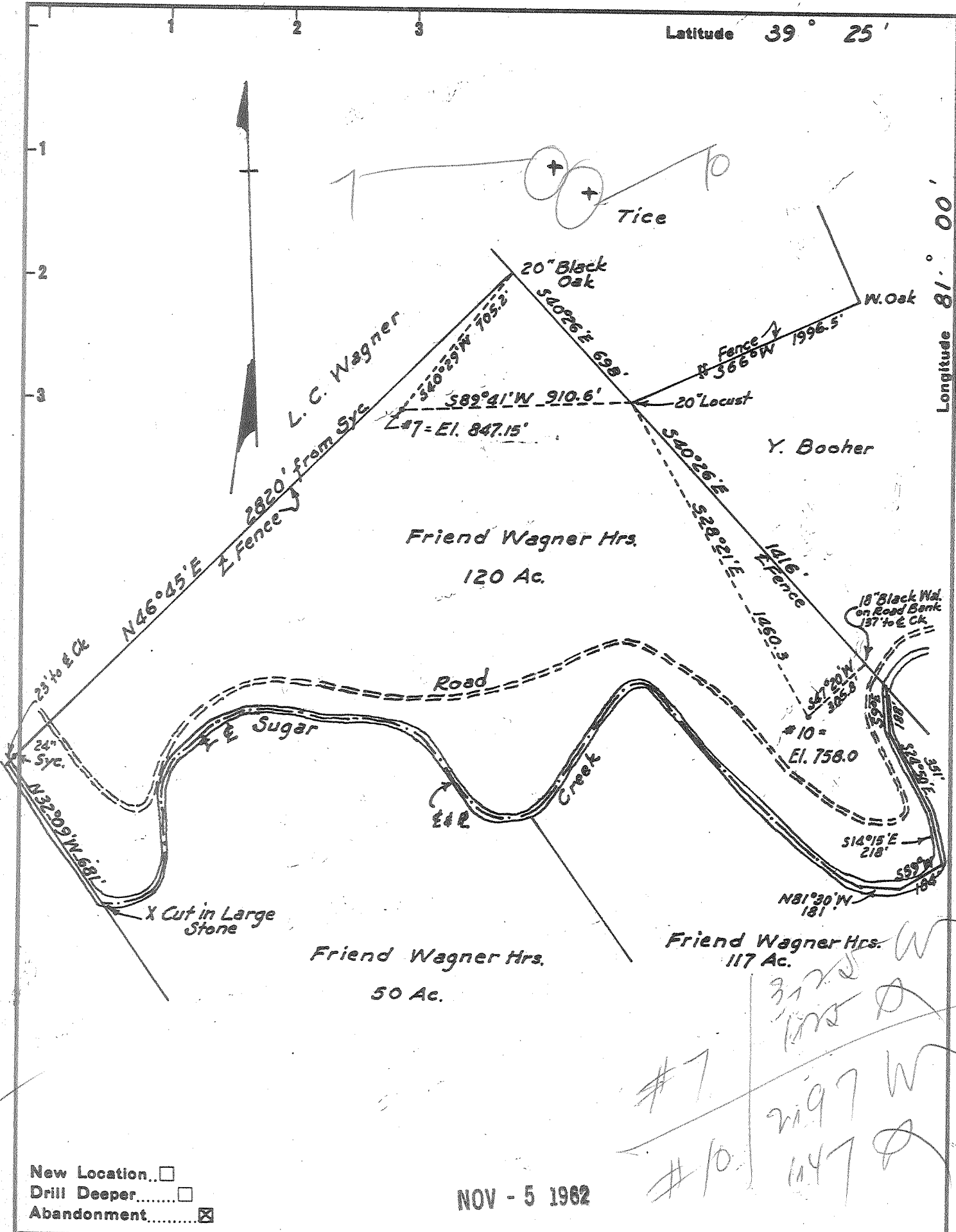


Latitude 39° 25'

Longitude 81° 00'



New Location...
 Drill Deeper.....
 Abandonment.....

NOV - 5 1962

Company Leonard Hart
 Address 702-2nd St., St. Marys, W. Va.
 Farm Friend Wagner Hrs.
 Tract _____ Acres 120 Lease No. _____
 Well (Farm) No. 7 & 10 Serial No. _____
 Elevation (Spirit Level) #7=847.15 #10=758.0
 Quadrangle St. Marys
 County Pleasants District Union
 Engineer H. F. Johnston
 Engineer's Registration No. 2492
 File No. _____ Drawing No. _____
 Date Oct. 1, 1962 Scale 1"=500'

STATE OF WEST VIRGINIA
 DEPARTMENT OF MINES
 OIL AND GAS DIVISION
 CHARLESTON

WELL LOCATION MAP

FILE NO. PLEAS-1032-A-#7
PLEAS-1037-A-#10

+ Denotes location of well on United States Topographic Maps, scale 1 to 62,500, latitude and longitude lines being represented by border lines as shown.

- Denotes one inch spaces on border line of original tracing.

FRIEND WAGNER BEIRTS DR 7 & 10 LEONARD HART PLEAS-1032-A-#7 - 1037-A