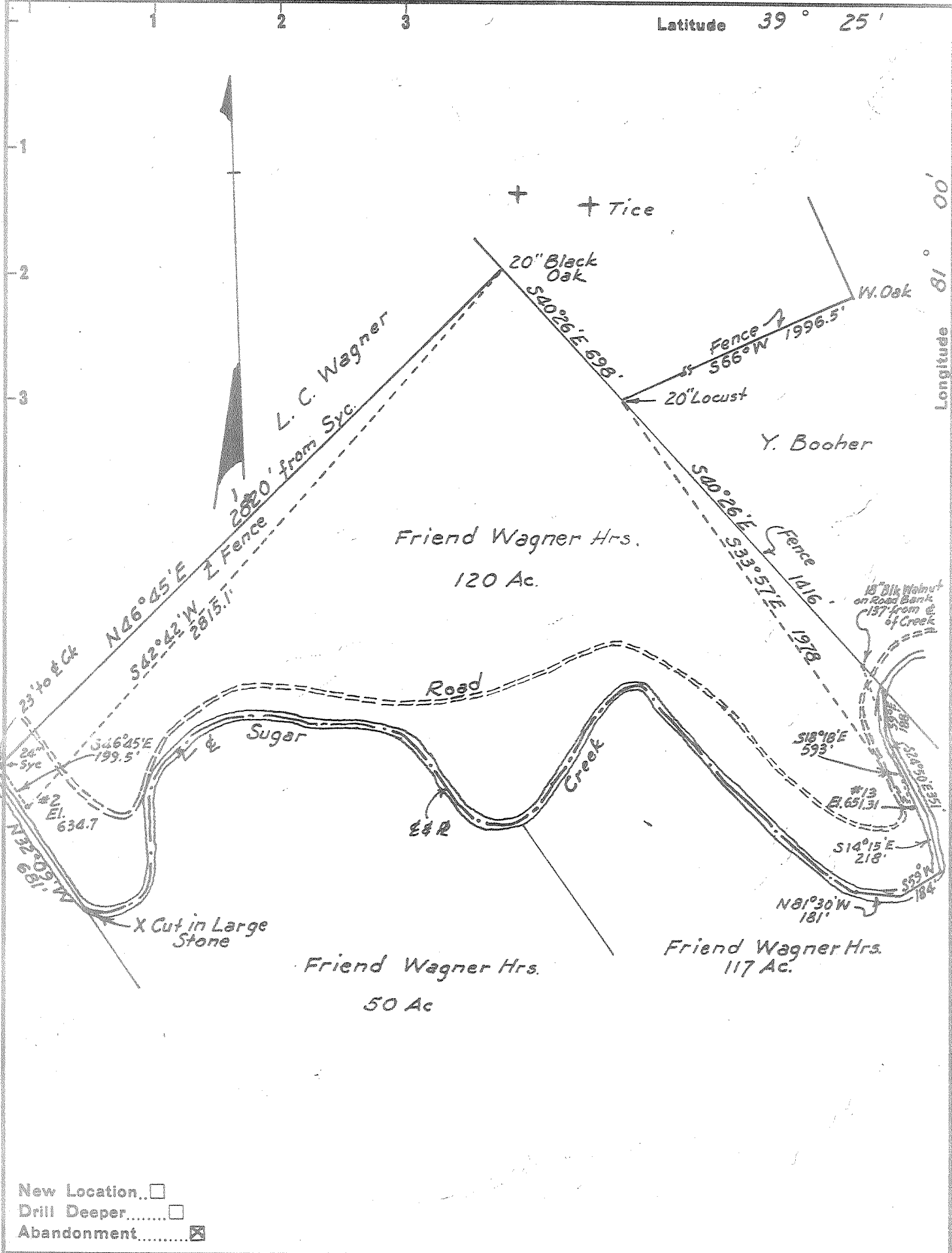


Latitude 39° 25'

Longitude 81° 00'



New Location...
 Drill Deeper.....
 Abandonment.....

Company Leonard Hart
 Address 702-2nd St., St. Marys, W. Va
 Farm Friend Wagner Hrs.
 Tract _____ Acres 120 Lease No. _____
 Well (Farm) No. 2 & 13 Serial No. _____
 Elevation (Spirit Level) #2=634.7 #13=651.31
 Quadrangle St. Marys
 County Pleasants District Union
 Engineer H. F. Johnston
 Engineer's Registration No. 2492
 File No. _____ Drawing No. _____
 Date Oct. 1, 1962 Scale 1"=500'

STATE OF WEST VIRGINIA
 DEPARTMENT OF MINES
 OIL AND GAS DIVISION
 CHARLESTON

WELL LOCATION MAP

FILE NO. PLEAS-1029-A-#2
PLEAS-1036-A-#13

+ Denotes location of well on United States Topographic Maps, Scale 1 to 62,500, latitude and longitude lines being represented by border lines as shown.
 - Denotes one inch spaces on border line of original tracing.