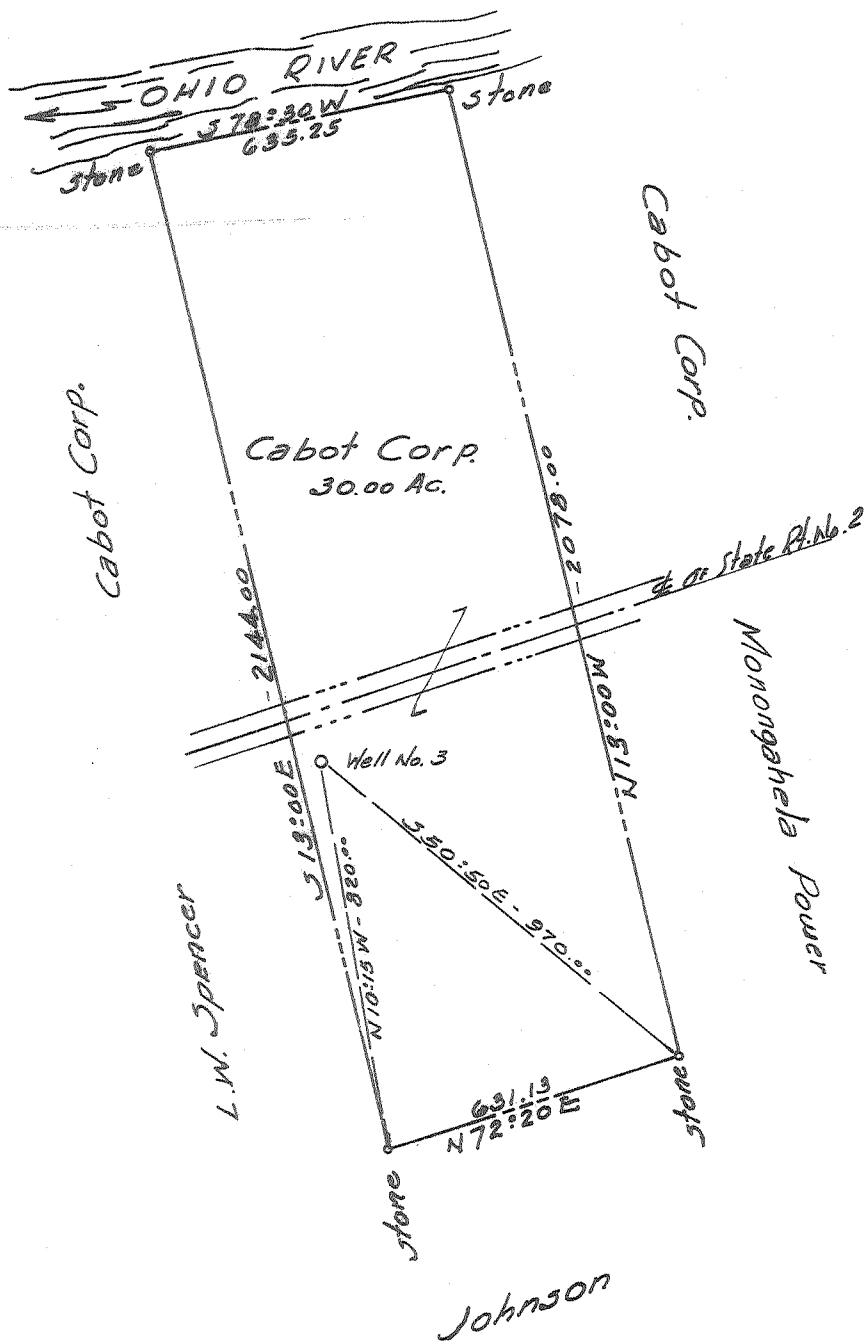


LATITUDE 39 ° 25 '

LONGITUDE 81 ° 20'



CERTIFICATE

"I, the undersigned, hereby certify that this map is correct to the best of my knowledge and belief and shows all the information required by paragraph 6 of the rules and regulations of the oil and gas section of the mining laws of West Virginia."
 Minimum degree of accuracy is one part in 200

Signed Ray Boston #3204

- NEW LOCATION
- RECONDITION
- DRILL DEEPER
- ABANDONMENT

COMPANY CABOT CORPORATION
 ADDRESS CHARLESTON, W.VA.
 FARM CABOT CORP. (HAGUE #3)
 MAP _____ ACRES 30.00 LEASE NO. _____
 WELL (FARM) NO. HAGUE No. 3 SERIAL NO. _____
 ELEVATION (SPIRIT LEVEL) 648.0
 QUADRANGLE MARIETTA - C
 COUNTY PLEASANTS DISTRICT GRANT
 POINT OF PROVEN ELEVATION U.S.G.S. Elev. 613.0 B. & O. R.R. BRIDGE PIER
 FILE NO. _____ DRAWING NO. _____
 DATE DEC. 12 1966 SCALE 1" = 400'

STATE OF WEST VIRGINIA
 DEPARTMENT OF MINES
 OIL AND GAS DIVISION
 CHARLESTON
 WELL LOCATION MAP

FILE NO. PEAS-1071-A

+ DENOTES LOCATION OF WELL ON UNITED STATES TOPOGRAPHIC MAPS. SCALE 1 TO 62,500. LATITUDE AND LONGITUDE LINES BEING REPRESENTED BY BORDER LINES AS SHOWN.

- DENOTES ONE INCH SPACES ON BORDER LINE OF ORIGINAL TRACING.