

Company ATLANTIC SEABOARD CORP.  
 Address CHARLESTON W.VA.  
 Farm U.S.A. DEPARTMENT OF INTERIOR  
 Tract 52 Acres 1182 A<sup>s</sup> Lease No. BLM.A-072923  
 Well (Farm) No. \_\_\_\_\_ Serial No. 7459  
 Elevation (Spirit Level) 3808.07'  
 Quadrangle SPRUCE KNOB, W.VA. - VA. Sinks of Bands  
 County POCAHONTAS District GREEN BANK  
 Engineer Sybert R. Ferrell  
 Engineer's Registration No. \_\_\_\_\_  
 File No. 164-83 Drawing No. \_\_\_\_\_  
 Date JUNE 15, 1965 Scale 1" = 1320'

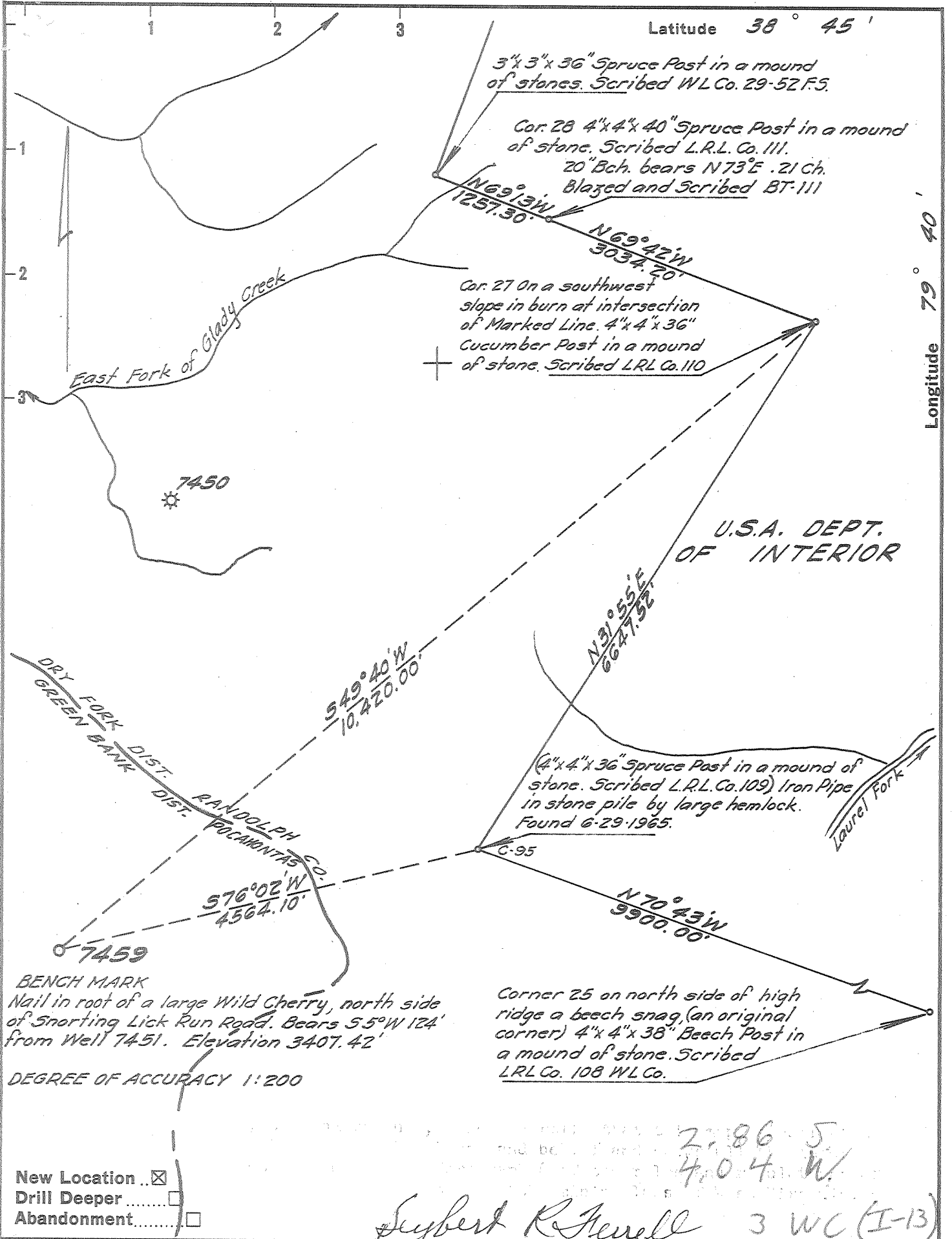
STATE OF WEST VIRGINIA  
 DEPARTMENT OF MINES  
 OIL AND GAS DIVISION  
 CHARLESTON

**WELL LOCATION MAP**  
 FILE NO. Poe-24

+ Denotes location of well on United States Topographic Maps, scale 1 to 62,500, latitude and longitude lines being represented by border lines as shown.

- Denotes one inch spaces on border line of original tracing.

DEEP WELL



Latitude 38° 45'

Longitude 79° 40'

U.S.A. DEPT. OF INTERIOR

New Location   
 Drill Deeper   
 Abandonment

Seybert R Ferrell 3 WC (I-13)

Company ATLANTIC SEABOARD CORP.  
 Address CHARLESTON W.VA.  
 Farm U.S.A. DEPARTMENT OF INTERIOR  
 Tract 52 Acres 1182 A<sup>s</sup> Lease No. BLM-A-022923 PT. AS. 700  
 Well (Farm) No. \_\_\_\_\_ Serial No. 7459  
 Elevation (Spirit Level) 3808.07'  
 Quadrangle SPRUCE KNOB, W.VA. - VA. - NW  
 County POCAHONTAS District GREEN BANK  
 Engineer Seybert R Ferrell  
 Engineer's Registration No. \_\_\_\_\_  
 File No. 164-83 Drawing No. \_\_\_\_\_  
 Date JUNE 15, 1965 Scale 1" = 1320'

STATE OF WEST VIRGINIA  
 DEPARTMENT OF MINES  
 OIL AND GAS DIVISION  
 CHARLESTON

WELL LOCATION MAP  
 FILE NO. Poe-24

+ Denotes location of well on United States Topographic Maps, scale 1 to 62,500, latitude and longitude lines being represented by border lines as shown.

- Denotes one inch spaces on border line of original tracing.

K&E 158 IMPERIAL TRACING CLOTH T.M. 80046  
 Samples 225700-6850' for gas storage 9-0 0 Deep Well



STATE OF WEST VIRGINIA  
DEPARTMENT OF MINES  
OIL AND GAS DIVISION

Rotary   
Spudder   
Cable Tools   
Storage

12-15-65  
LJ

Quadrangle Spruce Knob

WELL RECORD

Permit No. POC-27

Oil or Gas Well Gas Storage  
(KIND)

Company Atlantic Seaboard Corporation  
Address P. O. Box 1273 Charleston, W. Va. 25325  
Farm U.S.A. Dept. of Interior Tr. #26 Acres 1182  
Location (waters) Snorting Lick Run  
Well No. X-77-7459 Elev. 3808.07'  
District Greenbank County Pocahontas, W. Va.  
The surface of tract is owned in fee by \_\_\_\_\_  
Address \_\_\_\_\_  
Mineral rights are owned by Dept. of Interior  
Address Washington, D. C.

| Casing and Tubing | Used in Drilling        | Left in Well | Packers        |
|-------------------|-------------------------|--------------|----------------|
| Size              |                         |              | Kind of Packer |
| 16                |                         |              |                |
| 13 3/8            | 32' Cemented to surface |              |                |
| 9-5/8"            | 1494'                   | " "          | Size of        |
| 7"                | 6564'                   | " "          | Depth set      |
| 5 3/16            |                         |              |                |
| 4 1/2             |                         |              |                |
| 3                 |                         |              | Perf. top      |
| 2 3/8             |                         | 6852'        | Perf. bottom   |
| Liners Used       |                         |              | Perf. top      |
|                   |                         |              | Perf. bottom   |

Drilling commenced Aug. 13, 1965  
Drilling completed Oct. 4, 1965  
Date Shot \_\_\_\_\_ From \_\_\_\_\_ To \_\_\_\_\_  
With \_\_\_\_\_  
Open Flow 10ths Water in \_\_\_\_\_ Inch  
10ths Merc. in \_\_\_\_\_ Inch  
Volume 6,730,000 - Oriskany Cu. Ft.  
Rock Pressure 1735 lbs. 72 hrs.  
Oil \_\_\_\_\_ bbls., 1st 24 hrs.  
WELL ACIDIZED (DETAILS) \_\_\_\_\_  
WELL FRACTURED (DETAILS) \_\_\_\_\_

Attach copy of cementing record.  
CASING CEMENTED \_\_\_\_\_ SIZE \_\_\_\_\_ No. Ft. \_\_\_\_\_ Date \_\_\_\_\_  
Amount of cement used (bags) \_\_\_\_\_  
Name of Service Co. \_\_\_\_\_  
COAL WAS ENCOUNTERED AT \_\_\_\_\_ FEET \_\_\_\_\_ INCHES  
\_\_\_\_\_ FEET \_\_\_\_\_ INCHES  
\_\_\_\_\_ FEET \_\_\_\_\_ INCHES

RESULT AFTER TREATMENT (Initial open Flow or bbls.) \_\_\_\_\_  
ROCK PRESSURE AFTER TREATMENT \_\_\_\_\_ HOURS \_\_\_\_\_  
Fresh Water 80' Feet \_\_\_\_\_ Salt Water \_\_\_\_\_ Feet \_\_\_\_\_  
Producing Sand \_\_\_\_\_ Depth \_\_\_\_\_

Gas Storage Well

| Formation            | Color | Hard or Soft | Top   | Bottom | Oil, Gas or Water                     | Depth                  | Remarks |
|----------------------|-------|--------------|-------|--------|---------------------------------------|------------------------|---------|
| Sandstone & Shale    |       |              | 0     | 5979   | Fresh Water                           | 80'                    |         |
| Tully Limestone      |       |              | 5979  | 6000   |                                       |                        |         |
| Marcellus Shale      |       |              | 6000  | 6293   | Gas                                   | 6592' 28/10 W 2" 223 M |         |
| Metabentonite at     |       |              |       | 6293   |                                       |                        |         |
| Onondaga Limestone   |       |              | 6293  | 6347   | When drilling complete                | all gas gauged         |         |
| Chert                |       |              | 6347  | 6500   |                                       | 240/10 W 2" 650 M      |         |
| Cherty Shale         |       |              | 6500  | 6528   |                                       |                        |         |
| Needmore Shale       |       |              | 6528  | 6567   | Acidized with 20,000 gallons 15% Hcl, |                        |         |
| Oriskany Sandstone   |       |              | 6567  | 6781   | 8,000 gallons water overflush and     |                        |         |
| Helderberg Limestone |       |              | 6781  | 6855   | 175,000 std. cu. ft. Nitrogen.        |                        |         |
| Total Depth          |       |              | 6855' |        | Final test after acidized             | 6,730 M.               |         |

LOGS RUN:  
Gamma Ray  
Temperature  
  
6293 6567 6781  
3808 3808 3808  
2485 2759 2973

