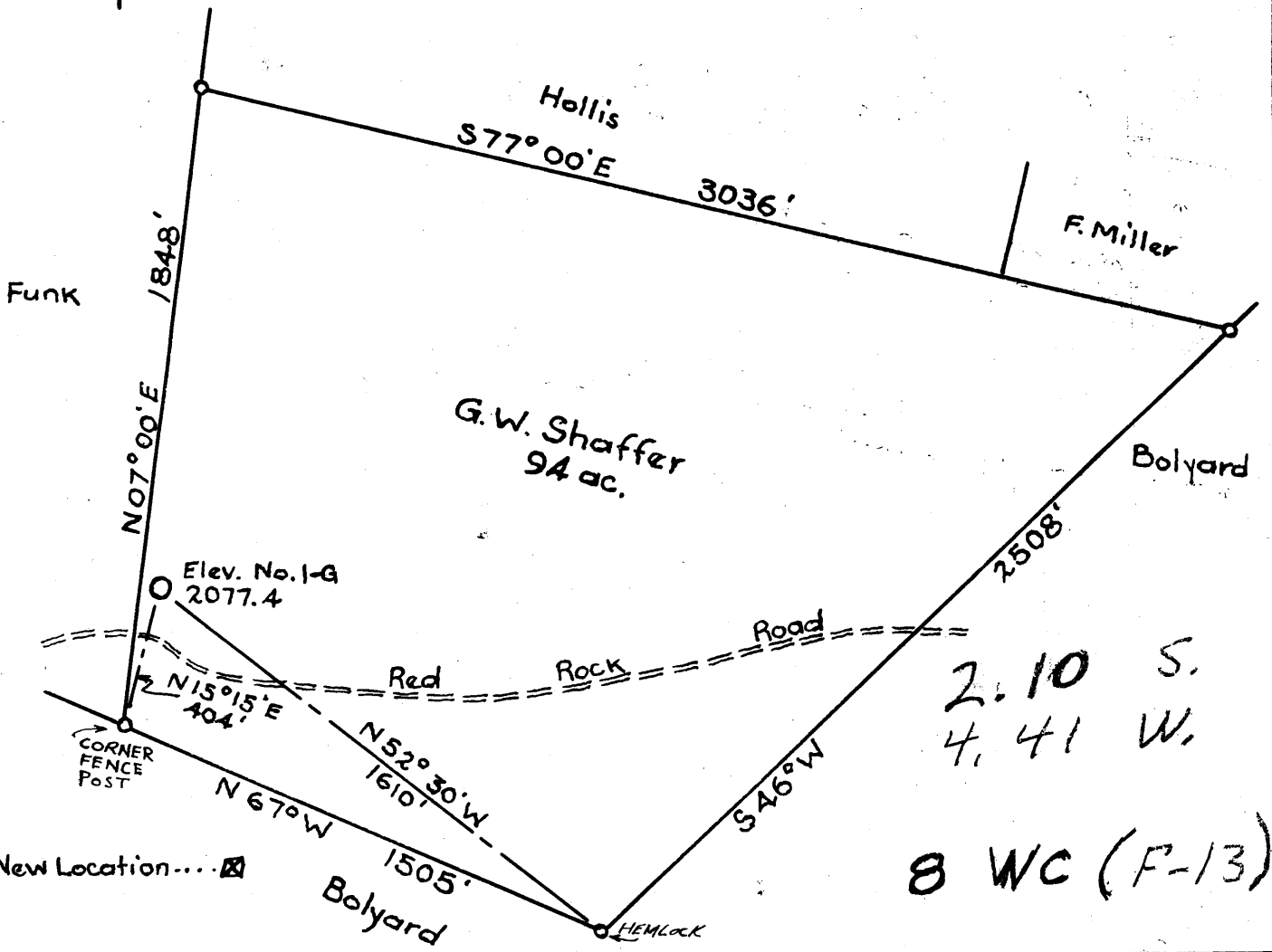


Latitude 39° 20'

Longitude 79° 35'



Company Benedum-Trees Oil Company
 Address Benedum-Trees Bldg. Pittsburgh
 Farm G.W. Shaffer
 Tract _____ Acres 94 Lease No. 83
 Well (Farm) No. 1-G
 Elevation (Spirit Level) 2077.4
 Quadrangle Kingwood SC
 County Preston District Reno
 Engineer W. B. Benedum
 Engineer's Registration No. 3450 (Ohio)
 Date 9-22-60 Scale 1"=500'

STATE OF WEST VIRGINIA
 DEPARTMENT OF MINES
 OIL AND GAS DIVISION
 CHARLESTON

WELL LOCATION MAP
 FILE NO. PRES-87

+ Denotes location of well on United States Topographic Maps, scale 1 to 62,500, altitude and longitude lines being represented by border lines as shown.

- Denotes one inch spaces on border line of original tracing.

Samplers

1-0

Deep Well



STATE OF WEST VIRGINIA
DEPARTMENT OF MINES
OIL AND GAS DIVISION

Quadrangle Kingwood

Permit No. FRES-87

WELL RECORD

Oil or Gas Well DRY
(KIND)

Company Benedum-Trees Oil Company
Address 223 4th Ave., Pittsburgh 22, Pa.
Farm G. W. Shaffer Acres 97
Location (waters) Cheat River
Well No. 1-G Elev. 2077.4'
District Reno County Preston
The surface of tract is owned in fee by G. W. Shaffer
Address Red Rock
Mineral rights are owned by G. W. Shaffer
Address Red Rock
Drilling commenced October 9, 1960
Drilling completed October 31, 1960
Date Shot From To
With
Open Flow /10ths Water in Inch
/10ths Merc. in Inch
Volume Cu. Ft.
Rock Pressure lbs. hrs.
Oil bbls., 1st 24 hrs.
WELL ACIDIZED
WELL FRACTURED

Casing and Tubing	Used in Drilling	Left in Well	Packers
Size			
16	51'	51'	Kind of Packer
10 11 3/4	649'	649'	
10			Size of
8 8 5/8	2263'	363'	
6 3/4			Depth set
5 3/16			
3			Perf. top
2			Perf. bottom
Liners Used			Perf. top
			Perf. bottom

CASING CEMENTED 8 5/8 and 11 3/4 SIZE No. Ft. Date

COAL WAS ENCOUNTERED AT FEET INCHES
FEET INCHES FEET INCHES
FEET INCHES FEET INCHES

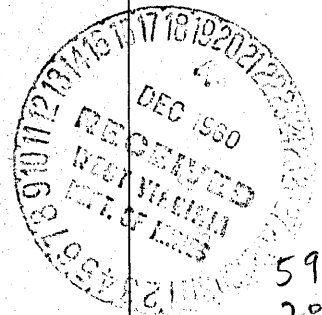
RESULT AFTER TREATMENT

ROCK PRESSURE AFTER TREATMENT

Fresh Water 1000 Feet Salt Water 6055 Feet

Formation	Color	Hard or Soft	Top	Bottom	Oil, Gas or Water	Depth	Remarks
Shale	Red	Soft	0	87			
Sand	Yellow	Soft	87	110	Dry		
Shale	Red & Gray	Soft	110	405			
Shale	Gray	Soft	405	520			
Sand	Clear	Hard	520	560	Dry		
Shale	Gray	Soft	560	745			
Sand	Clear	Hard	745	770			
Shale	Lt. Gray	Soft	770	830			
Sand	Yellow	Soft	830	920	Dry		
Silt	Gray	Soft	920	980			
Sand	Clear	Hard	980	1010	1000' - Fresh water		-Very little
Shale	Gray	Soft	1010	2200			
Sand & Shale	Lt. Gray	Hard	2200	2250	Sandy		
Shale	Gray	Soft	2250	2720			
Shale	Tan	Soft	2720	3110			
Shale	Dk. Gray	Soft	3110	4225			
Shale	Gray	Soft	4225	5205			
Shale	Tan-Black	Soft	5205	5230			
Shale	Dk. Gray	Soft	5230	5400	Sandy		
Shale	Dk. Brown	Soft	5400	5480			
Shale & Lime	Gray	Hard	5480	5520			
Shale	Black	Soft	5520	5540			
Lime & Shale	Lt. Gray	Hard	5540	5570	Tully Lime		
Shale	Dk. Gray	Soft	5570	5590	Limey		
Shale	Dk. Gray to						
	Dk. Brown	Soft	5590	5980			
Lime & Shale	Brown	Hard	5980	6023	Onondaga		
Chert	Lt. Blue	Very Hard	6023	6030			
Chert	Clear	Hard	6030	6060	Salt Water	6055	Chert is fractured-not faulted

TOTAL DEPTH 6060' (over)



5980
2077
3900