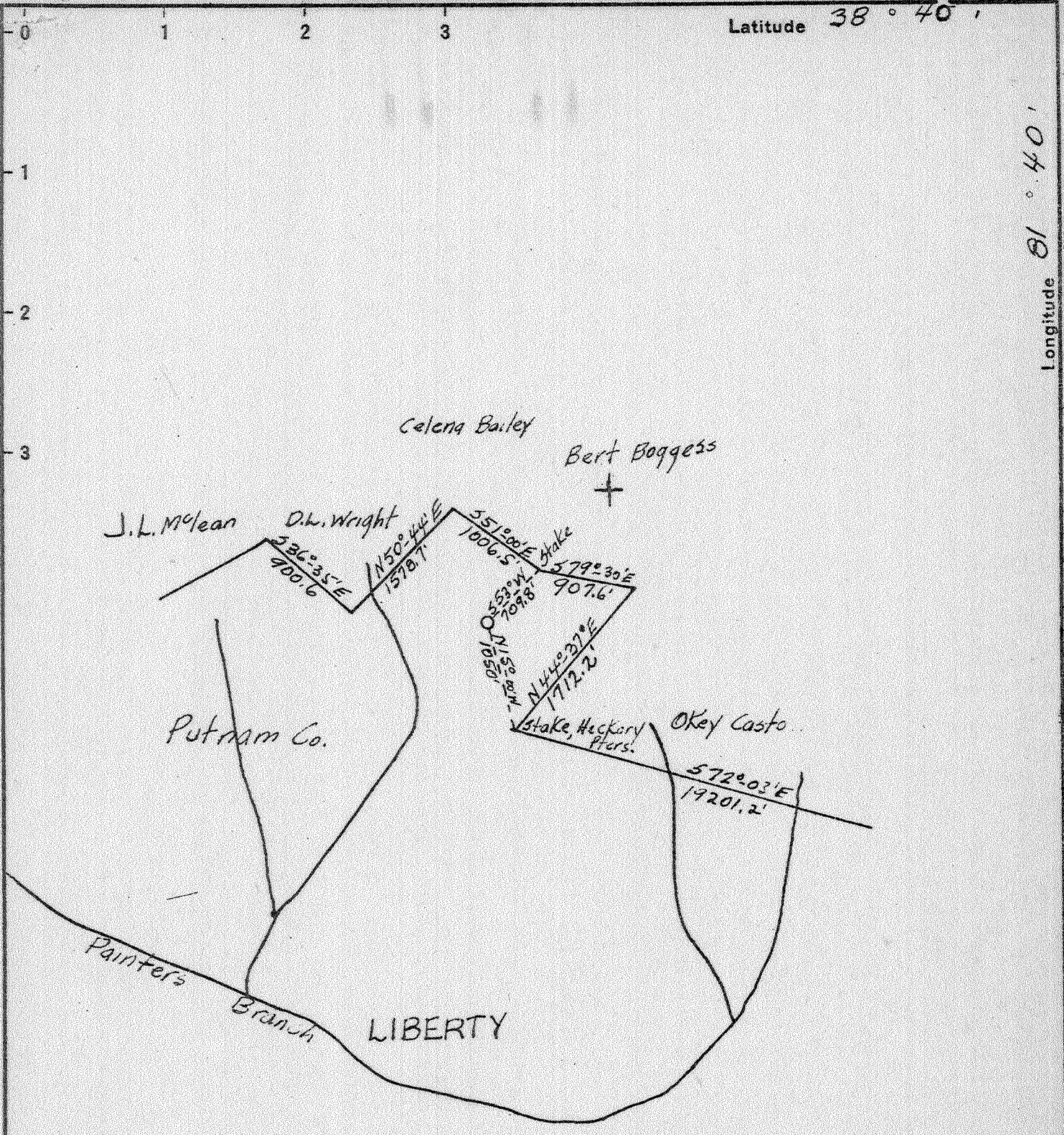


4 M

P



PLUMBED 12-17-41

ABD.
11/11

3.50 S.
3.25 W.

New Location X
 Drill Deeper
 Abandonment

Vol. XVII, p. 650

4 WC (I-5)

Company Godfrey L. Cabot, Inc.
 Address 600 Union Bldg, Charleston, W.Va.
 Farm Putnam Co.
 Tract Part 22,000 Ac Acres Lease No. 3464
 Well (Farm) No. 21 Serial No. 989
 Elevation (Spirit Level) 943.8
 Quadrangle Kenna ~~W.C.~~ - W.C.
 County Putnam District Union
 Engineer Charles Sturm
 Engineer's Registration No. 975
 File No. Drawing No.
 Date 6/10/41 Scale 1" = 1320'

STATE OF WEST VIRGINIA
 DEPARTMENT OF MINES
 OIL AND GAS DIVISION
 CHARLESTON

WELL LOCATION MAP
 FILE NO. PUT-120-P

+ Denotes location of well on United States Topographic Maps, scale 1 to 62,500, latitude and longitude lines being represented by border lines as shown.

- Denotes one inch spaces on border line of original tracing.

Deep Well

WEST VIRGINIA DEPARTMENT OF MINES
OIL & GAS DIVISION
W E L L R E C O R D

Permit No. Put-120

Company
Address
Farm
Location
Well No
District
Surface
Commenced
Completed
Shot
Volume
Soft Water
Salt Water

Godfrey L. Cabot, Inc
Charleston, W. Va.
Putnam Company Acres

21 -serial 989 Elev. 944(G)
Union Putnam County

7-23-41
11-6-41

1050⁰ 2 blrs. pr. hr.; 1280⁰ Fresh 4 blrs.
1730-35 Hole Full---Water level 438⁰ from top

Dry Hole
Casing & Tubing
10" 925 --
8" 2160 --
7" 5021 --
13 3/8" casing shoe
8 5/8x10 1/2" D.H. Packer
7" Sp. Orisk. D.H. Packer
40 sacks aquagel. 200#
fibertex

Soil	Red	0	15	Shale	Br	4115	4160
Sand	Gr	15	55	Slate		4160	4210
Red Rock		55	70	Shale	Br	4210	4325
Slate&Sand	Gr	70	155	Slate		4325	4450
Red Rock		155	190	Slate	Br	4450	4475
Slate&Shells	Dk	190	240	Slate		4475	4762
Red Rock		240	250	Shale	Br	4762	5011
Slate&Shells	Gr	250	280	Corniferous		5011	5100SL
Red Rock		280	330	Oriskany		5100	5128
Lime	Dk	330	355	Oriskany Lime		5128	5144
Red Rock	Pink	355	470	Oriskany Sand		5141	5156
Slate&Shells	Gr	470	510	Oriskany Lime	Heed	5156	5216
Red Rock		510	530				
Lime	Dk	530	545				
Red Rock		545	555				
Slate&Shells	Dk	555	577				
Red Rock		577	637				
Sand	Wh	637	724				
Red Rock		724	780				
Slate&Shells	Dk	780	856				
Lime	Dk	856	865				
Red Rock		865	873				
Red Rock		873	918				
Sand	Wh	918	940				
Slate	Dk	940	974				
Pink Slate		974	978				
Lime	Dk	978	992				
Slate	Dk	992	1000				
Sand	Wh	1000	1063				
Slate	Wh	1063	1105				
Lime		H 1105	1125				
Slate		S 1125	1190				
Sand		S 1190	1225				
Slate		S 1225	1260				
Sand		S 1260	1330				
Shale	Dk	1330	1370				
Sand		1370	1395				
Slate		1395	1500				
Lime&Shale		1500	1516				
Slate&Shells		1516	1570				
Salt Sand		H 1570	1920				
Little Lime		H 1920	1940				
Slate		S 1940	1942				
Dig Lime		H 1942	2081-Top D. Lime 5011 S.L.				
Sand&Slate		S 2081	2096				
Injun Sand		2096	2155-Top Oriskany 5100 ⁰				
Lime		2155	2164				
Slate&Shell		2164	2567				
Berca		2567	2589-Gas 2568				
Slate&Shell		2589	3450				
Brown Shale		3450	3490				
Slate		3490	4115				

Gas 5111 2/10 W 1/2" orifice ; 2.7 MCF

5100

5011	5156
944	944
<hr/> 4067	<hr/> 212