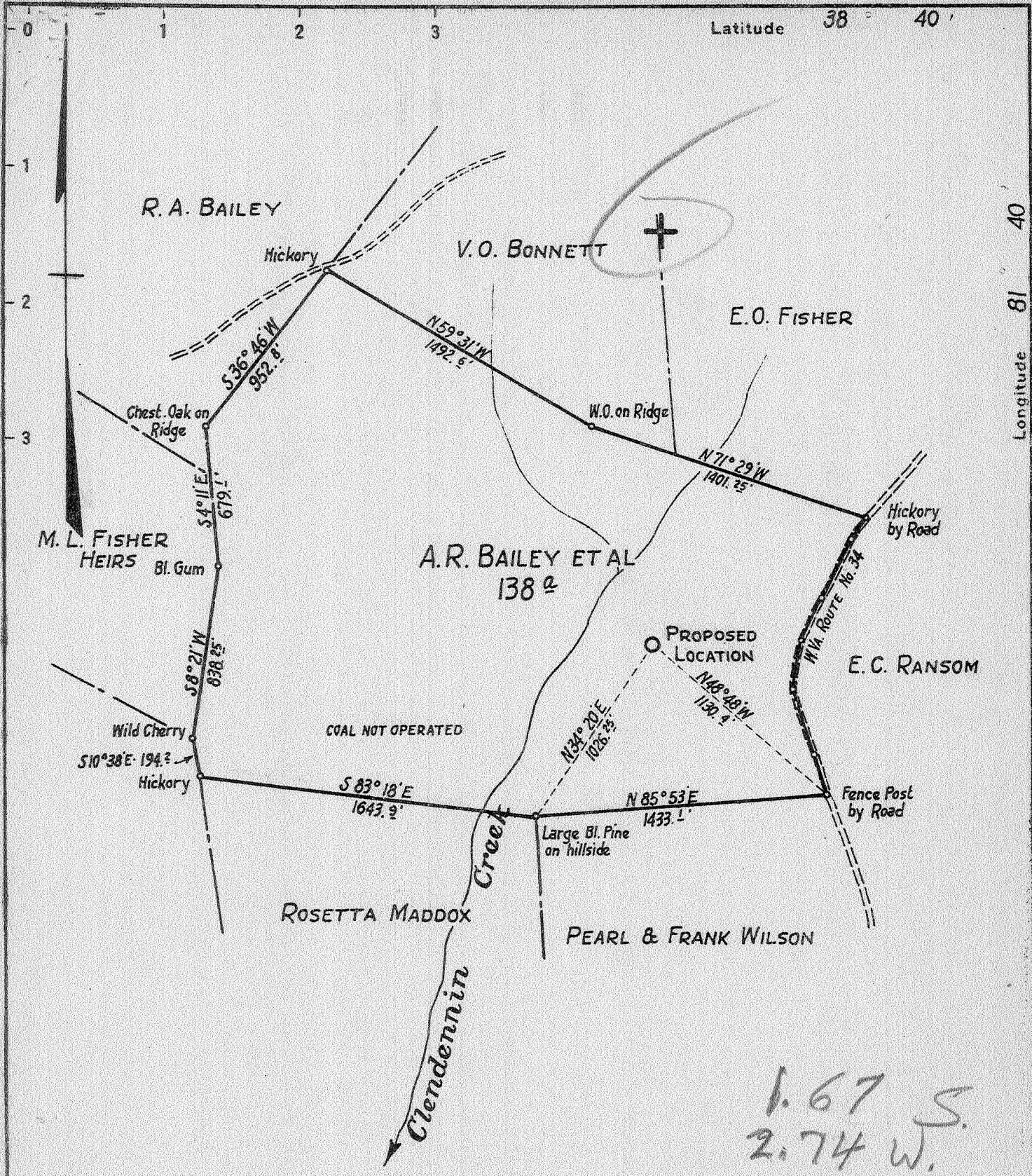


P



1.67 S.
2.74 W.

New Location.
 Drill Deeper.....
 Abandonment.....

Vol. XVI, P. 645

4 NC (I-5)

Company WEST VIRGINIA GAS CORPORATION
 Address P.O. Box 1433 CHARLESTON, W. VA.
 Farm A. R. BAILEY ET AL
 Tract 260^{ac} Acres CONSOLIDATION Lease No. 0V471-2-3
 Well (Farm) No. ONE Serial No. 077
 Elevation (Spirit Level) 948.9
 Quadrangle KENNA ~~NEW~~ - W.C.
 County PUTNAM District UNION
 Engineer W. S. GRAVELY
 Engineer's Registration No. _____
 File No. 3 Drawing No. WO493
 Date OCT. 9, 1942. Scale 1" = 660

STATE OF WEST VIRGINIA
 DEPARTMENT OF MINES
 OIL AND GAS DIVISION
 CHARLESTON

WELL LOCATION MAP
 FILE NO. PUT-219

+ Denotes location of well on United States Topographic Maps, scale 1 to 62,500, latitude and longitude lines being represented by border lines as shown.
 - Denotes one inch spaces on border line of original tracing.

6-6-1942

Deep Well N

WEST VIRGINIA DEPARTMENT OF MINES
OIL & GAS DIVISION
W E L L R E C O R D

Permit No. Put 219
Kenna Quad.

Gas Well
CASING & TUBING

Company	West Virginia Gas Corp.			
Address	801 Union Bldg., Chas., W.Va.	13	24'	24'
Farm	A.R. Bailey et al Acres 260 (Consl)	10 $\frac{3}{4}$	766'	11 0
Location	Clendenin Creek	8 5/8	1064'	4 564'8
Well No	1 Ser. O-77	Elev. 948.9	7	2256' 0
District	<u>Union</u> Putnam County	5 $\frac{1}{2}$	5121'	5121'
Surface	A.R. Bailey, Liberty, W.Va.			
Mineral	Same			
Commenced	11-2-42			12 bags aquagel behind
Completed	2-5-43			10 $\frac{3}{4}$ " pipe; 10 bags
Date shot	2-5-43	Depth 5152 to 5162		aquagel bh. 7"; 10 bags
Open Flow	4/10ths M in 7" 22#			" " 5 $\frac{1}{2}$ "; 10
Volume	3,181 MCF			bags cement bh. 5 $\frac{1}{2}$ ".
Fresh Water	682' 5 blrs.; 1100'; 1710'			

Surface	0	10
Red Rock	10	140
Sand	140	190
Red Rock	190	240
Blue Slate	240	340
Red Rock	340	670
Sand	670	685
Slate	685	695
Red Rock	695	740
Sand	740	770
Slate	770	825
Red Rock	825	840
Slate & Shells	840	940
Red Rock	940	955
Slate & Shells	955	985
Sand	985	1000
Slate & Shells	1000	1055
Sand	1055	1190
Slate	1190	1290
Sand	1290	1310
Slate & Shells	1310	1675
- Salt Sand	1675	1940
- Little Lime	1940	1965
- Slate	1965	1968
- Pig Lime	1968	2120
Slate	2120	2125
- Big Injun Sand	2125	2170
Slate	2170	2182
- Sand	2182	2200
- Sand	2200	2248
Black Lime	2248	2390
Slate & Shells	2390	2600
- Berea Grit	2600	2620
Slate & Shells	2620	4250
Brown Shale	4250	4390
White Shale - 210	4390	4490
Brown Shale	4490	4515
White Shale	4515	4770
Brown Shale	4770	5057
- Corniferous Lime	5057	5149
- Oriskany	5149	5177
TOTAL DEPTH		5177

5057
949
4108

Shot 2-5-43 with 40 qts. glycerine
A.S. 1,836 M; 1 hour A.S. 3,181 M