

- New Location
- Drill Deeper
- Abandonment

Company Quinoco Petroleum, Inc.  
 Address P.O. Box 1433 CHARLESTON, W.V. 25325  
 Farm W.H. PENNINGTON ET AL  
 Tract \_\_\_\_\_ Acres 208 5/8 Lease No. 0V279-283-284  
 Well (Farm) No. ONE Serial No. 514  
 Elevation (Spirit Level) 710.22  
 Quadrangle KENNA N.W. 15 / Kenma 7.5  
 County PUTNAM District UNION  
 Engineer W.S. GRAVELY  
 Engineer's Registration No. \_\_\_\_\_  
 File No. 3 Drawing No. W0530  
 Date JUNE 16, 1943. Scale 1" = 660'

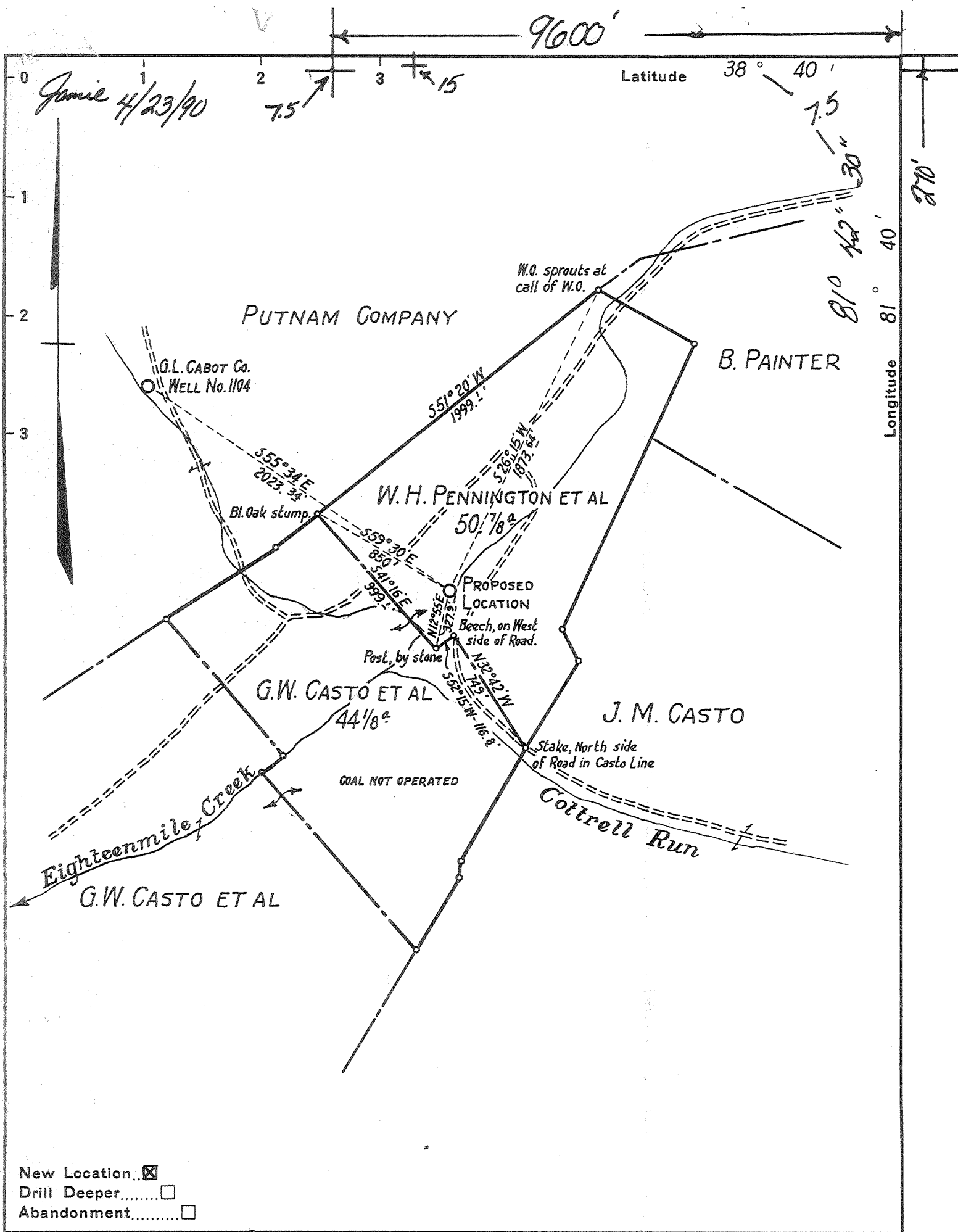
STATE OF WEST VIRGINIA  
 DEPARTMENT OF MINES  
 OIL AND GAS DIVISION  
 CHARLESTON

WELL LOCATION MAP  
 FILE NO. PUT-246-P  
47-079-0246-P- one

+ Denotes location of well on United States Topographic Maps, scale 1 to 62,500, latitude and longitude lines being represented by border lines as shown.  
 - Denotes one inch spaces on border line of original tracing.

JUL 16 1990

PUT 246-P



New Location...   
 Drill Deeper.....   
 Abandonment.....

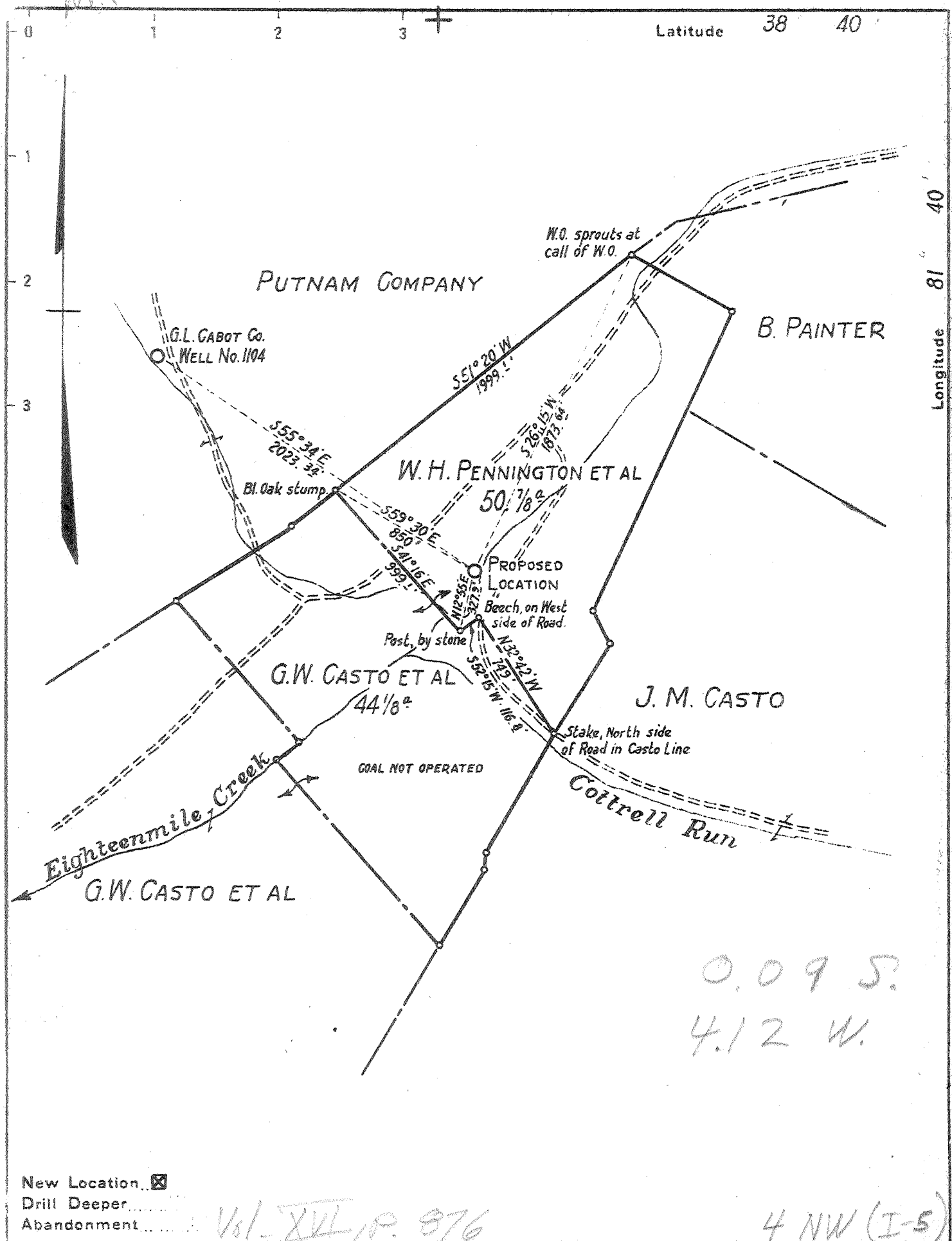
Company Quinoco Petroleum, Inc.  
 Address P.O. Box 1433 CHARLESTON, W.V. 25325  
 Farm W. H. PENNINGTON ET AL  
 Tract \_\_\_\_\_ Acres 208 5/8 Lease No. 0V279-283-284  
 Well (Farm) No. ONE Serial No. 514  
 Elevation (Spirit Level) 710.22  
 Quadrangle KENNA N.W. 15 / Kenna 7.5  
 County PUTNAM District UNION  
 Engineer W. S. GRAVELY  
 Engineer's Registration No. \_\_\_\_\_  
 File No. 3 Drawing No. W0530  
 Date JUNE 16, 1943. Scale 1" = 660'

STATE OF WEST VIRGINIA  
 DEPARTMENT OF MINES  
 OIL AND GAS DIVISION  
 CHARLESTON

WELL LOCATION MAP  
 FILE NO. PUT-246-P  
47-079-

+ Denotes location of well on United States Topographic Maps, scale 1 to 62,500, latitude and longitude lines being represented by border lines as shown. APR 27 1990  
 - Denotes one inch spaces on border line of original tracing.

P



Latitude 38 40

Longitude 81 40

PUTNAM COMPANY

B. PAINTER

W. H. PENNINGTON ET AL

G. W. CASTO ET AL

J. M. CASTO

Eighteenmile Creek  
G. W. CASTO ET AL

Cottrell Run

0.09 S.  
4.12 W.

New Location   
 Drill Deeper.....  
 Abandonment..... Vol. XVII, P. 876

4 NW (I-5)

Company WEST VIRGINIA GAS CORPORATION  
 Address P.O. Box 1433 CHARLESTON, (25) W. VA.  
 Farm W. H. PENNINGTON ET AL  
 Tract \_\_\_\_\_ Acres 208 5/8 Lease No. 0V279-283-284  
 Well (Farm) No. ONE Serial No. 514  
 Elevation (Spirit Level) \_\_\_\_\_  
 Quadrangle KENNA ~~WC~~ WC  
 County PUTNAM District UNION  
 Engineer W. S. GRAVELY  
 Engineer's Registration No. \_\_\_\_\_  
 File No. 3 Drawing No. WO 530  
 Date JUNE 16, 1943 Scale 1" = 660'

STATE OF WEST VIRGINIA  
 DEPARTMENT OF MINES  
 OIL AND GAS DIVISION  
 CHARLESTON

WELL LOCATION MAP  
 FILE NO. PUT-246

+ Denotes location of well on United States Topographic Maps, scale 1 to 62,500. latitude and longitude lines being represented by border lines as shown.

- Denotes one inch spaces on border line of original tracing.

Deep Well 1-7-58

WEST VIRGINIA DEPARTMENT OF MINES  
OIL & GAS DIVISION  
W E L L R E C O R D

Permit No. Put 246

Kenna Quad N.W.

Company

Address

Farm

Location

Well No

District

Surface

Mineral

Commenced

Completed

Date shot

Open flow

Volume

Rock Pressure

Fresh Water

Salt Water

Gas Well  
CASING & TUBING

West Virginia Gas Corp.

Box 1433, Charleston, 25, W.Va.

W.H. Pennington et al Acres 208 5/8"

Eighteen Mile Creek 16 39'4 39'4

One, Serial # 514 Elev. 710.22 13 532'10 00

Union Putnam County 10 909' 00

W.H. Pennington et al, R # 1, 8 1/2 2046' 00

Given, W.Va. 7 4847' 4487'

Same 2 3/8 4901' 4901'

7-10-43

11-8-43

11-8-43 Depth 4882 to 4892' Perf. top 4876'

with 30 qts. nitro glycerine Perf. bot 4882'

110/10ths W in 2"- 1 hr. A.S.

4, 525 MCF

17 bags aquagel and

1700#

10 bags cement

65'

behind 7" casing.

1485'

Surface	0	22
Red Rock	22	63
Sand	63	75
Red Rock	75	100
Slate & Shells	100	145
Red Rock	145	165
Sand	165	187
Red Rock	187	204
Slate & Shells	204	250
Sand	250	285
Red Rock	285	300
Slate & Shells	300	385
Sand	385	400
Slate & Shells	400	495
Sand	495	528
Slate	528	540
Red Rock	540	617
Slate & Shells	617	650
Sand	650	676
Slate & Shells	676	876
Sand	876	912
Slate	912	1068
Sand	1068	1107
Slate	1107	1150
Sand	1150	1220
Slate & Shells	1220	1460
- Salt Sand	1460	1747
- Little Lime	1747	1773
- Big Lime	1773	1917
- Slate	1917	1920
- Injun Sand	1920	2010
Slate	2010	2027
Black Lime	2027	3035
Slate & Shells	3035	2395
- Berea Sand	2395	2410
Slate & Shells	2410	3610
Brown Shale	3610	3665
Slate & Shells	3665	3853
Brown Shale	3853	4145
Slate	4145	4480
Brown Shale	4480	4790
- Corniferous Lime	4790	4878
- Oriskany Sand	4878	4918
Total depth		4918

4790  
710  

---

4080

B.S. 20/10 W 2" 189 MCF

A.S.-1 hr.- 110/10 W 2" - 4,525 MCF