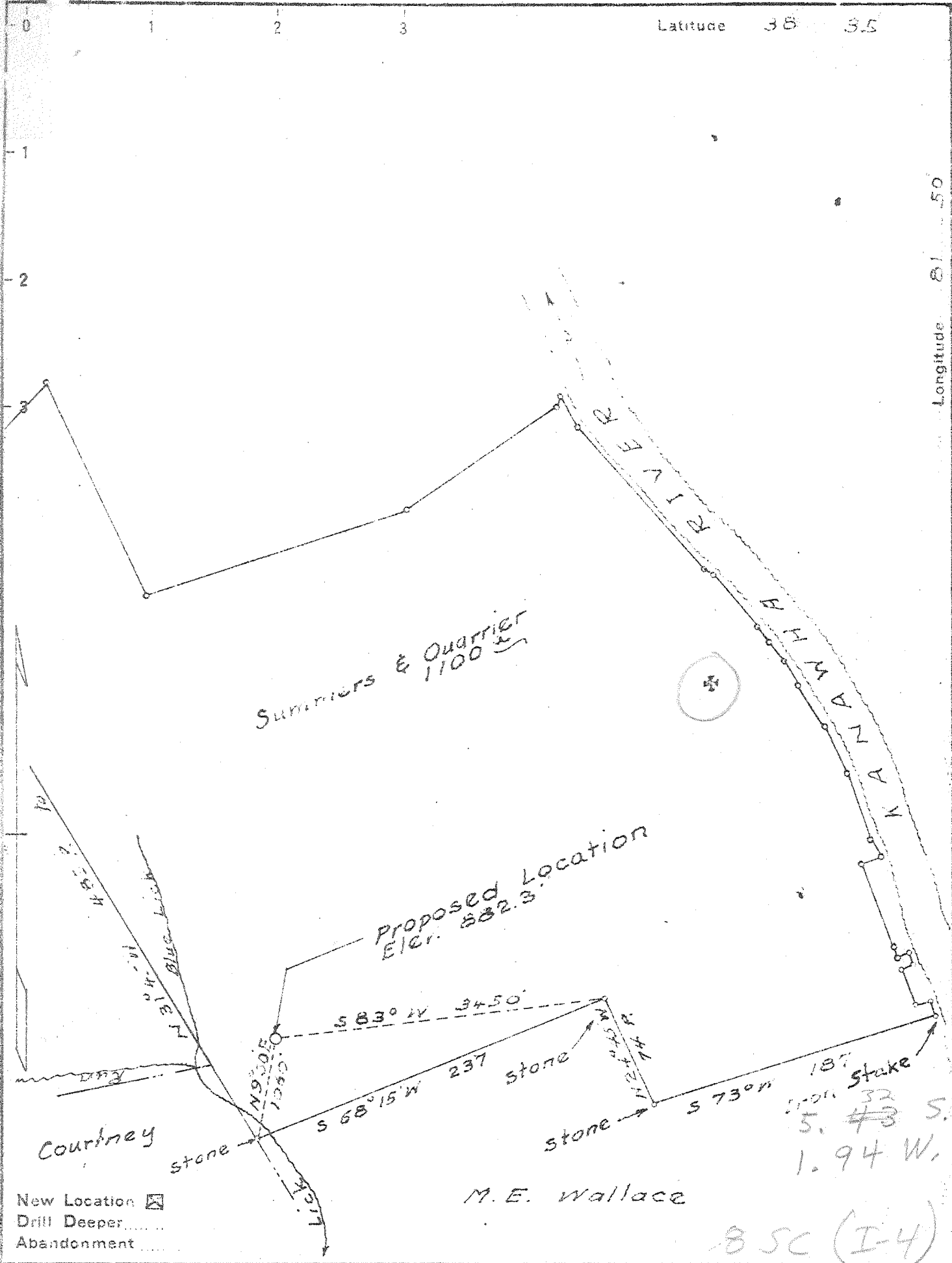


P



New Location
 Drill Deeper
 Abandonment

M. E. Wallace
 85C (I-4)

Company Godfray L. Cabot, Inc.
 Address 900 Union Bldg. Charleston, W. Va.
 Farm Summers & Quarrier
 Tract _____ Acres 1100 Lease No. 3-839
 Well (Farm) No. 1 Serial No. 1162
 Elevation (Spirit Level) 882.3'
 Quadrangle Winfield - SC
 County Futurum District Scott
 Engineer Loyd B. McDonald
 Engineer's Registration No. 640
 File No. _____ Drawing No. _____
 Date 9-2-44 Scale 1" = 1320'

STATE OF WEST VIRGINIA
 DEPARTMENT OF MINES
 * OIL AND GAS DIVISION
 CHARLESTON

WELL LOCATION MAP
 FILE NO. PUT-300

+ Denotes location of well on United States Topographic Maps, scale 1 to 62,500. latitude and longitude lines being represented by border lines as shown.

- Denotes one inch spaces on border line of original tracing

3-6-44-21/1000 Deep Well

WEST VIRGINIA DEPARTMENT OF MINES
OIL & GAS DIVISION
W E L L R E C O R D

Permit No. Put 300		Gas Well
Winfield Quad.		CASING & TUBING
Company	Godfrey L. Cabot, Inc.	
Address	Charleston, W.Va.	10 $\frac{1}{2}$ 35.75 783 783
Farm	Summers & Quarrier	8 5/8 25.55 1719 --
Location		7 24# 2045 2045
Well No.	1- ser. 1162 Elev. 882.3	
District	Scott Putnam County	10 $\frac{1}{2}$ " half cpl. Csg. shoe
Surface	#20110	8 $\frac{1}{2}$ x 10x16 Spang BHPacker
Mineral	#439120	7 x 8 $\frac{1}{2}$ x 16 Parmaco BH
Commenced	Oct. 14, 1944	Packer
Completed	Jan. 24, 1945	
Date shot	1-29-45 Depth 3814 to 4026 with 1300# Gelatin	
Open flow	B.S. 58 MCF; A.S. 13 $\frac{1}{2}$ hrs. -246 M - Brown Shale	
Volume	13 $\frac{1}{2}$ A.S. 34/10ths ? in 2"	
Rock Pressure	246 MCF	Producing Sand Record
Fresh Water	820 lbs. in 18 hrs. Shale	Brown Shale 2380-4019
Salt Water	135' 1-13" blr. per hr.	58 MCF *
	1458 Water level 400'	
	1925 Filled 800' in 20 hrs.	

Soil	0	15	Slate	1182	1192
Red Rock		15	Lime	1192	1265
Sand		25	Sand	1265	1304
Slate		35	Slate	1304	1309
Red Rock		40	Sand	1309	1348
Slate		95	Slate	1348	1390
Red Rock		107	Salt Sand	1390	1655
Lime		117	Slate	1655	1673
Sand		122	Black Lime	1673	1688
Slate		175	Pencil Cave	1688	1693
Sand		190	Black Lime	1693	1705
Slate		194	Big Lime	1705	1861
Lime		202	Injun Sand	1861	1890
Slate		219	Slate	1890	1900
Sand		240	Injun Sand	1900	1960
Slate		245	Slate & Shells	1960	2374
Sand		248	Berea Grit	2374	2400
Red Rock		256	Slate & Shells	2400	3565
Sand		305	Brown Shale	3565	3690
Red Rock		309	Slate & Shells	3690	3880
Slate		342	Brown Shale	3880	4019
Red Rock		360	Gray Shale	4019	4050
Sand		390	Slate, White	4050	4408
Red Rock		398	Brown Shale	4408	4545
Sand		441	Black Shale	4545	4583
Slate		475	Corniferous Lime	4583	4665
Red Rock		516	Oriskany Sand	4665	4676
Slate		527	Sandy Lime	4676	4684
Sand		546	Limey Sand	4684	4693
Slate		568	Lime	4693	4698
Red Rock		620	TOTAL DEPTH		4698
Slate & Shells		637	SLM 1900, 2394, 4604, 4685		
Dunkard Sand		657	Hole bridged back to 4026 with 70'		
Slate		715	porous bridge.		
Sand		725	*one type 3" duplex zero hour electric		
Slate		740	bomb used in shooting.		
Coal		759	Gas 1910' 18 MCF; 2387-2393 18 MCF, Exh.		
Slate		760	Gas 3580 show; 3897-3900 47 M Dec. to 26M		
Sand		777	4000-4007 58 M Dec. to 49 M		
Slate		785	SHALE GAS GAUGING 49 M D. drilling.		
Lime		790	Oriskany Sand. Gas 4668 Inc. O.F. to 63 M		
Slate		830	Gas 4671 Inc. O.F. to 68 M; total gas		
Sand		855	dec. to 58 M at T.D.		
Slate, B.		861	NOTE: Tools stuck in hole 70' off		
Sand		903	bottom while cleaning out and could not		
Slate		934	be recovered and Oriskany gas not shot.		
Sand		1000			
Slate, B		1042			
Sand		1135			
Slate		1140			
Sand		1150			

4583 4665 - 4693
882
3701 3783