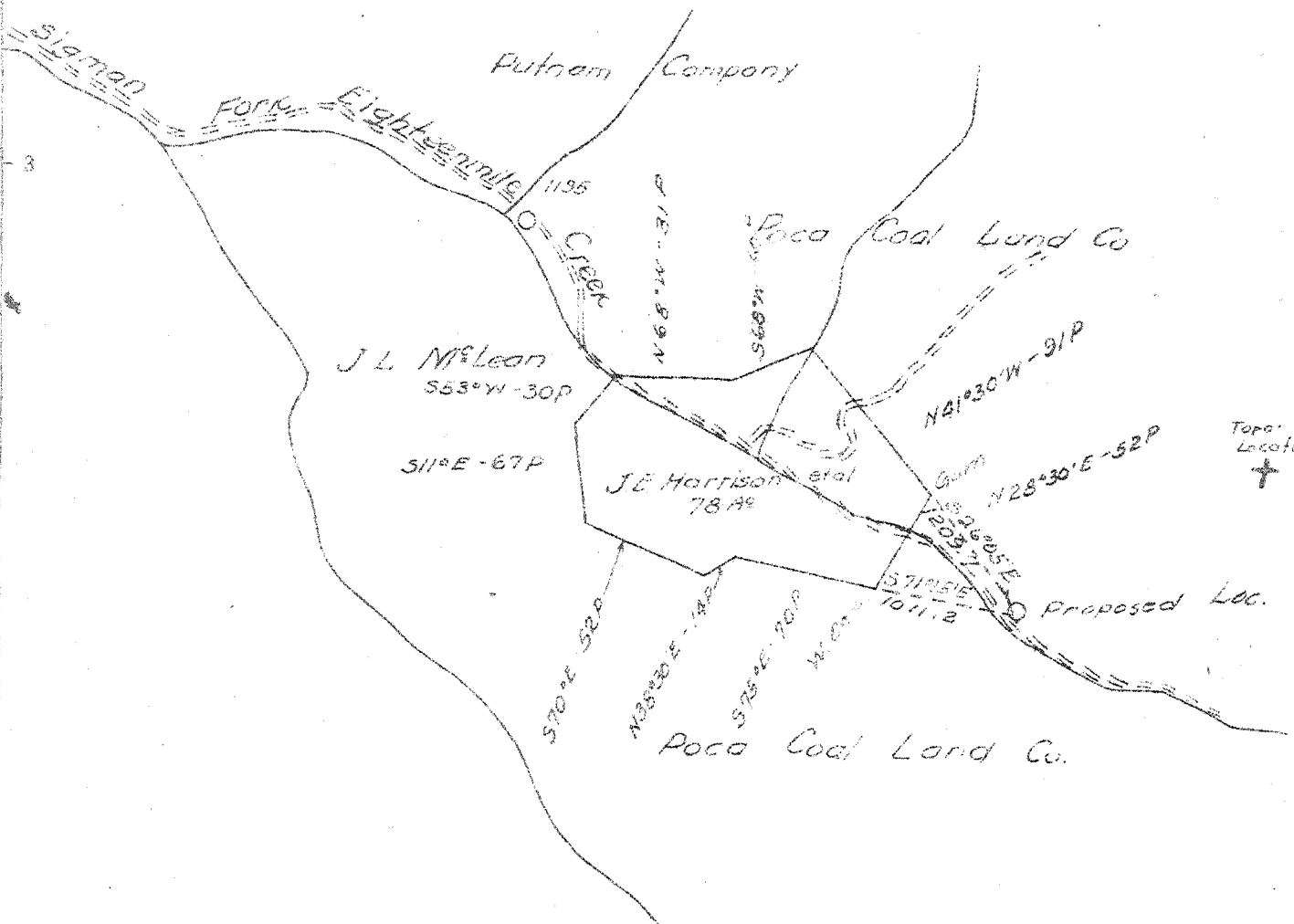


Latitude 38 40

Longitude 81 45



4.92 S.
0.41 W.

New Location X
Drill Deeper
Abandonment

6 SE (I-4)

Company Godfrey L. Cabot Inc.
 Address 900 Union Bldg. Charleston W. Va.
 Farm Poca Coal Land Co.
 Tract _____ Acres 295 Lease No. 3-466
 Well (Farm) No. 13 Serial No. 1207
 Elevation (Spirit Level) 736.52
 Quadrangle Winfield - EC
 County Putnam District Union
 Engineer Roy Croton
 Engineer's Registration No. _____
 File No. _____ Drawing No. _____
 Date 4-25-46 Scale 1" = 1320'

STATE OF WEST VIRGINIA
DEPARTMENT OF MINES
OIL AND GAS DIVISION
CHARLESTON

WELL LOCATION MAP
FILE NO. PUT-334

+ Denotes location of well on United States Topographic Maps, scale 1 to 62,500, latitude and longitude lines being represented by border lines as shown.
- Denotes one inch spaces on border line of original tracing.

Deep Well V

WEST VIRGINIA DEPARTMENT OF MINES
OIL & GAS DIVISION
W E L L R E C O R D

Permit No. Put 334

Winfield Quad.

Company

Address

Farm

Location

Well No.

District

Surface

Mineral

Commenced

Completed

Not shot

Open flow

Volume

Rock Pressure

Fresh Water

Salt Water

Godfrey L. Caboy, Inc.

Charleston, W. Va.

Poca Coal Land Co. A-

13 ser. 1207 Elev. 737

Union Putnam County

June 1, 1946

July 25, 1946

When shut in: 52/10ths M in 3" Opng.

2,524 MCF

Big Injun 746 lbs. in 3 days

30" H.F.; 240' 5 blrs. per hr.

1185' 1 blr. per hr.; 1565 7 blrs. per hr.

1600' H.F.

Gas Well
CASING & TUBING

16 12 12

13 132 132

10 1/2 350 350

8 5/8 1931 1931

8" set with anchor

packer at 1871'7.

Perforation on anchor

from 1925 to 1929.

Not shot

Clay	0	12
Sand	12	40
Red Rock	40	55
Sand	55	70
Red Rock	70	125
White Slate	125	140
Red Rock	140	160
Lime	160	180
White Lime	180	200
Red Rock	200	225
Sand	225	245
Red Rock	245	275
White Slate	275	290
Red Rock	290	340
White Slate	340	370
Red Rock	370	400
White Slate	400	422
Red Rock	422	477
White Slate	477	532
Red Rock	532	580
Slate Shells	580	690
Red Rock	690	740
Sand	740	749
Slate	749	774
Sand	774	845
Slate	845	938
White Sand	938	1114
Slate Shells	1114	1180
Sand	1180	1216
Slate, Black	1216	1300
Sand	1300	1324
White Slate	1324	1344
Sand, White	1344	1396
Slate	1396	1406
Sand	1406	1410
Slate	1410	1493
Salt Sand	1493	1685
Slate, Black	1685	1690
Sand	1690	1735
Big Lime	1735	1918
Slate, Shell	1918	1928
Big Injun	1928	
Total Depth		1931

PRODUCING SAND RECORD

Big Injun 1928 to 1931 Init. Prod.
2,524 MCF

Gas 1931 2, 524 MCF

WEST VIRGINIA DEPARTMENT OF MINES
OIL & GAS DIVISION
W E L L R E C O R D

Permit No. Put 334		Gas Well
Winfield Quad.		CASING & TUBING
Company	Godfrey L. Cabot, Inc.	
Address	Charleston, W. Va.	16 62# 12 12 Cond.
Farm	Poca Coal Land Co. A	13 48# 132 132 *
Location		10 35.75 850 850 **
Well No.	13 serial 1207 Elev. 737	8 24# 1931 -
District	Union Putnam County	7 23# 2071 2071 ***
Commenced	Dec. 9, 1947	5 1/2 17# 4873 4873 ****
Completed	Feb. 28, 1948	
Surface		* 1/2" cpl. csg. shoe
Mineral		** 10" csg. shoe
Date shot	Feb. 25, 1948 Depth 4871-4886 with 30 qts.	
Volume	B.S. 232 MCF; A.S. -30 Min. 3,663 M.	*** 7" x 8 5/8"
Rock Pressure	2,100 MCF 1625 lbs. in 16 hrs. Oriskany	B.H. Packer GLC #161 **** 5 1/2 Lead Spang B.H. Packer

DRILLED DEEPER

Old Depth	1931		
No record	1931	2403	
Slate & Shell	2403	3620	SLM 3205 Gas 3150 show only
Br. Shale	3620	3714	Gas 4873-4877 285 MCF
Blk. Lime	3714	3729	Gas 4881-4884- 422 MCF
Wh. Slate	3729	3760	
Slate Shells	3760	3856	
Shale	3856	3908	
Wh. Slate	3908	4018	
Br. Shale	4018	4130	
Wh. Slate	4130	4195	
Br. Shale	4195	4275	
Wh. Slate	4275	4455	
Br. Shale	4455	4768	
Corniferous	4768	4869	SLM 4783
Oriskany Sand	4869	4888	
Lime	4888	4893	
Total Depth		4893	

4768	4869
737	737
4031	4132

WEST VIRGINIA DEPARTMENT OF MINES
OIL & GAS DIVISION
W E L L R E C O R D

Permit No. Put 334

Winfield Quad.

Company

Address

Farm

Location

Well No.

District

Commenced

Completed

Surface

Mineral

Date shot

Volume

Rock Pressure

Godfrey L. Cabot, Inc.

Charleston, W. Va.

Poca Coal Land Co. A *45*

13 serial 1207 Elev. 737

Union Putnam County

Dec. 9, 1947

Feb. 28, 1948

Gas Well
CASING & TUBING

16	62#	12	12	Cond.
13	48#	132	132	*
10	35.75	850	850	**
8	24#	1931		-
7	23#	2071	2071	***
5 1/2	17#	4873	4873	****

* 1/2" cpl. csg. shoe

** 10" csg. shoe

Feb. 25, 1948 Depth 4871-4886 with 30 qts.

B.S. 232 MCF; A.S. -30 Min. 3,663 M. ***7" x 8 5/8"

2,100 MCF

1625 lbs. in 16 hrs. Oriskany

B.H. Packer GLC #161

**** 5 1/2 Lead Spang

B.H. Packer

DRILLED DEEPER

NOV - 8 1948

Old Depth		1931
No record	1931	2403
Slate & Shell	2403	3620
Br. Shale	3620	3714
Blk. Lime	3714	3829
Wh. Slate	3729	3760
Slate Shells	3760	3856
Shale	3856	3908
Wh. Slate	3908	4018
Br. Shale	4018	4130
Wh. Slate	4130	4195
Br. Shale	4195	4275
Wh. Slate	4275	4455
Br. Shale	4455	4768
Corniferous	4768	4869
Oriskany Sand	4869	4888
Lime	4888	4893
Total Depth		4893

SLM 3205 Gas 3150 show only
Gas 4873-4877 285 MCF
Gas 4881-4884 422 MCF

SLM 4783