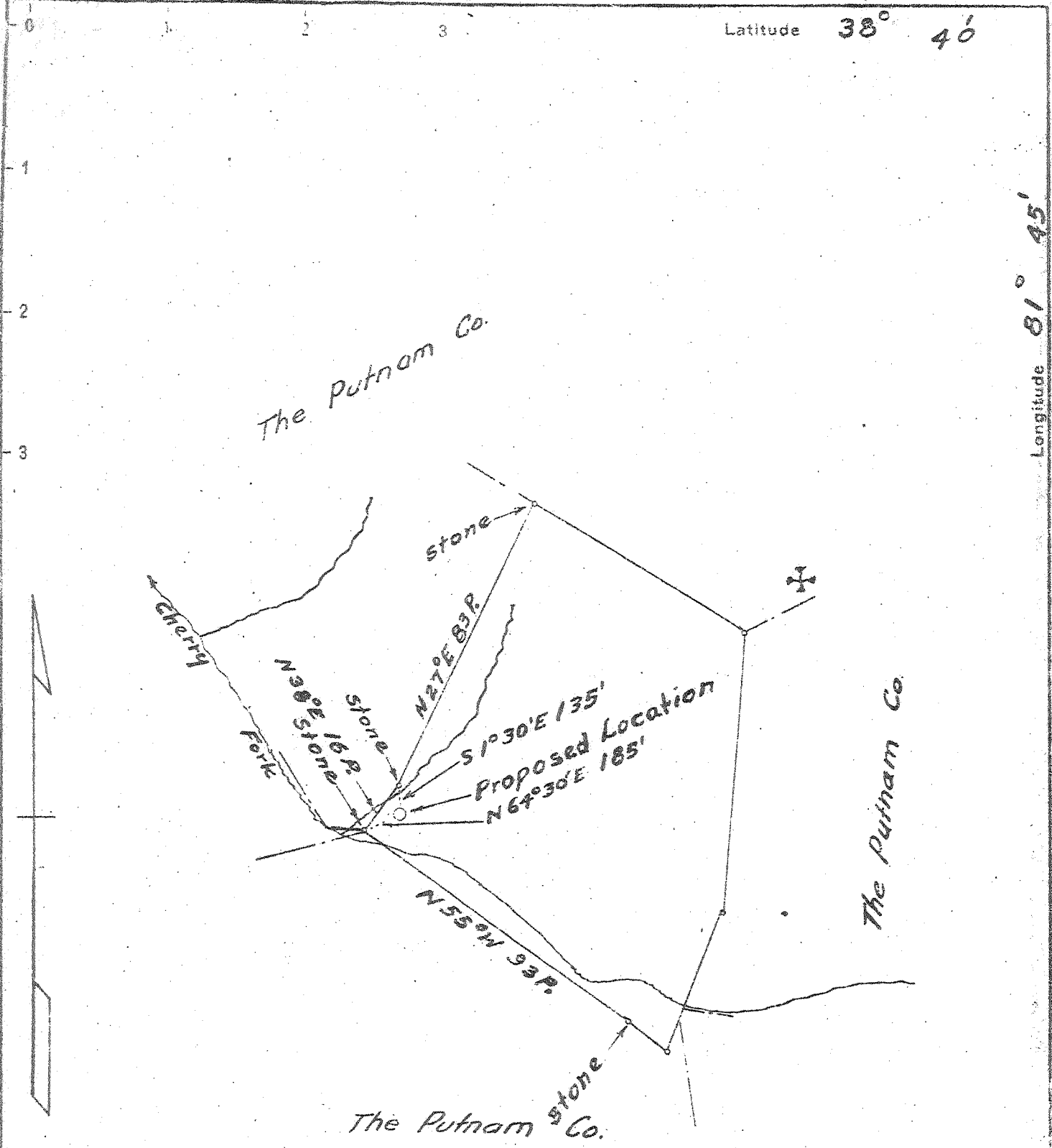


P

Latitude 38° 46'

Longitude 81° 45'



4.13 S.  
1.83 W.

65C (I-4)

New Location  X  
 Drill Deeper   
 Abandonment

Company Godfrey L. Cabot, Inc.  
 Address 900 Union Bldg. Charleston, W.Va.  
 Farm Putnam Co.  
 Tract \_\_\_\_\_ Acres 20000 Lease No. 3-464  
 Well (Farm) No. 43 Serial No. 1247  
 Elevation (Spirit Level) 674.0  
 Quadrangle Winfield - EC  
 County Putnam District Union  
 Engineer Roy Boster  
 Engineer's Registration No. \_\_\_\_\_  
 File No. \_\_\_\_\_ Drawing No. \_\_\_\_\_  
 Date 4-22-47 Scale 1" = 660'

STATE OF WEST VIRGINIA  
 DEPARTMENT OF MINES  
 OIL AND GAS DIVISION  
 CHARLESTON

**WELL LOCATION MAP**  
 FILE NO. PUT-368

+ Denotes location of well on United States Topographic Maps, scale 1 to 62,500, latitude and longitude lines being represented by border lines as shown.  
 - Denotes one inch spaces on border line of original tracing.

DeepWell

WEST VIRGINIA DEPARTMENT OF MINES  
OIL & GAS DIVISION  
W E L L R E C O R D

Permit No. Put 368  
Winfield Quad.  
Company  
Address  
Farm  
Location  
Well No.  
District  
Surface  
Mineral  
Commenced  
Completed  
Not shot  
Water

Godfrey L. Cabot, Inc.  
Charleston, W.Va.  
The Putnam Company    Acres  
43 serial 1247    Elev. 674  
Union    Putnam County

June 4, 1947  
Sept. 22, 1947

Dry Hole  
CASING & TUBING

13 3/8 48    250    Same \*  
10 1/2 32.75    847    Same \*\*  
8 5/8 24    1926    Same\*\*\*  
7    23    4707    Same\*\*\*\*

\* Half coupling casing shoe  
\*\* Shoe  
\*\*\* Packer  
\*\*\*\* Packer

40' 3 blrs. per hr.; 220 6 blrs. per hr.  
795 1 1/2 blrs. per hr.; 1495 H.F.

Sand	0	19	Slate	1890	1892
Red Rock	19	27	Sand	1892	1904
Sand	27	75	Slate	1904	1909
Slate	75	90	Sand	1909	1913
Sand	90	95	Slate	1913	1918
Red Rock	95	105	Lime	1918	1929
Sand	105	115	Slate & Shell	1929	2030
Red Rock	115	120	Lime	2030	2100
Slate	120	130	Slate & Shell	2100	2355
Sand	130	140	Brown Shale	2355	2343
Slate	140	160	Sand	2343	2361
Red Rock	160	170	Slate & Shell	2361	3560
Sand	170	180	Shale Br	3560	3620
Slate	180	215	Slate	3620	3790
Sand	215	225	Shale Br	3790	3900
Slate & Shell	225	265	Slate	3900	3965
Red Rock	265	280	Shale Br	3965	4060
Lime	280	287	Slate	4060	4415
Slate	287	330	Shale Br	4415	4425
Sand	330	368	Slate	4425	4475
Red Rock	368	395	Shale Br	4475	4632
Slate	395	405	Shale Blk	4632	4692
Red Rock	405	417	Worniferous Limo	4692	4805
Slate	417	469	Criskany	4805	4820
Sand	469	494	Lime Blk	4820	4829
Slate	494	498	Sand	4829	4836
Lime	498	518	Lime Blk	4836	4841
Red Rock	518	525	SLM 1980; 4707; 4809; 4820		
Slate & Shell	525	604	Gas 3825 show		
Red Rock	604	625	Gas 3980 show		
Slate	625	668	Gas 4430		
Sand	668	703	Gas 4537    21 MCF		
Slate	703	710			
Red Rock	710	720			
Slate	720	725			
Sandy Shell	725	745			
Slate	745	767			
Sand	767	820			
Gritty Limo	820	920			
Slate	920	950			
Gritty Limo	950	965			
Slate	965	970			
Sand	970	1000			
Slate	1000	1040			
Sand	1040	1064			
Slate & Shell	1064	1113			
Sand	1113	1170			
Slate	1170	1220			
Lime	1220	1260			
Slate & Shell	1250	1425			
Salt Sand	1425	1664			
Lime	1664	1672			
Slate	1672	1675			
Big Lime	1675	1840			
Slate	1840	1863			
Injun	1863	1890			

4692    4805  
674  
4018    4131

4836  
674  
4162