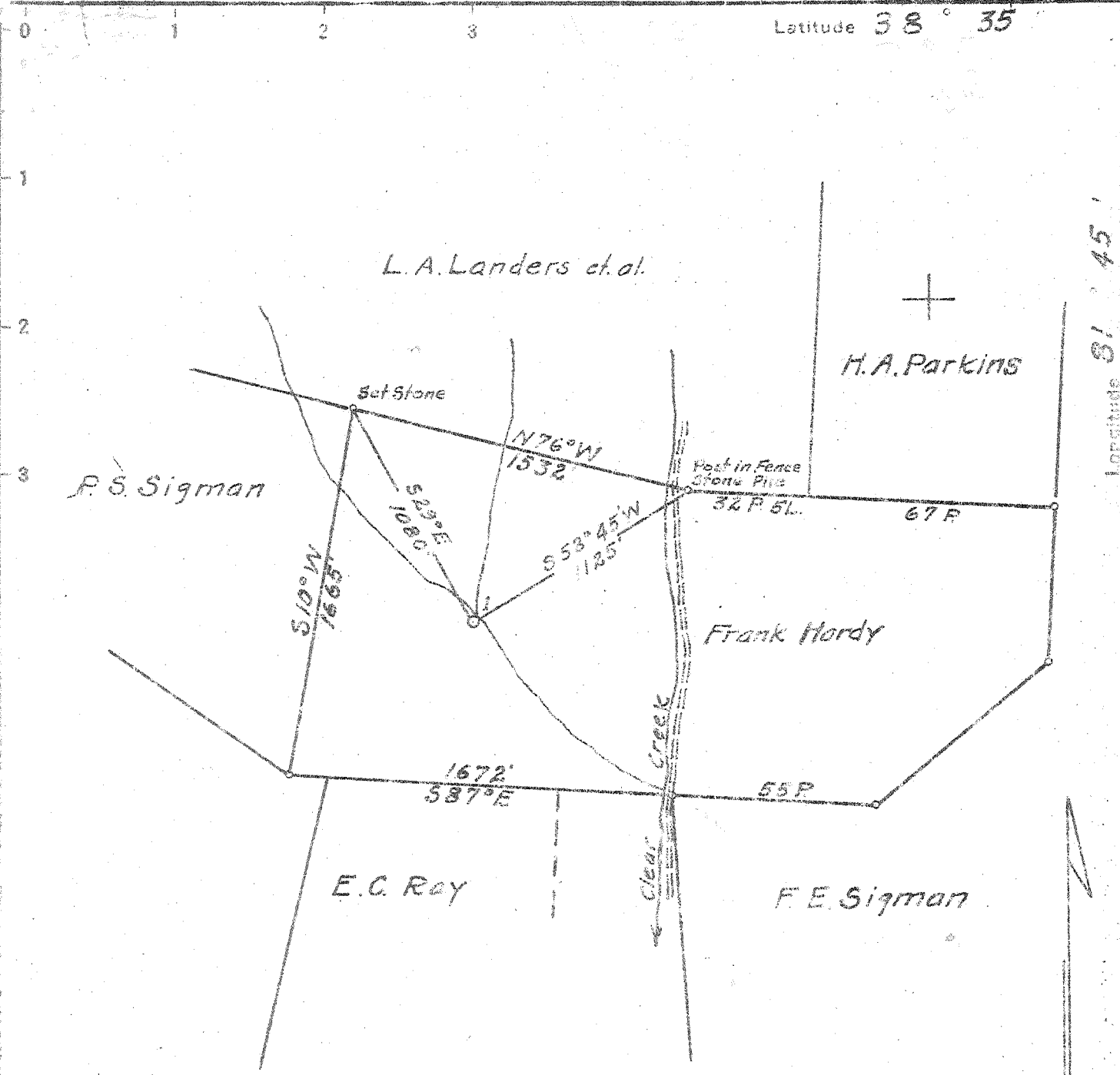


4 P



Surface: Jas. Withrow
 Pt. #1
 Foca,
 W. Va.

2,01 S.
 1.33 W.

New Location
 Drill Deeper
 Abandonment

560 W 65 7 EC (I-4)

Company	South Penn Oil Co.
Address	Parkersburg, W. Va.
Farm	Frank A. Hardy
Tract	Acres 5358.25 Lease No. AB-WF-155
Well (Farm) No.	Serial No.
Elevation (Spirit Level)	749.34 Ground
Quadrangle	Wierfield - SE
County	Putnam District Pocotalico
Engineer	Wm S. Hayes
Engineer's Registration No.	1429
File No.	Drawing No.
Date	7-25-49 Scale 1" = 660'

STATE OF WEST VIRGINIA
 DEPARTMENT OF MINES
 OIL AND GAS DIVISION
 CHARLESTON

WELL LOCATION MAP
 FILE NO. PUT-416

+ Denotes location of well on United States Topographic Maps, scale 1 to 52,500, latitude and longitude lines being represented by border lines as shown.

- Denotes one inch spaces on border line of original tracing.

Deep Well

WEST VIRGINIA DEPARTMENT OF MINES
OIL & GAS DIVISION
W E L L R E C O R D

Permit No. Put 416		Gas Well
Winfield Quad.		CASING & TUBING
Company	South Penn Oil Company	
Address	Parkersburg, W. Va.	16 20 20
Farm	Frank A. Hardy Acres 5,358.25	13 327 327
Location	Clear Crock	10 823 823
Well No.	1 Elev. 749.34	8 1/2 2001'6 2001'6
District	Pocatalico Putnam County	6 5/8 4763 4763
Surface	Jas. Withrow, Route #1, Poca, W. Va.	2 4883 4883
Mineral	Allen C. Kinnaman, Agent, P.O. Box 831 Charleston, W. Va.	
Commenced	Sept. 17, 1949	CASING CEMENTED:
Completed	Jan. 19, 1950	7" 25 sacks L-1-50
Date shot	Jan. 20, 1950	
Open flow	12/10ths M in 7" 20 #	Coal at 235-240'
Volume	5602 MCF (A.S.)	
Rock Pressure	1240 lbs. 47 hrs.	
Fresh Water	20-25' 3-16" blrs. per hr.	
	770' 2-10" blrs. per hr.	
Salt Water	1480' H.F.	

JUN 23 1951

Gravel	S		0	4	Gas 1802 1,087 MCF
Sandstone	Gr	H	4	24	Blow down to 36 MCF
Red Rock		M	24	95	
Sand	Gr	H	95	104	Gas 4840-4848 2,837 MCF SLM
Red Rock		S	104	150	
Slate	Gr	M	150	200	
Red Rock		M	200	225	NOTE: 8" casing was first run at
Sand	Gr	H	225	235	1,729' on a Hook Wall packer to test
Coal	Blk	S	235	240	Big Lime gas, packer failed and casing
Sand	Wh	H	240	262	was pulled and reset at 1,819' on an
Slate	Gr	M	262	320	Anchor Packer. After bailing the
Red Rock		S	320	392	hole dry, the gas was tested and blow
Lime	Wh	H	392	450	down to 36 MCF. Pipe was then pulled
Red Rock		M	450	460	and the hole drilled through the Big
Lime	Gr	H	460	480	Injun before resetting 8" again.
Sand	Gr	H	480	500	
Slate & Shells	Gr	M	500	530	
Red Rock		M	530	550	
Sand	Gr	H	550	574	
Red Rock		M	574	645	
Sand	Gr	H	645	745	
Slate	Gr	M	745	750	
Sand	Gr	H	750	785	
Slate	Gr	M	785	937	
Sand	Gr	H	937	1152	
Slate	Gr	M	1152	1410	
Lime	Gr	H	1410	1440	
Salt Sand	Gr	H	1440	1649	
Slate	Dk	M	1649	1651	
Lime	Gr	H	1651	1681	
Pencil Cave	Dk	S	1681	1703	
Big Lime	Gr	H	1703	1900	
Big Injun	Gr	M	1900	1975	
Lime	Bl	H	1975	2119	
Slate & Shells	Dk	M	2119	2343	
Brown Shale	Br	M	2343	2358	
Berea Grit	Gr	M	2358	2379	
Slate & Shells	Dk	M	2379	3648	
Brown Shale		M	3648	4116	
White Slate		M	4116	4437	
Brown Shale		M	4437	4730	
Black Shale	Blk	S	4730	4739	
Corniferous	Gr	H	4739	4832	
Oriskany	Gr	H	4832	4881	
Lime - Held	Gr	H	4881	4883	
T.D.				4883	SLM

(C) *[Handwritten Signature]*