



Well (Farin) No. 1 Serial No. 43
 Elevation (Spirit Level) 579.25
 Quadrangle WILDFIELD
 County PUTNAM District TEAS VALLEY
 Engineer JOHN GALPIN
 Engineer's Registration No. 215
 File No. _____ Drawing No. _____
 Date 10-3-49 Scale 1" = 500'

WELL LOCATION MAP
 FILE NO. PUB-424

+ Denotes location of well on United State
 Topographic Maps, scale 1 to 62,500, la-
 titude and longitude lines being represented
 by under lines, as shown.

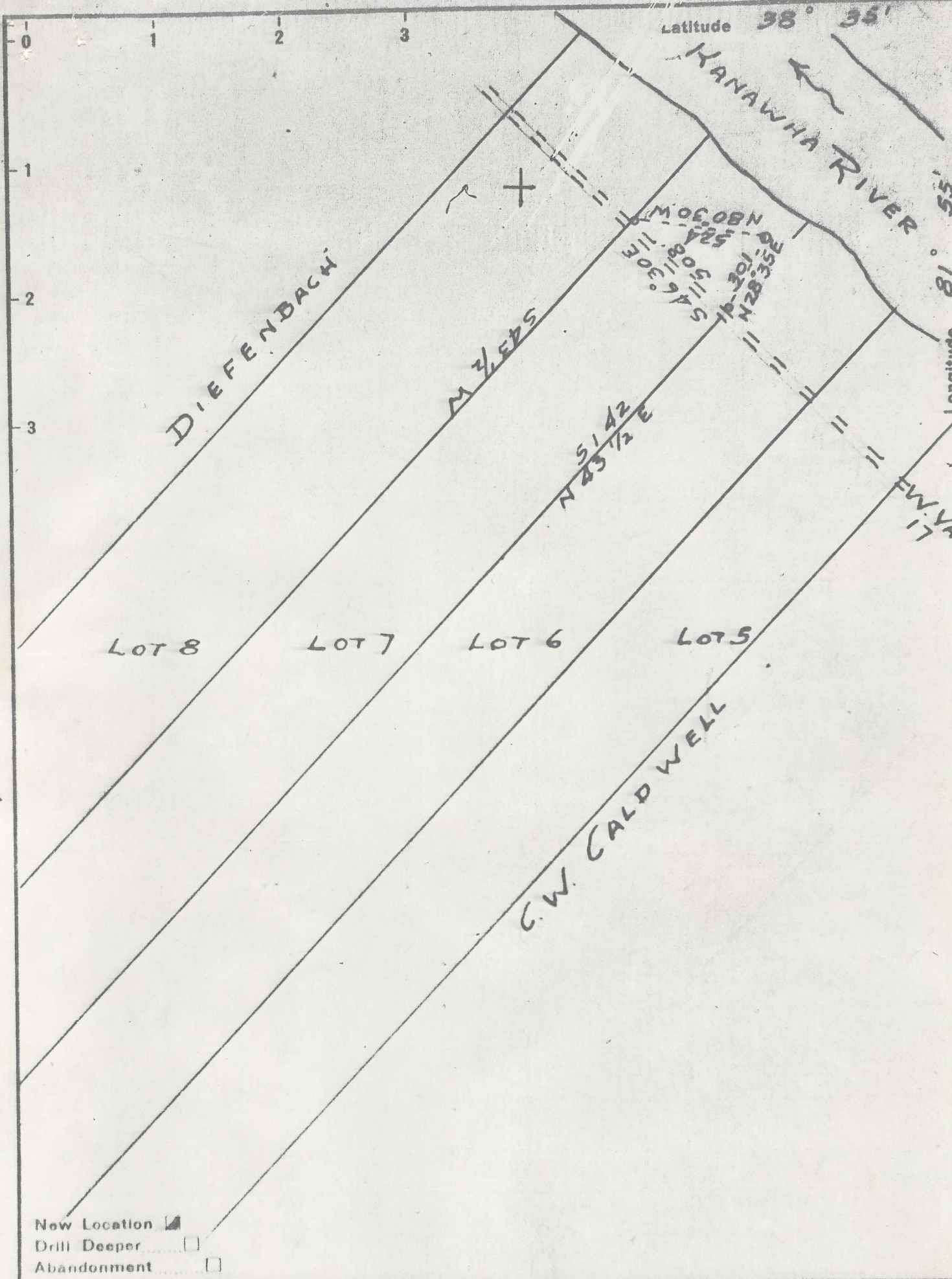
- Denotes one inch space. a border line
 of original tracing.

No driller's log filed ✓

C. M. CALDWELL NO. 1 WELL

Teays Valley District, Putnam Co., W. Va.
 By Teavee Oil and Gas Inc., Charleston, W. Va.
 Drilled under permit Put-424;
 On 304 acres on Kanawha River
 Elevation 579.38' L.
 Surface and minerals owned by C. M. Caldwell, Winfield, W. Va.
 Drilling commenced Oct. 8, 1949; completed Feb. 2, 1950.
 Well shot 2/3/50.
 Volume 328 Mcf.
 Water 60.75'; salt water 870'; 1735'.
 Coal encountered at 80'.
 Oil 1605'.
 Gas 3208'.
 Record: Casing 13", 59'; 10", 851' (pulled); 8 1/4", 1538' (pulled)
 2252' (left in).
 Record from V. C. Smith to RCT, Apr. 5, 1960

	Top.	Bottom.
Surface	0	50
Quick Sand	50	58
Sand and slat:	58	80
Red rock	80	810
Sand	810	910
Black slate	910	1000
Lime	1000	1100
Sand	1100	1120
Lime	1120	1360
Sand lime	1360	1459
Black slate	1459	1465
Limey	1465	1470
Red rock	1470	1505
Black slate	1505	1519
Little Lime	1519	1540
Big Lime	1540	1715
Slate and shells	1715	1731
Injun Sand	1731	1833
Slate and shells	1833	2218
Brown shale	2218	2224
Berea Sand	2224	2254
Slate and shells	2254	3350
Brown shale	3350	3355
White slate	3355	3365
Brown shale	3365	3373
White slate	3373	3400
Brown shale	3400	3420
White slate	3420	3480
Brown shale	3480	3545
Slate and shells	3545	3570
Brown shale	3570	3670
White Slate	3670	4002
Brown shale	4002	4135
Corniferous Lime	4135	4192
TOTAL DEPTH		4192



Company TEAVER OIL AND GAS INC.

Address CHARLESTON, W VA

Farm C. M. CALDWELL

Tract Acres 304 Lease No. _____

Well (Farm) No. 1 Serial No. 43

Elevation (Spirit Level) 579.28

Quadrangle WINEFIELD

County PUTNAM District TEARS VALLEY

Engineer JOHN GALPIN

Engineer's Registration No. 875

File No. _____ Drawing No. _____

Date 10-2-49 Scale 1" = 500'

STATE OF WEST VIRGINIA
DEPARTMENT OF MINES
OIL AND GAS DIVISION
CHARLESTON

WELL LOCATION MAP
FILE NO. Put-424

+ Denotes location of well on United States Topographic Maps, scale 1 to 62,500, latitude and longitude lines being represented by border lines as shown.

-- Denotes one inch spaces on border line of original tracing.

Neop

79

02/19/50

Latitude 38° 35'

HANAWHA RIVER

DIEFENBACH

M 3/4 E 7 S

S 1/4 2 N 43 1/2 E

M 06 08 N 88° 52' 30" W 118' 6" S 118° 35' 30" W 128' 35" S

LOT 8

LOT 7

LOT 6

LOT 5

C.W. CALDWELL

1' 3 25
3' 50

New Location
Drill Deeper
Abandonment

Company TEAVEE OIL AND GAS INC.
 Address CHARLESTON, W Va
 Farm C. M. CALDWELL
 Tract _____ Acres 304 Lease No. _____
 Well (Farm) No. 1 Serial No. 43
 Elevation (Spirit Level) 579.25
 Quadrangle WILDFIELD
 County PUTNAM District TRAYS VALLEY
 Engineer JOHN GALPIN
 Engineer's Registration No. 875
 File No. _____ Drawing No. _____
 Date 10-3-49 Scale 1" = 500'

STATE OF WEST VIRGINIA
DEPARTMENT OF MINES
OIL AND GAS DIVISION
CHARLESTON

WELL LOCATION MAP
FILE NO. Put-424

+ Denotes location of well on United States Topographic Maps, scale 1 to 62,500, latitude and longitude lines being represented by border lines as shown.

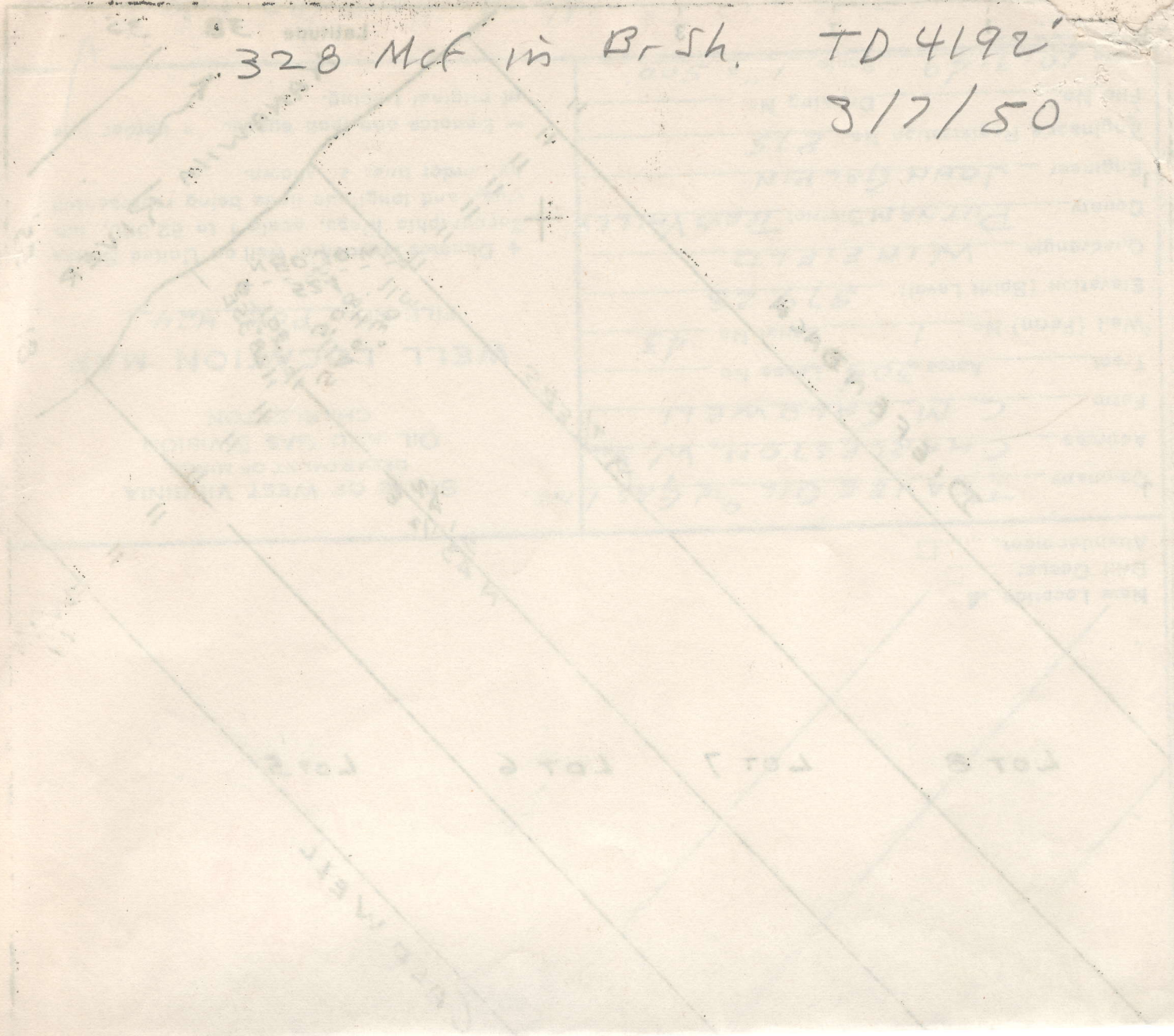
- Denotes one inch spaced border line of original tracing.

IMPERIAL TRACING CLOTH
K & L CO., N.Y.

6-9-278 No driller's log filed

328 McF in Br Sh. TD 4192'

3/7/50



C. M. CALDWELL NO. 1 WELL

Teays Valley District, Putnam Co., W. Va.
 By Teavee Oil and Gas Inc., Charleston, W. Va.
 Drilled under permit Put-424;
 On 304 acres on Kanawha River
 Elevation 579.38' L.
 Surface and minerals owned by C. M. Caldwell, Winfield, W. Va.
 Drilling commenced Oct. 8, 1949; completed Feb. 2, 1950.
 Well shot 2/3/50.
 Volume 328 Mcf.
 Water 60.75'; salt water 870'; 1735'.

- Coal encountered at 80'.

Oil 1605'

Gas 3208'

Record: Casing 13", 59'; 10", 851' (pulled); 8 1/4", 1538' (pulled); 6 5/8" 2252' (left in).

Record from V. C. Smith to RCT, Apr. 5, 1960

	Top.	Bottom.
Surface	0	50
Quick Sand	50	58
Sand and slate	58	80
Red rock	80	810
Sand	810	910
Black slate	910	1000
Lime	1000	1100
Sand	1100	1120
Lime	1120	1360
Sand lime	1360	1459
Black slate	1459	1465
Lime	1465	1470
Red rock	1470	1505
Black slate	1505	1519
Little Lime	1519	1540
Big Lime	1540	1715
Slate and shells	1715	1731
Injun Sand	1731	1833
Slate and shells	1833	2218
Brown shale	2218	2224
Berea Sand	2224	2254
Slate and shells	2254	3350
Brown shale	3350	3355
White slate	3355	3365
Brown shale	3365	3373
White slate	3373	3400
Brown shale	3400	3420
White slate	3420	3480
Brown shale	3480	3545
Slate and shells	3545	3570
Brown shale	3570	3670
White Slate	3670	4002
Brown shale	4002	4135
Corniferous Lime	4135	4192
TOTAL DEPTH		4192

Put 424



STATE OF WEST VIRGINIA
DEPARTMENT OF MINES
OIL AND GAS DIVISION

WELL RECORD

Oil or Gas Well Gas
(KIND)

Permit No. Put - 426

Company Teavee Oil & Gas, Inc.
Address Charleston, W. Va.
Farm C. M. Caldwell Acres 304
Location (waters) Kanawha River
Well No. 1 Elev. 579.28
District Teays Valley County Putnam
The surface of tract is owned in fee by C. M. Caldwell
Address Winfield
Mineral rights are owned by Same
Address _____
Drilling commenced 10-8-49
Drilling completed 2-2-50
Date Shot 2/3/50 From 3200' To 4192'
With 11,000# EL 407-A

Casing and Tubing	Used in Drilling	Left in Well	Packers
Size			Kind of Packer
16			
13	59'	59'	Bottom hole
10	851'		Size of
8 1/4	1538'		8-5/8 x 7 x 10
6 3/4	2252'	2252'	Depth set 2254
5 3/16			
3			Perf. top
2			Perf. bottom
Liners Used			Perf. top
			Perf. bottom

Open Flow 12/10ths Water in 3" 3 hr. A. S. Inch
/10ths Merc. in _____ Inch
Volume 328,000 Cu. Ft.
Rock Pressure _____ lbs. _____ hrs.
Oil _____ bbls., 1st 24 hrs.
Fresh water 60,751 feet _____ feet
Salt water 870,1735' feet _____ feet

CASING CEMENTED	SIZE	No. Ft.
COAL WAS ENCOUNTERED AT	FEET	INCH
	FEET	INCHES
	FEET	INCHES

Formation	Color	Hard or Soft	Top	Bottom	Oil, Gas or Water	Depth Found	Remarks
Surface			0	50			
Quick Sand			50	58			
Sand & Slate			58	80			Show water 60-75' (bailer per hr.)
Red Rock			80	810			Show coal 80'
Sand			810	910			Show water 870'
Slate	Black		910	1000			
Lime			1000	1100			
Sand			1100	1120			
Lime			1120	1360			
Sand Lime			1360	1459			
Black Slate			1459	1465			
Limey			1465	1470			
Rock	Red		1470	1505			
Slate	Black		1505	1519			
Little Lime			1519	1540			
Big Lime			1540	1715			Good show oil 1605'
Slate & Shells			1715	1731			
Injun Sand			1731	1833			
Slate & Shells			1833	2218			
Shale	Brown		2218	2224			
Berea Sand			2224	2254			
Slate & Shells			2254	3350			Show gas 3208'
Shale	Brown		3350	3355			
Slate	White		3355	3365			
Shale	Brown		3365	3373			
Slate	White		3373	3400			
Shale	Brown		3400	3420			
Slate	White		3420	3480			
Shale	Brown		3480	3545			
Slate & Shells			3545	3670			
Slate	White		3670	4002			
Shale	Brown		4002	4135			
Corniferous Lime			4135	4192			
TOTAL DEPTH				4192			

