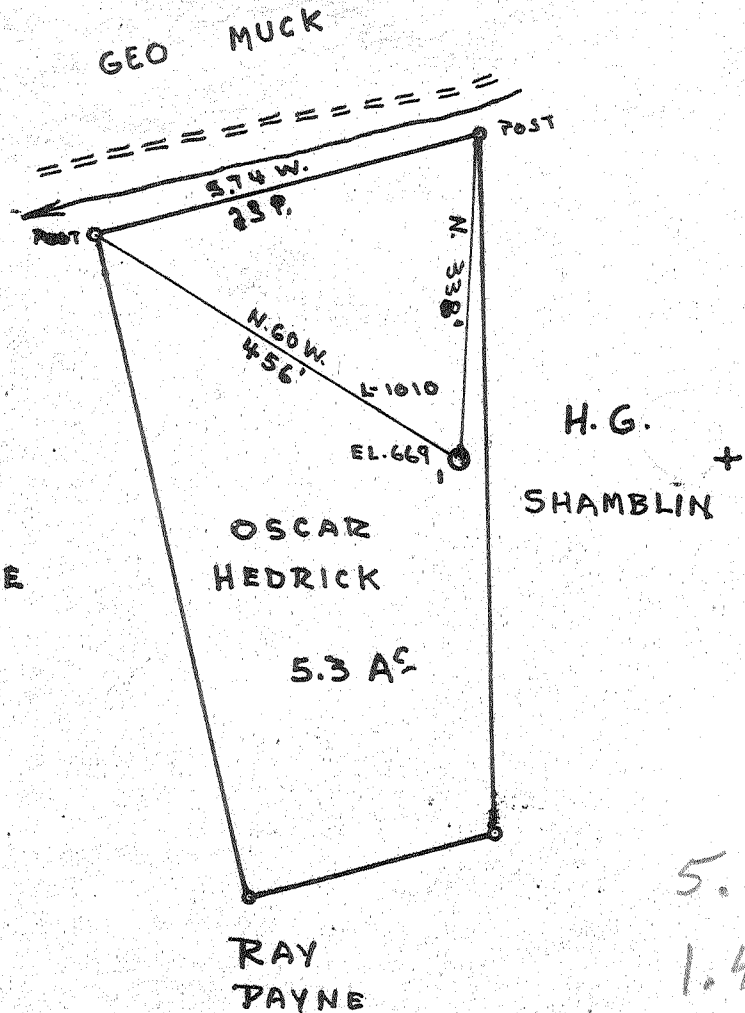


Latitude 38° 35'

Longitude 81° 45'



New Location
 Drill Deeper
 Abandonment

7 SE (I-4)

Company **HEIZER GAS Co.**
 Address **701-03 UNITED CARBON BLDG. CHARLESTON, W.V.A.**
 Farm **OSCAR HEDRICK ET AL. Consolidation**
 Tract _____ Acres **5.3** Lease No. **3-951**
 Well (Farm) No. **1** Serial No. **L-1010**
 Elevation (Spirit Level) **669**
 Quadrangle **WINFIELD - SE**
 County **PUTNAM** District **POCOTALICO**
 Engineer **Robert C. Egan**
 Engineer's Registration No. **1654**
 File No. **261** Drawing No. _____
 Date **AUG. 13 1953** Scale **1" = 200'**

STATE OF WEST VIRGINIA
 DEPARTMENT OF MINES
 OIL AND GAS DIVISION
 CHARLESTON

WELL LOCATION MAP
 FILE NO. **Put-551-0**

+ Denotes location of well on United States Topographic Maps, scale 1 to 62,500, latitude and longitude lines being represented by border lines as shown.
 - Denotes one inch spaces on border line of original tracing.

SAMPLES 29-H (4553-4661) ✓ Deep Well

STATE OF WEST VIRGINIA
DEPARTMENT OF MINES
OIL AND GAS DIVISION 3

Winfield

WELL RECORD

Oil or Gas Well Gas
(KIND)

Put-551

Heizer Gas Co.

701 United Carbon Bldg. Charleston, W. Va.

OSCAR HEDRICK at 81 Acres 5.3

Right Fork of Pocahontas River

Well #1 L-1010 Elev. 669

Putnam County Pocatalico

Oscar Hedrick
Pocahontas, W. Va.
RFD No. 1

Mineral rights are owned by
Address

9-23-53
2-17-54

Date shot 3-10-54 From 4655 To 4639

40 Quarts Nitro glycerin

Open Flow /100 ft. Water in Inch

440,000 Cu. Ft.

Rock Pressure 1200 lbs. 24 hrs.

Oil bbls., 1st 24 hrs.

Fresh water 115,455,890 feet

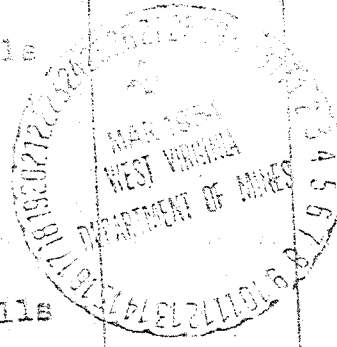
Salt water 1245,1305 feet

Casing and Tubing	Used in Drilling	Left in Well	Packers
Size			
16 wood	13'6"	13'6"	Kind of Packer
3/8	295'6"		
18 3/4	803	803	Size of
10 5/8	1858'7"	1858'7"	Depth set
7	4562	4562	
5 3/16			Perf. top
8		4640	Perf. bottom
2 3/8			Perf. top
Liners Used			Perf. bottom

CASING CEMENTED 2/17/54 SIZE 7 No. Ft. 4562 Date

COAL WAS ENCOUNTERED AT		FEET	INCHES
FEET	INCHES	FEET	INCHES
FEET	INCHES	FEET	INCHES

Formation	Color	Hard or Soft	Top	Bottom	Oil, Gas or Water	Depth Found	Remarks
Red Clay			0	12			
Sand	yellow		12	20			
Mud	Blue		20	25			
Red Rock			25	110	Water	115	14 Bail-ers per hr.
Sand			110	120			
Red Rock			120	138			
Sand			138	163			
Red Rock			163	235			
Sand			235	280			
Red Rock			280	308			
Sand			308	320			
Slate			320	332			
Red Rock			332	350			
Slate			350	390	Water	455	1 Bail-er 3 hours.
Red Rock			390	463			
Slate			463	531			
Sand			531	543			
Slate			543	625			
Sand			625	650			
Slate & Shells			650	655			
Lime			655	706			
Slate			706	756			
Sand			756	758			
Coal			758	765			
Sand			765	768			
Slate			768	792			
Sand			792	886	Water	890	2 Bailers 3 hours.
Slate & Shells			886	910			
Sand			910	985			
Slate & Shells			985	1060			
Sand			1060	1085			
Slate & Shells			1085	1122	Water	1245	Hole Full
Sand			1122	1198	Water	1305	
Slate & Shells			1198	1466			
SALT SAND			1466	1468			
Slate			1468	1491			
Lime Shell			1491	1493			
Slate			1493	1518			
Sand			1518	1523			
Slate							



Formation	Color				Oil, Gas or Water	Depth Found	
Little Lime			1523	1546			
Pencil Cave			1546	1548			
BIG LIME			1548	1706			
Slate			1706	1709			
Lime			1709	1728			
Big Injun Sand			1728	1770	Oil	1730-40	Show
Slate & Shells			1770	1780			
Lime Shell			1780	1926			
Slate & Shells			1926	2188			
Coffee Shale			2188	2204			
BUREA SAND			2204	2219			
Slate & Shells			2219	3400	Gas	2920'	Show
Gray Shale			3400	3445			
Slate & Shells			3445	3740			
Brown Shale			3740	3755			
Lime Shell			3755	3795			
Brown Shale			3795	3910			
White Slate			3910	3950			
Slate & Shells			3950	4375			
Brown Shale			4375	4545	DLM		
CORNIFEROUS LIME			4538SIM	4636			
ORISKANY SAND			4636	4661	Gas	4640-51	327MCF
T.D.				4661			

4538	4636
669	669
<u>3869</u>	<u>3967</u>

Date March 26 1954

APPROVED Heiter Gas Co.
 By Robert C. Lafferty
 Robert C. Lafferty