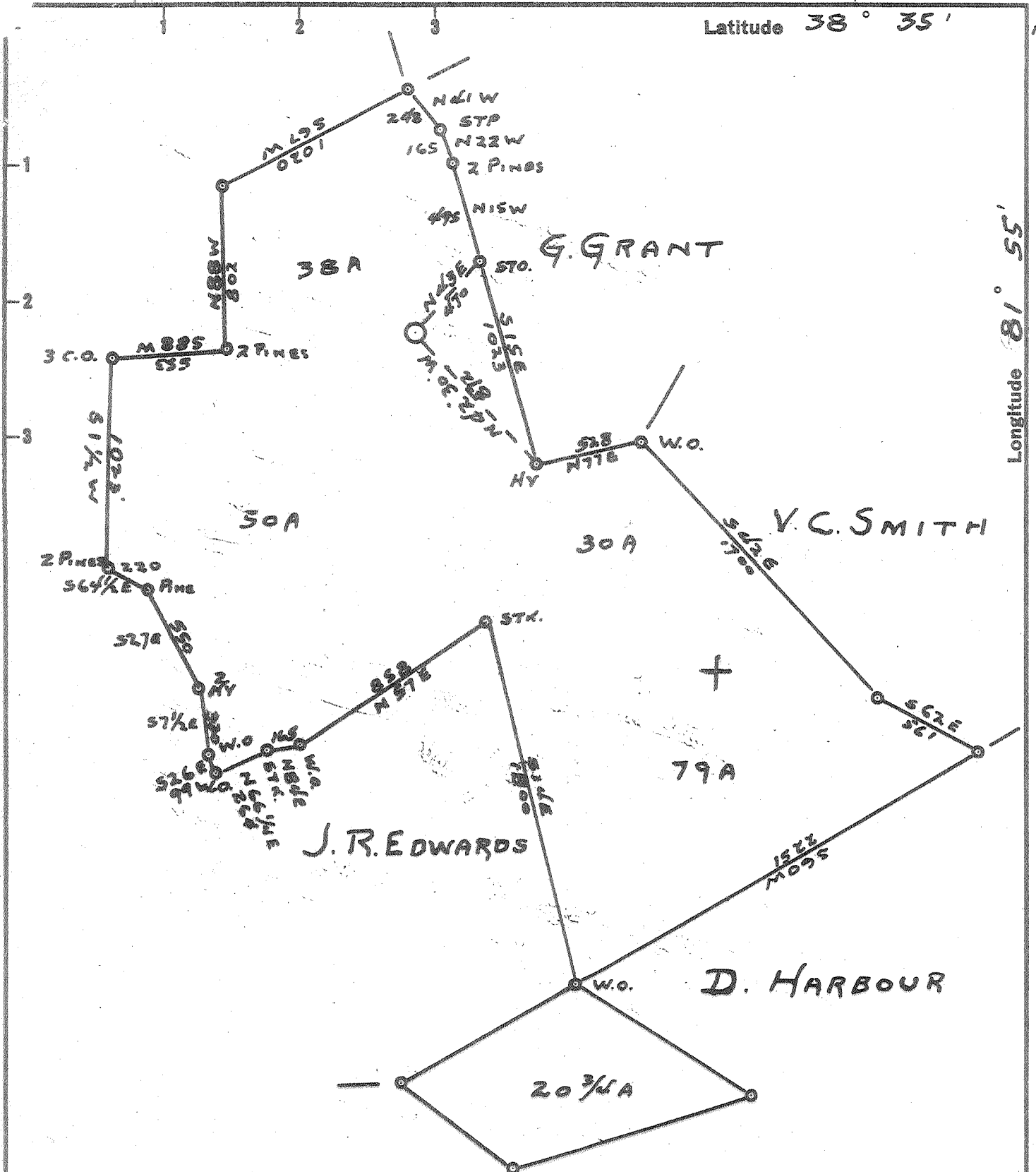


Latitude 38° 35'

Longitude 81° 55'



4.92 S.  
2.27 W.

9 SC (I-4)

- New Location ..
- Drill Deeper .....
- Abandonment .....

Company TRAVEL OIL & GAS  
 Address CHARLESTON, WVA  
 Farm NORA CALL  
 Tract \_\_\_\_\_ Acres 2.18 Lease No. \_\_\_\_\_  
 Well (Farm) No. 1 Serial No. TV68  
 Elevation (Spirit Level) 737  
 Quadrangle WINFIELD - SW.  
 County PUTNAM District SCOTT  
 Engineer JOHN GALPIN  
 Engineer's Registration No. 875  
 File No. \_\_\_\_\_ Drawing No. \_\_\_\_\_  
 Date 10-26-59 Scale 1" = 660'

STATE OF WEST VIRGINIA  
 DEPARTMENT OF MINES  
 OIL AND GAS DIVISION  
 CHARLESTON

WELL LOCATION MAP  
 FILE NO. Put-669

+ Denotes location of well on United States Topographic Maps, scale 1 to 62,500, latitude and longitude lines being represented by border lines as shown.

- Denotes one inch spaces on border line of original tracing.

No. Samples 6-6-59 Deep Well



STATE OF WEST VIRGINIA  
DEPARTMENT OF MINES  
OIL AND GAS DIVISION

Quadrangle Winfield

Permit No. Put. 669

**WELL RECORD**

Oil or Gas Well Gas

Company Teavee Oil & Gas Co.  
Address Charleston, West Va.  
Farm Nora Call Acres 217 3/4  
Location (waters) Black Lick  
Well No. 1 Elev. 737  
District Scott County Putnam  
The surface of tract is owned in fee by Nora Call  
Address Winfield, W.Va.  
Mineral rights are owned by (Same)  
Address \_\_\_\_\_  
Drilling commenced October 28, 1959  
Drilling completed February 17, 1960  
Date Shot (not shot) From \_\_\_\_\_ To \_\_\_\_\_  
With \_\_\_\_\_  
Open Flow 22 /10ths Water in One Inch  
\_\_\_\_\_/10ths Merc. in \_\_\_\_\_ Inch  
Volume 55,000 Cu. Ft.  
Rock Pressure Not taken lbs. \_\_\_\_\_ hrs.  
Oil \_\_\_\_\_ bbls., 1st 24 hrs.  
WELL ACIDIZED \_\_\_\_\_  
WELL FRACTURED \_\_\_\_\_

Casing and Tubing	Used in Drilling	Left in Well	Packers
Size			Kind of Packer <u>Anchor</u>
16			
13	<u>34</u>	<u>34</u>	
10	<u>327</u>	<u>Pulled</u>	Size of <u>2 X 7</u>
<u>8 5/8</u>	<u>1279</u>	<u>Pulled</u>	
<u>6 5/8</u>	<u>1996</u>	<u>17"</u>	Depth set <u>4518</u>
<u>5 3/16</u>			
<u>3</u>			Perf. top <u>4541</u>
<u>2</u>		<u>4563</u>	Perf. bottom <u>4563</u>
Liners Used			Perf. top _____
			Perf. bottom _____

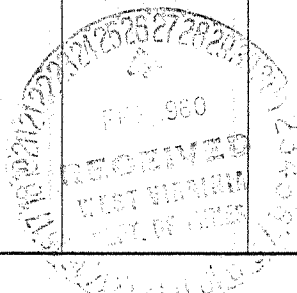
CASING CEMENTED None SIZE \_\_\_\_\_ No. Ft. \_\_\_\_\_ Date \_\_\_\_\_  
COAL WAS ENCOUNTERED AT None FEET \_\_\_\_\_ INCHES  
\_\_\_\_ FEET \_\_\_\_\_ INCHES FEET \_\_\_\_\_ INCHES  
\_\_\_\_ FEET \_\_\_\_\_ INCHES FEET \_\_\_\_\_ INCHES

RESULT AFTER TREATMENT

ROCK PRESSURE AFTER TREATMENT

Fresh Water 40 Feet 105 Salt Water 850 Feet 1330

Formation	Color	Hard or Soft	Top	Bottom	Oil, Gas or Water	Depth	Remarks
Clay	0	5					
Blue Rock	5	20					
Sand Stone	20	40					
Slate	40	51					Hole full water 40ft.
Red Rock	51	70					
Slate	70	90					
Sand	90	120					Hole full water at 105ft.
Slate	120	212					
Red Rock	212	218					
Slate	218	250					
R.Rock	250	310					
Blue Rock	310	337					
Sand	337	357					
Slate	367	387					
R.Rock	387	420					
Slate	420	467					
R.Rock	467	530					
Slate	530	826					
Sand	826	952					Salt water 850 hole full
Slate	952	1086					
Sand	1086	1130					
Slate	1130	1161					
Sand	1161	1190					
Black Slate	1190	1225					
Sand	1225	1285					



(over)

Formation	Color	Hard or Soft	Top 7	Bottom	Oil, Gas or Water	Depth Found	Remarks
Black Slate	1285	1300					
Salt Sand	1300	1390					Hole full water
Black Slate	1390	1400					1330
Salt Sand	1400	1633					
Little Lime	1633	1656					
Pencil Cave	1656	1658					
Big Lime	1658	1819					
Injun Sand	1819	1871					
Slate	1871	1897					
Sand	1897	1935					
Weir Shells	1935	2189	4440	4540	4555		
Slater&Shells	2189	2358	737				Gas show 2059'
Coffee Shale	2358	2374					show 3755'
Bered Grit	2374	2412					show 3855'
Slate&Shells	2412	2607	3703	3803	3818		show 4540'
Black Lime	2607	2637					
Slate&Shells	2637	3550					
Brown Shale	3550	3945					
White Slate	3945	4250					
Marc	4250	4440					
Cornif. Lime	4440	4540					
Oriskany	4540	4555					
Cilme	4555						
T.D.	4563						
						Total Depth	4563
						Gas 12/10	1 in. water

DATE RECORDED Date 7/25, 1960

APPROVED James Dill Beas, Owner

By James Dill Beas (Title)