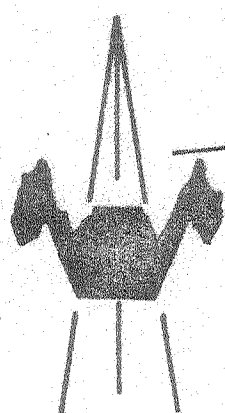
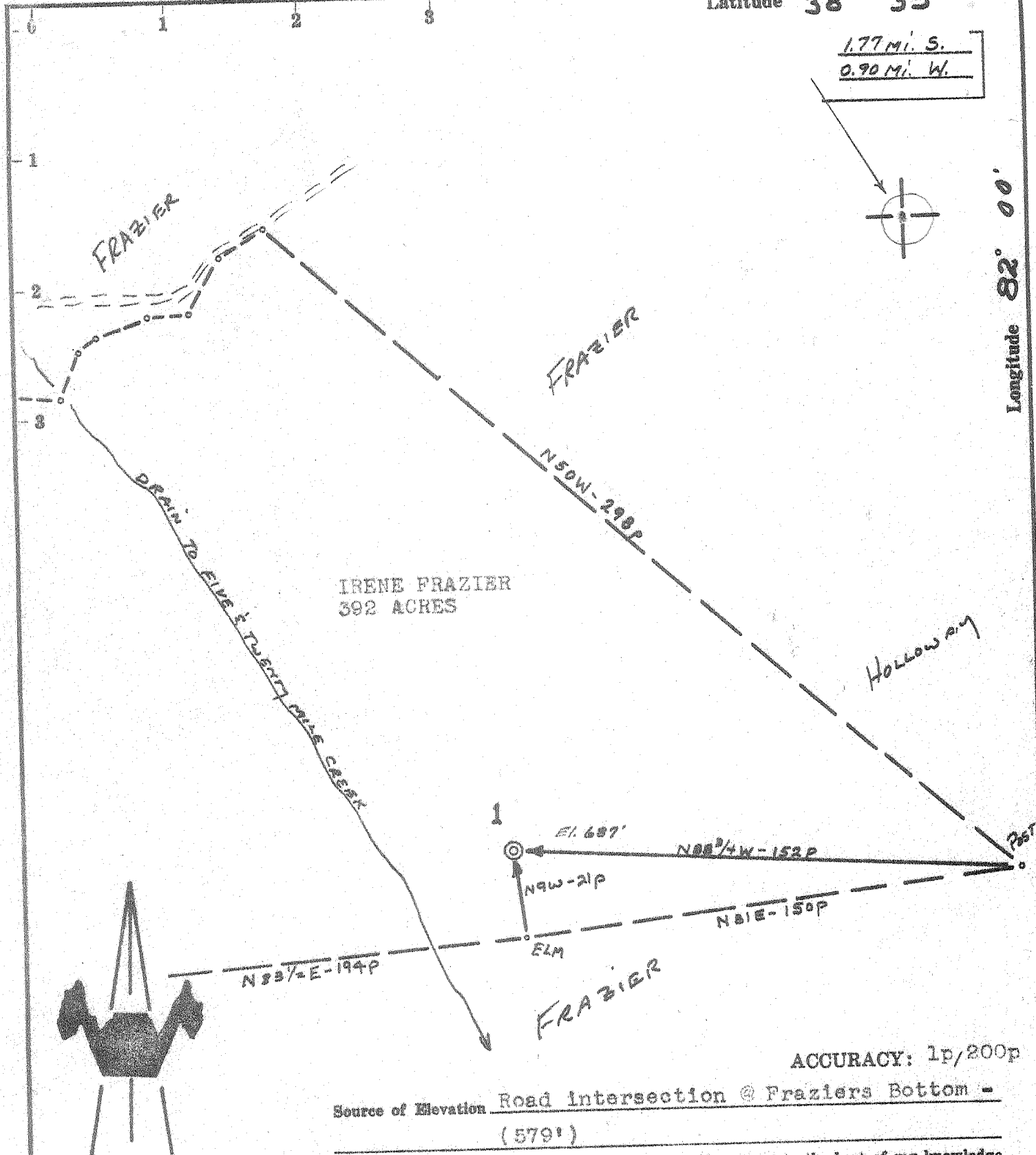


Latitude **38° 35'**

1.77 Mi. S.  
0.90 Mi. W.

Longitude **82° 00'**



ACCURACY: 1p/200p

Source of Elevation Road Intersection @ Frazier's Bottom -  
(579')

I, the undersigned, hereby certify that this map is correct to the best of my knowledge and belief and shows all the information required by paragraph 6 of the rules and regulations of the oil and gas section of the mining laws of West Virginia.

*Chet Waterman*

- New Location
- Drill Deeper
- Abandonment
- Fracture
- Redrill

|                             |                              |
|-----------------------------|------------------------------|
| Company                     | MARVEE OIL CORPORATION       |
| Address                     | SPENCER, W. VA.              |
| Farm                        | IRENE FRAZIER                |
| Tract                       | Acres 392 Lease No.          |
| Well (Farm) No.             | 1 Serial No.                 |
| Elevation (Spirit Level)    | 687'                         |
| Quadrangle                  | GLINWOOD                     |
| County                      | POTNAM District YEAYS VALLEY |
| Engineer                    | CHET WATERMAN                |
| Engineer's Registration No. | 3788                         |
| File No.                    | 67003-214 Drawing No.        |
| Date                        | 11/10/67 Scale 1" = 40p      |

STATE OF WEST VIRGINIA  
DEPARTMENT OF MINES  
OIL AND GAS DIVISION  
CHARLESTON

**WELL LOCATION MAP**  
FILE NO. PUT - 737-P

+ Denotes location of well on United States Topographic Maps, scale 1 to 62,500, latitude and longitude lines being represented by border lines as shown.

— Denotes one inch spaces on border line of original tracing.



STATE OF WEST VIRGINIA  
DEPARTMENT OF MINES  
OIL AND GAS DIVISION

Rotary   
Spudder   
Cable Tools   
Storage

Quadrangle Glenwood  
Permit No. PUT-737

WELL RECORD

Oil or Gas Well Dry  
(KIND)

Company Mareve Oil Corp.  
Address P.O. Box 471, Spencer, W. Va.  
Farm I. Frazier Acres 392  
Location (waters) Five Mile Creek  
Well No. 1 Elev. 687  
District Teays Valley County Putnam  
The surface of tract is owned in fee by I. Frazier c/o R. Holloway Address Fraziers Bottom  
Mineral rights are owned by I. Frazier c/o R. Holloway Address Fraziers Bottom  
Drilling commenced 11-18-67  
Drilling completed 12-5-67  
Date Shot From To

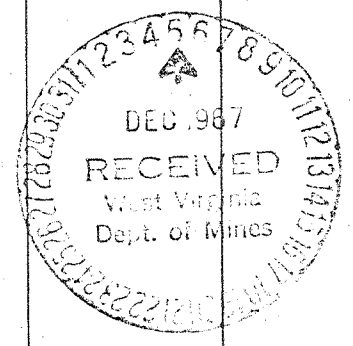
| Casing and Tubing | Used in Drilling | Left in Well | Packers        |
|-------------------|------------------|--------------|----------------|
| Size              |                  |              | Kind of Packer |
| 16                |                  |              |                |
| 13 3/8            | 30               | 30           |                |
| 10                |                  |              | Size of        |
| 8 1/4             |                  |              |                |
| 6 3/4             |                  |              | Depth set      |
| 5 3/16            |                  |              |                |
| 4 1/2             |                  |              | Perf. top      |
| 3                 |                  |              | Perf. bottom   |
| 2                 |                  |              | Perf. top      |
| Liners Used       |                  |              | Perf. bottom   |

With  
Open Flow /10ths Water in Inch  
/10ths Merc. in Inch  
Volume 1 MCF @ (4275) Cu. Ft.  
Rock Pressure 0 lbs. hrs.  
Oil None bbls., 1st 24 hrs.  
WELL ACIDIZED (DETAILS) No-P & A  
WELL FRACTURED (DETAILS) No-P & A

Attach copy of cementing record.  
CASING CEMENTED 85/8 SIZE 2328 No. Ft. 11/27/67 Date  
Amount of cement used (bags) 470  
Name of Service Co. Howco  
COAL WAS ENCOUNTERED AT FEET INCHES  
FEET INCHES FEET INCHES  
FEET INCHES FEET INCHES

RESULT AFTER TREATMENT (Initial open Flow or bbls.)  
ROCK PRESSURE AFTER TREATMENT HOURS  
Fresh Water Feet Salt Water Feet  
Producing Sand Dry Depth

| Formation   | Color | Hard or Soft | Top  | Bottom | Oil, Gas or Water | Depth                     | Remarks |
|-------------|-------|--------------|------|--------|-------------------|---------------------------|---------|
| Surface     |       |              | 0    | 70     |                   |                           |         |
| Sand        |       |              | 70   | 90     |                   |                           |         |
| Lime        |       |              | 90   | 120    |                   |                           |         |
| Red Rock    |       |              | 120  | 275    |                   |                           |         |
| Shale       |       |              | 275  | 410    |                   |                           |         |
| Sandy Shale |       |              | 410  | 760    |                   |                           |         |
| Red Rock    |       |              | 760  | 810    |                   |                           |         |
| Shale       |       |              | 810  | 948    |                   |                           |         |
| Sand        |       |              | 948  | 958    |                   |                           |         |
| Shale       |       |              | 958  | 972    |                   |                           |         |
| Sand        |       |              | 972  | 1042   |                   |                           |         |
| Shale       |       |              | 1042 | 1052   |                   |                           |         |
| Shale       |       |              | 1052 | 1070   |                   |                           |         |
| Sand        |       |              | 1070 | 1119   |                   |                           |         |
| Shale       |       |              | 1119 | 1128   |                   |                           |         |
| Sand        |       |              | 1128 | 1155   | Show of water     | at 1128'                  |         |
| Shale       |       |              | 1155 | 1231   |                   |                           |         |
| Sand        |       |              | 1231 | 1281   |                   |                           |         |
| Shale       |       |              | 1281 | 1471   |                   |                           |         |
| Salt Sand   |       |              | 1471 | 1510   | Water at 1471'    | to within 500' at surface |         |
| Shale       |       |              | 1510 | 1522   |                   |                           |         |
| Salt Sand   |       |              | 1522 | 1533   |                   |                           |         |
| Shale       |       |              | 1533 | 1572   |                   |                           |         |
| Salt Sand   |       |              | 1572 | 1655   |                   |                           |         |
| Shale       |       |              | 1655 | 1663   |                   |                           |         |
| Salt Sand   |       |              | 1663 | 1719   |                   |                           |         |
| Lime        |       |              | 1719 | 1808   |                   |                           |         |
| Shale       |       |              | 1808 | 1834   |                   |                           |         |



| Formation            | Color | Hard or Soft | Top  | Bottom     | Oil, Gas or Water | Depth Found | Remarks |
|----------------------|-------|--------------|------|------------|-------------------|-------------|---------|
| Shale                |       |              | 1806 | 1806       |                   |             |         |
| Shale                |       |              | 1806 | 2010       |                   |             |         |
| Shale                |       |              | 2010 | 2070       |                   |             |         |
| Shale                |       |              | 2070 | 2281       |                   |             |         |
| Shale                |       |              | 2281 | 2290       |                   |             |         |
| Shale                |       |              | 2290 | 2400       |                   |             |         |
| Shale                |       |              | 2400 | 2540       |                   |             |         |
| Shale w/line streaks |       |              | 2540 | 2600       |                   |             |         |
| Shale w/line streaks |       |              | 2600 | 2690       |                   |             |         |
| Shale w/line streaks |       |              | 2690 | 4075       |                   |             |         |
| Shale w/line streaks |       |              | 4075 | 4010       |                   |             |         |
| Shale w/line streaks |       |              | 4010 | 4010       | Show of gas at    | 4075/ROF/W  |         |
| Shale w/line streaks |       |              | 4010 | 4310       |                   |             |         |
| Shale w/line streaks |       |              | 4310 | 4333       |                   |             |         |
| Shale w/line streaks |       |              | 4333 | 4348       |                   |             |         |
| Shale w/line streaks |       |              | 4348 | 5138       |                   |             |         |
| Shale w/line streaks |       |              | 5138 | 5140       |                   |             |         |
| Shale w/line streaks |       |              | 5140 | 5298       |                   |             |         |
| Shale w/line streaks |       |              | 5298 | 5346       |                   |             |         |
| Shale w/line streaks |       |              | 5346 | 5610 (7.0) |                   |             |         |

Date December 5, 1967

APPROVED MEREVE OIL CORP. Owner

By J. R. Hickox (I. N. Hickox)  
(Title)