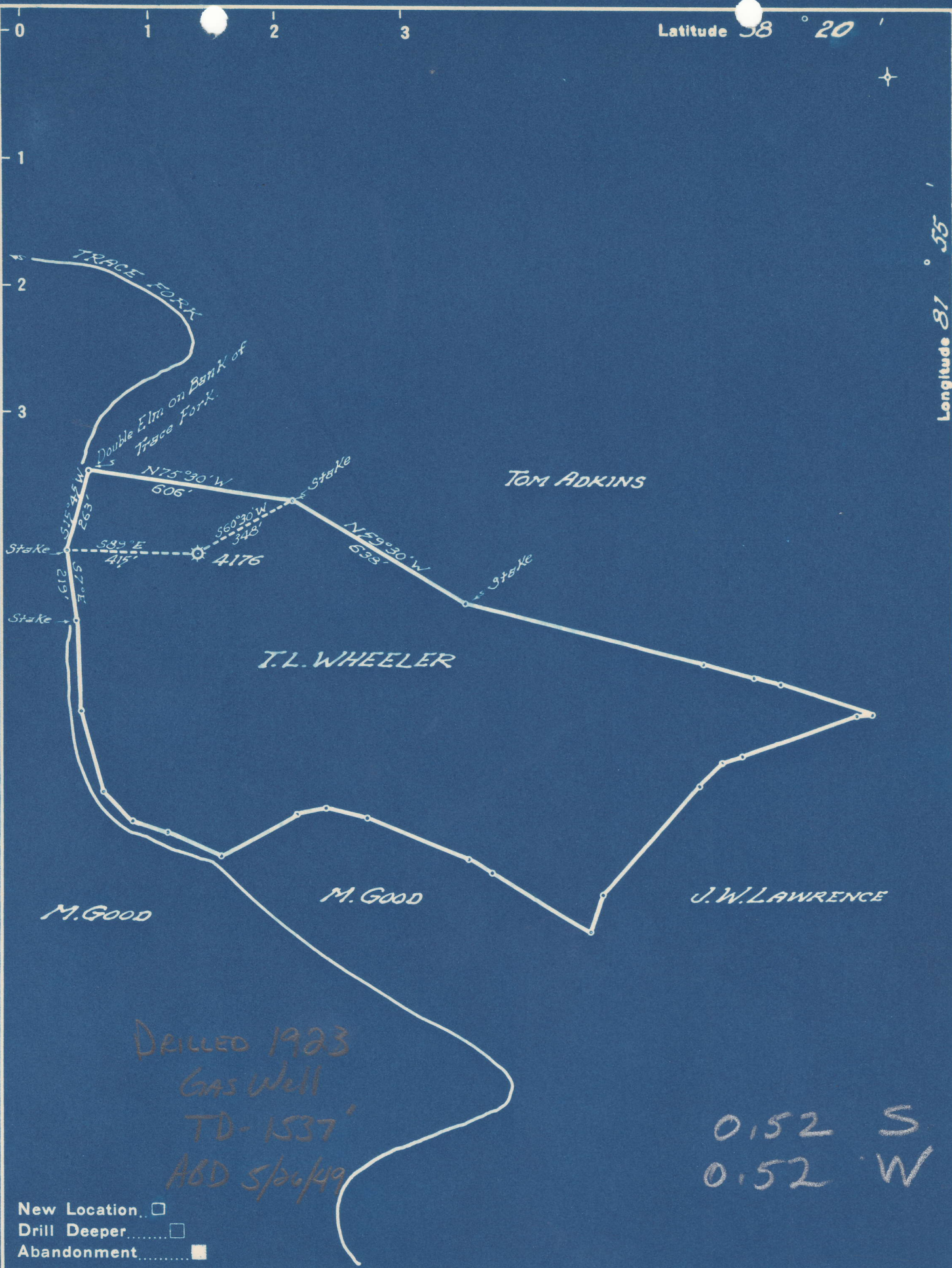


Latitude 38° 20'

Longitude 81° 35'



Drilled 1923
 Gas Well
 TD-1537'
 AGD 5/26/49

0.52 S
 0.52 W

New Location
 Drill Deeper
 Abandonment

Company UNITED FUEL GAS CO.
 Address CHARLESTON, W.VA.
 Farm T.L. WHEELER
 Tract _____ Acres 47 1/4 Lease No. 30386
 Well (Farm) No. _____ Serial No. 4176
 Elevation (Spirit Level) 681.2
 Quadrangle SAINT ALBANS
 County PUTMAN District CURRY
 Engineer [Signature]
 Engineer's Registration No. 662
 File No. 44-46-57 Drawing No. _____
 Date 1-10-49 Scale 1"=400'

STATE OF WEST VIRGINIA
 DEPARTMENT OF MINES
 OIL AND GAS DIVISION
 CHARLESTON

WELL LOCATION MAP
 FILE NO. PUT-83-A

+ Denotes location of well on United States Topographic Maps, scale 1 to 62,500, latitude and longitude lines being represented by border lines as shown.
 - Denotes one inch spaces on border line of original tracing.

"IMPERIAL" TRACING CLOTH
 K & E CO., N. Y.

Burdett-St. Albans (211)