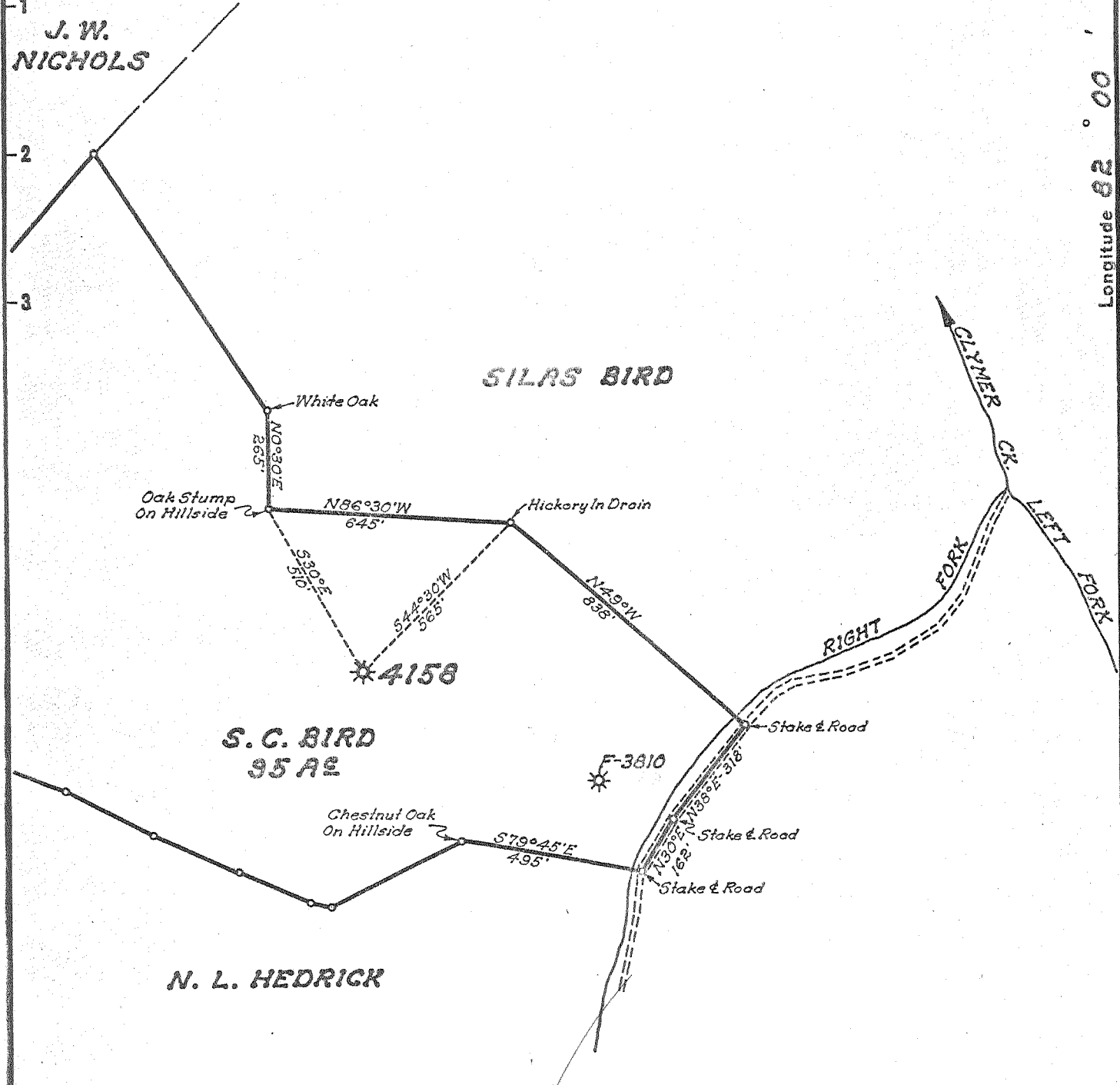


Latitude 8° 20'

Longitude 82° 00'



New Location
 Drill Deeper
 Abandonment

MAY 31 1955

oil W
oil Q

Company UNITED FUEL GAS CO.
 Address CHARLESTON, W. VA.
 Farm S. C. BIRD (HENRY LAWSON - SUR.)
 Tract _____ Acres 35 Lease No. 30419
 Well (Farm) No. _____ Serial No. 4158
 Elevation (Spirit Level) 698.0
 Quadrangle MILTON
 County POTNAM District CURRY
 Engineer Robert R. Rull
 Engineer's Registration No. 2529
 File No. 40-57 Drawing No. _____
 Date 4-27-55 Scale 1"=400'

STATE OF WEST VIRGINIA
 DEPARTMENT OF MINES
 OIL AND GAS DIVISION
 CHARLESTON

WELL LOCATION MAP
 FILE NO. PUT-98-A

+ Denotes location of well on United States Topographic Maps, scale 1 to 62,500, latitude and longitude lines being represented by border lines as shown.
 - Denotes one inch spaces on border line of original tracing.

S.C. BIRD (HENRY LAWSON) No. 4158 - U. F. G. Co. - 6-6 Burdett - St. Albans (211) PUT-98A

